



Sayt-K'il'im-Goot – One Heart, One Path, One Nation

2014 NASS RIVER SALMON STOCK ASSESSMENT UPDATE – THURSDAY, 7 AUGUST

The following update is the seventh general public Nass River salmon and summer-run steelhead stock assessment update for 2014 from the Nisga'a Fisheries and Wildlife Department of Nisga'a Lisims Government.

All data presented in this update are preliminary and subject to change with further assessment information that becomes available and should be interpreted cautiously. For in-season assessment purposes only.

NASS RIVER ASSESSMENT OPERATIONS UPDATE

OPERATIONAL ASSESSMENT INFORMATION FOR 2014

Fishwheel Assessment data: 1 June – 6 August

Meziadin Fishway data: 1 July – 6 August

Kwinageese Weir data: 10 July – 6 August

GITWINKSIHLKW (GW) FISHWHEELS (NASS TEST FISHERY –STARTED IN 1994 [21st year]):

The Nass River test fishery fishwheels began operation on 1 June (FW1 and FW2) for tagging and historical catch index assessments for salmon and summer-run steelhead. All fish caught in the GW fishwheels are released alive after tagging and/or counting. Fishwheels 1 and 2 have been operating at below average water levels since 6 July and are currently at the lowest water levels since the operations started in 1994. The Nass River water level is currently 0.7 m lower than the 1994-2013 average (1.3 m vs. 2.0 m). Both fishwheels have been fishing at their alternate (low water) fishing sites since 25 July. A chart of the water levels at the test fishery follows the text summary that compares current levels to historical levels. The Nass River water temperature is currently 0.2°C higher than the 1994-2013 average (10.5°C vs. 10.3°C).

GREASE HARBOUR (GH) FISHWHEELS:

Start-up dates of the GH fishwheels were 8 June (FW3, FW5, and FW6) and 1 July (FW4). Four fishwheels are currently operating at Grease Harbour (upstream of Ts'im Anwiihlist). Fishwheel 4 was re-started on 5 August after being shut down since 23 July. These fishwheels are used for in-season mark-recapture tag recoveries, abundance estimates, additional tagging (adult Chinook and Chum salmon, and Pacific Lamprey), and for harvesting (Sockeye Salmon for the Nisga'a Lisims Government's Nass River In-land Demonstration Fishery that is part of DFO's Inland Selective Demonstration Fishery Program and Coho Salmon as part of the Nisga'a Treaty). Of the 19,500 Sockeye caught at the GH fishwheels, 4,910 were harvested for the selective demonstration and treaty fisheries and 14,570 were released (see Nisga'a harvest summary in section below).

The Nass fishwheel catches are currently above average for Coho, steelhead, even-year Pink, and Pacific Lamprey, and below average for Sockeye, Chinook, and Chum salmon. Weekly comparisons of catches at the Gitwinksihlkw fishwheels to historical levels since 1994 follow the text summary. Fishwheel catches of salmon, steelhead, and Lamprey to date are shown below including tagging results and jacks caught.

FISHWHEEL CATCH SUMMARIES	SOCK	CHIN	COHO	STEEL	PINK-EVE	CHUM	LAMP
FISHWHEEL TOTAL CATCH OF ADULTS	28,621	1,654	3,251	239	7,887	18	464
HISTORICAL AVG CUM CATCH (00-13) TO DATE	33,800	5,300	1,802	114	3,340	25	294
HISTORICAL AVG CUM TOTAL CATCH (00-13)	42,000	5,400	13,300	1,000	13,000	130	500
AVERAGE DAILY CATCH (5 D) OF ADULTS - GW	121	3	201	14	429	1	5
AVERAGE DAILY CATCH (5 D) OF ADULTS - GH	323	1	277	13	259	0	5
FISHWHEEL TOTAL TAGGED (OR ADIPOSE FIN MARKED)	6,091	1,449	1,244	217	NA	19	321
FISHWHEEL TOTAL JACKS - GW ONLY	1,783	221	22	NA	NA	NA	NA
HISTORICAL MEAN JACKS AT GW (94-13) TO DATE	1,010	200	37	NA	NA	NA	NA

Other adult species and juvenile salmon catches at the fishwheels to date include: 77 Dolly Varden, 52 Pike Minnow, 43 Whitefish sp., 42 Rainbow Trout, 23 Peamouth Chub, 6 Red-Side Shiner, 5 Sucker, 4 Sculpin, 111 salmon smolts (74 Coho, 18 Chinook, 19 Sockeye), and 1 live beaver.

RUN SIZE AND ESCAPEMENT ESTIMATES FOR NASS SALMON & SUMMER-RUN STEELHEAD

In-season estimates of run size and projected forecasts to Gitwinksihlkw fishwheels for adult Nass salmon and summer-run steelhead are shown below. The current run size estimates are above average for Nass Coho and summer-run steelhead, and below average for Sockeye and Chinook salmon when compared to mean returns from 1994 to 2013.

	SOCK	CHIN	COHO	STEEL	6-Aug-14
IN-SEASON RUN SIZE ESTIMATE TO DATE	175,903	12,685	41,322	3,903	
<i>HISTORICAL MEAN RUN SIZE TO GW FOR DATE (94-13)</i>	228,000	20,200	13,709	1,770	
RUN SIZE TARGET 2014 (MIN. FOR STEELHEAD)	250,000	15,000	65,000	4,200	

In-season Sockeye estimates are generated using mark-recapture data from GH fishwheels that fluctuate over a 5 d period as GW tagged fish pass the GH site. In comparison, fishwheel catch index estimates to date at GW are ranging from 88,000 to 334,000 with a mean estimate of 190,000. The MR estimate is considered more accurate at predicting the in-season abundance of the run passing the GW fishwheels. The MR estimate (~176,000) is based on tags applied at GW fishwheels (n=6,091), total catch at GH and Upper Stratum IS fisheries (n=27,537), and tag recoveries in the Upper Stratum (n=1,046).

The current in-season Chinook estimate (12,685) is generated using a new mark-recapture method based on tags applied at GH fishwheels (n=1,072), total catch (n=1,435) and tag recoveries (n=134) to estimate mark rates and compute daily abundance estimates. In comparison, fishwheel catch index estimates to date are ranging from 3,400 to 27,000 with a mean estimate of 5,900 passing GW fishwheels. The MR estimate is hoped to be a more accurate estimate at predicting the in-season abundance passing GW; but estimates will fluctuate over a 10 d period while mark-rates fully stabilize.

In-season Coho estimates are generated using mark-recapture data from GH fishwheels that fluctuate over an 8 d period as GW tagged fish pass the GH site when tag recoveries at GH fishwheels are > 12. In comparison, fishwheel catch index estimates to date at GW are ranging from 19,000 to 52,000 with a mean estimate of 31,000. The MR estimate is considered more accurate at predicting the in-season abundance of the run passing the GW fishwheels. The MR estimate (~41,000) is based on tags applied at GW fishwheels (n=1,244), total catch at GH and Upper Stratum IS fisheries (n=1,805), and tag recoveries in the Upper Stratum (n=71).

The mark-rates for Coho are also used to estimate the in-season summer-run steelhead abundance based on higher catches of Coho that can determine fishwheel catch efficiencies for expanding steelhead catches at GW. As a result, the summer-run steelhead MR estimate is 3,900 compared to fishwheel catch index estimates ranging from 2,000 to 5,000 with a mean estimate of 3,100 passing GW fishwheels.

In-season projected forecasts to date for GW run sizes are currently tracking below target for Nass Sockeye and Chinook and above target for Nass Coho and summer-run steelhead (see table below). Estimates to GW are based on two methods, mean run timing and log-regression of the in-season to final estimate. Based on these current projected forecasts to GW, net escapement targets for Nass Sockeye (200,000) and Chinook (13,000) may not be reached depending on the final returns to GW and harvests above GW.

IN-SEASON FORECASTS TO GW - METHODS:	SOCK	CHIN	COHO	STEEL		6-Aug-14
1. RUN TIMING METHOD (94-13) - Mean Run timing	212,000	13,000	249,400	23,000		
Lower (+2 S.D.)	176,000	13,000	133,300	12,900		In-season to Final
Upper (+2 S.D.)	266,000	13,000	499,000	94,000		r^2 (CH) = 1.00
2. IN-SEASON TO FINAL (regression):	229,000	13,000	164,000	20,000		r^2 (SO) = 0.87
95% CI - lower	120,000	13,000	75,000	7,000		r^2 (CO) = 0.49
95% CI - upper	337,000	14,000	253,000	33,000		r^2 (ST) = 0.44
GW RUN SIZE TARGET (DEPENDING ON HARVESTS ABOVE GW)	250,000	15,000	65,000	4,200		

Net Escapement Estimates for adult Nass salmon and summer-run steelhead to date are as follows:

IN-SEASON NET ESCAPEMENT ESTIMATES	SOCK	CHIN	COHO	STEEL		6-Aug-14
HARVEST ESTIMATES ABOVE GW TO DATE	30,228	1,979	301	14		
NET ESCAPEMENT (ABOVE GW):	145,675	10,706	41,021	3,889		
NET ESCAPEMENT TARGET (UPPER RIVER ONLY)	200,000	13,000	60,000	4,000		

MEZIADIN FISHWAY UPDATE

The Meziadin Fishway operations started on 1 July. Counts of salmon at the fishway are currently below average for large Sockeye and well below for Chinook based on mean counts from 1990 to 2013. The Meziadin River water temperature is currently 0.3°C lower than the 1998-2013 average (16.0°C vs. 16.3°C).

MEZIADIN FISHWAY DATA	SOCK	CHIN	COHO	STEEL	BULL TROUT	6-Aug-14
TOTAL COUNTS OF ADULTS TO DATE	64,072	28	5	-	2	
HISTORICAL MEAN COUNT FOR DATE (90-13)	80,920	209	1	0	NA	
HISTORICAL MEAN TOTAL COUNT AT MEZ (90-13)	167,000	440	3,800	30	NA	
AVG DAILY COUNT OF ADULTS (PAST 5 D)	2,195	0	1	0	NA	
TOTAL COUNTS OF TAGS (or adipose punches)	1,267	0	0	0	NA	
TOTAL COUNTS OF JACKS	3,498	24	0	NA	NA	

KWINAGEESE WEIR UPDATE

The Kwinageese weir operations started on 10 July when the weir was fish tight. The water level at the weir site is currently 0.07 m lower than the 2002, 2009-2013 average (0.17 m vs. 0.24 m). The water temperature is currently 1°C higher than the 2002, 2009-2013 average (18°C vs. 17°C). Counts of salmon to date are well below average for Sockeye and Chinook based on past monitored years not impacted by blockage (2002 and 2011-2013 monitored years).

KWINAGEESE WEIR DATA	SOCK	CHIN	COHO	STEEL	BULL TROUT	6-Aug-14
TOTAL COUNTS OF ADULTS TO DATE	33	214	0	0	4	
HISTORICAL MEAN COUNT FOR DATE (02,05-06,12-13)	667	316	0	0	NA	
HISTORICAL MEAN TOTAL COUNT (02,05-06,12-13)	5,014	995	1,158	223	NA	
TOTAL COUNTS OF TAGS (or adipose punches)	2	4	0	0	NA	
TOTAL COUNTS OF JACKS	0	0	0	NA	NA	

With funding support from the Pacific Salmon Commission's Northern Fund, a helicopter flight to the Kwinageese blockage site was conducted on 5 August for assessing the water pooling capacity below the blockage area at low water levels (see photos after the text summary). With the loss of several of the concrete blocks from the thalweg of the channel that was detected on 15 July, the backwatering effect of the concrete weir has diminished but not been eliminated entirely. The concrete weir with blocks remaining on the river right bank and bedrock on the river left bank is still operating as a 'slot' control structure. Under current conditions, the height of the falls from the surface water level at the top to the base is approximately 1.4 m. In 2013, the height was 1.1 m. The current height is within the acceptable range for passage of adult Chinook, Coho, Sockeye, and steelhead. Therefore, NFWD's assessment indicated that the water pooling capacity is sufficient for fish passage at the current low water levels. Chinook and Sockeye continue to pass the Kwinageese weir each day so no immediate remedial actions at the blockage area are planned in 2014. Engineering designs are being considered for a more permanent solution to improve passage at the blockage site in 2015.

HARVEST ESTIMATES FOR ADULT NASS SALMON & STEELHEAD

ALASKAN FISHERIES IN SE ALASKA (information courtesy from ADFG's website):

Alaskan gillnet fisheries in **District 101 (Tree Point)** and **District 106 (Sumner and Upper Clarence)** started on 15 June and 16 June, respectively. Alaskan seine fisheries start dates: **District 101 (Lower Clarence/Revilla)** on 6

July, District 102 (Middle Clarence) on 15 June, District 103 (Cordova) on 20 July, and District 104 (Noyes/Dall) on 6 July.

The table below shows the current catches of salmon in Alaskan net fisheries in Districts 101-104 (and mean catch comparisons between 2000 and 2013) to **7 August** based on data from ADFG's website. Current salmon catches are above average for Sockeye, Chinook, Pink and Coho, and below average for Chum. Current catches of even-year Pinks (12.0 million) are 2.3 times higher than average (5.3 million).

IN-SEASON SE ALASKAN CUM. SALMON CATCH ESTIMATES (ADFG WEBSITE) - 2014								WEEK END: 9-Aug-14			
DISTRICTS	AREA	SOCK CATCH	AVG (00-13)	CHIN CATCH	AVG (00-13)	PINK CATCH	AVG EVE (00-13)	CHUM CATCH	AVG (00-13)	COHO CATCH	AVG (00-13)
DIST 101 GN	TREE PT	39,000	73,000	1,300	1,400	375,180	204,100	163,000	191,000	7,600	14,000
DIST 106 GN	UPP. CLAR	46,000	84,000	1,200	1,400	195,000	79,500	86,000	128,000	77,500	53,300
DIST 101 SN	LOW CLAR	45,000	47,600	900	700	3,891,000	2,386,000	154,000	213,000	23,300	21,100
DIST 102 SN	MID CLAR.	25,500	25,700	1,400	670	1,761,000	1,319,800	327,000	337,000	25,500	29,700
DIST 103 SN	CORDOVA	9,800	14,000	150	300	770,000	212,000	17,300	27,000	10,200	8,000
DIST 104 SN	NOYES/DALL	330,000	173,000	7,300	4,000	5,375,000	1,080,000	136,000	118,000	84,000	43,800
CUMULATIVE TOTAL		495,300	417,300	12,250	8,470	12,367,180	5,281,400	883,300	1,014,000	228,100	169,900

Of the total in-season Sockeye catch reported in Alaskan fisheries to date (495,000), approximately 110,000 (~22%) are estimated as Nass origin based on mean stock composition estimates from 1982 to 2011. The estimated catch of Nass Sockeye to date is just below average (114,000). The average total mean harvest of Nass Sockeye in Alaskan fisheries from 2000 to 2012 run reconstructed results is 138,000 (range: 47,000-300,000).

CANADIAN COMMERCIAL NET FISHERIES IN AREA 3 (information courtesy from DFO Prince Rupert):

DFO commercial net fishery openings in Area 3 for 2014 to **6 August** are: 17 gillnet and 12 seine. Commercial net harvest and release data to date for salmon and steelhead in Area 3 are shown below:

GEAR	DATE	Vessels	SO-harv	SO-Rel	CO-HARV	CO-Rel	PK-HARV	PK-Rel	Chum-harv	Chum-Rel	CH-harv	CH-Rel	STEEL-Rel
GN	6/10/2014	148	4,929	0	2	1	34	0	0	16	300	92	63
	6/11/2014	109	4,770	0	0	0	24	0	0	15	71	39	24
	6/16/2014	152	14,234	0	12	0	1	0	0	23	417	56	35
	6/17/2014	145	5,718	0	19	4	1	0	0	23	66	57	44
	6/23/2014	166	15,591	0	40	7	16	0	0	164	264	53	27
	6/24/2014	118	9,294	0	60	7	15	0	0	252	284	43	8
	6/26/2014	166	9,981	0	105	10	53	7	0	305	377	77	5
	6/27/2014	135	5,752	0	99	8	99	0	0	145	110	32	4
	6/30/2014	166	10,579	0	235	0	876	0	0	793	311	75	8
	7/1/2014	140	6,644	0	43	0	459	0	0	198	9	10	0
	7/3/2014	158	5,953	0	150	0	2,370	0	1,634	198	0	32	0
	7/4/2014	132	4,582	0	61	0	3,435	0	2,313	50	0	17	0
	7/7/2014	140	6,476	0	137	0	3,372	0	0	711	0	194	0
	7/8/2014	106	1,249	0	9	0	574	0	0	206	0	15	0
	7/27/2014	61	2,471	0	210	0	7,209	0	0	584	0	0	0
7/30/2014	13	1,100	0	127	0	4,652	0	0	196	0	0	7	
7/31/2014	14	780	0	125	0	2,681	0	0	153	0	0	10	
GN Total		2,069	110,103	0	1,434	37	25,871	7	3,947	4,032	2,209	792	235
SN	7/7/2014	8	600	0	142	0	2,483	0	3,266	0	0	7	0
	7/8/2014	8	1,112	0	173	0	3,568	0	3,839	0	0	25	0
	7/14/2014	22	0	1,417	628	0	39,855	0	5,314	0	0	81	4
	7/15/2014	22	0	3,168	726	0	82,192	0	4,048	0	0	116	0
	7/17/2014	27	0	3,496	1,089	0	146,232	0	6,642	0	0	182	0
	7/18/2014	27	0	2,592	486	0	96,255	0	2,889	0	0	105	0
	7/21/2014	18	0	2,124	661	0	92,804	0	0	4,554	0	103	0
	7/22/2014	18	0	2,484	763	0	84,485	0	0	3,816	0	109	0
	7/28/2014	13	6,713	0	304	0	111,500	0	0	735	0	32	11
	7/29/2014	13	6,946	0	752	0	42,307	0	0	573	0	34	30
	8/4/2014	13	3,167	0	933	0	56,227	0	0	1,320	0	29	28
8/5/2014	20	2,347	0	1,541	0	85,728	0	0	2,089	0	10	13	
SN Total		209	20,885	15,281	8,198	0	843,636	0	25,998	13,087	0	833	86
Grand Total		2,278	130,988	15,281	9,632	37	869,507	7	29,945	17,119	2,209	1,625	321

LABELS: SO=SOCKEYE, PK=PINK, CO=COHO, CH=CHINOOK; STEEL=STEELHEAD, HARV=HARVESTED, AND REL=RELEASED.

DFO implemented management actions in Area 3 in 2014 to reduce harvest impacts on the Kwinageese Sockeye stock during their migration through Area 3. The stock requires rebuilding from a past spawning barrier detected in 2011 and from poor returns in 2010 and from 2012-2013. Sockeye retention was not permitted in commercial

fisheries in Area 3 from 12-24 July, the anticipated peak of the Kwinageese Sockeye migration, as documented in DFO's 2014 Integrated Fisheries Management Plan (IFMP).

Future commercial net openings in Area 3 (16 hours): Seine opening was announced for 11 August (Monday).

Sub-area breakout of Area 3 commercial catch is as follows:

GEAR	AREA 3	Vessels	SO-harv	SO-Rel	CO-HARV	CO-Rel	PK-HARV	PK-Rel	Chum-harv	Chum-Rel	CH-harv	CH-Rel	STEEL-Rel
GN	3-12	1032	58,501	0	400	18	9,397	4	0	1,151	1,754	447	137
	3-7B	522	26,991	0	409	13	9,829	1	2,729	1,395	132	139	35
	3-7A	449	20,942	0	510	6	4,789	2	0	1,357	261	196	63
	BOSTON ROCKS	66	3,669	0	115	0	1,856	0	1,218	129	62	10	0
GN Total		2,069	110,103	0	1,434	37	25,871	7	3,947	4,032	2,209	792	235
SN	3-7B	97	4,502	8,972	4,073	0	396,719	0	11,367	7,256	0	456	15
	BOSTON ROCKS	55	1,584	3,690	1,474	0	205,715	0	8,939	2,687	0	182	17
	MASK	26	14,207	0	1,740	0	138,532	0	0	1,356	0	59	53
	TRACEY BAY	29	457	2,619	861	0	94,670	0	5,692	1,648	0	126	0
SN Total		209	20,885	15,281	8,198	0	843,636	0	25,998	13,087	0	833	86
Grand Total		2,278	130,988	15,281	9,632	37	869,507	7	29,945	17,119	2,209	1,625	321

Note: SN total includes two sub areas not shown due to fewer than 5 boats fished.

Of the 130,988 Sockeye harvested in Area 3 to date, we are estimating ~95,000 (72%) are of Nass origin. Of the 366,000 Sockeye harvested in Area 4 gillnet fisheries to date, we are estimating approximately 12,000 (10%) are of Nass origin in the Northern Area 4 areas.

UPPER NASS HARVESTS – GITANYOW FISHERIES (information courtesy of the Gitanyow Fisheries Authority)

Reported salmon harvests in Gitanyow fisheries to 2 August are: 9,420 Sockeye, 75 Chinook (62 large and 13 small), and 3 Coho. Of the total Sockeye harvested, 875 were part of DFO's Inland Selective Economic Demonstration Fishery Program in which the Gitanyow have 63 Area C licenses and have been allocated 6,312 Sockeye based on Area 3 commercial gillnet catches to date. Of the total catch reported in Gitanyow fisheries, 42 Sockeye tags were returned to NFWD to date. The average salmon harvests in Gitanyow fisheries from 2000 to 2013 are: 7,200 Sockeye, 153 Chinook (large), and 193 Coho.

NISGA'A DOMESTIC (FSC) AND SALE FISHERIES:

Nisga'a domestic and sale fisheries are monitored by the Nisga'a Fisheries and Wildlife Department. Monitoring began on 4 May 2014. Cumulative harvests to **6 August** are shown in the table below. For the domestic harvest week ending period, mean cumulative harvests from 2000 to 2013 are shown for comparison. The current domestic harvest estimates in 2014 are above average for Sockeye, Pink, and Coho, about average for steelhead (spring and summer runs combined), and below average for Chinook and Chum.

FSC Reported Week Ending Period		DOMESTIC (FSC) HARVESTS TO WK END - 2014		TOTAL HARVESTS TO DATE INCLUDING SALE FISHERIES - 2014	
NASS SPECIES	Wk end	Harvest	Mean*	Harvest	Mean*
CHINOOK	2-Aug-14	4,533	4,900	4,533	5,800
SOCKEYE	2-Aug-14	24,819	21,400	70,838	81,400
PINK	2-Aug-14	5,276	1,700	5,686	14,000
COHO	2-Aug-14	318	210	613	1,220
CHUM	2-Aug-14	242	270	242	300
STEELHEAD	2-Aug-14	128	130	128	160

* Mean harvests from 2000-2013 for week end periods. Harvests include all gear types estimates (net, angling, seine, fishwheels, etc.)

Nisga'a Sale fishery information to date:

- Total Individual-sale (IS) fisher permits issued to date are 219 (including 45 elder permits). Of the total issued, 119 have actively participated in the sale fisheries from 13 June to 15 July.
- Permit distribution by community is: 50 Gitlaktamix, 41 Gitwinksihlkw, 36 Prince Rupert, 35 Gingolx, 26 Laxgalts'ap, 18 Terrace, and 13 Other (Port Edward, Richmond, Telkwa, Kitkatla, Kitimat, Kitwanga, Prince George and Port Alberni).
- The preliminary catch target for the marine IS fishery was ~35% of the estimated sale target (~24,500 Sockeye based on pre-season return forecasts). A total of 7 fisheries have been conducted to date. The

Nisga'a marine sale fishery was closed from 12-24 July for the Kwinageese Sockeye rebuilding management period. The current marine IS catch is 24,041 Sockeye, 410 Pink, and 5 Coho salmon. **A marine IS fishery (16 hr; 06:00 to 22:00 hrs) has been announced for August 12 (Tuesday) to target Pink and Coho salmon.** Individual catch data for the marine IS fishery is shown below.

NISGA'A MARINE SALE FISHERY:			
NUMBER OF NISGA'A MARINE FISHERIES (16 HR OPENINGS):		7	13-14 JUNE, 19-20 JUNE, 28-29 JUNE, 6 JULY
DATA FROM 13 JUNE FISHERY (18 BOATS - 16 FISHERS) - REVIEWED			2770 SOCKEYE
DATA FROM 14 JUNE FISHERY (21 BOATS - 22 FISHERS) - REVIEWED			4731 SOCKEYE
DATA FROM 19 JUNE FISHERY (25 BOATS - 25 FISHERS) - REVIEWED			2356 SOCKEYE
DATA FROM 20 JUNE FISHERY (25 BOATS - 29 FISHERS) - REVIEWED			3669 SOCKEYE
DATA FROM 28 JUNE FISHERY (28 BOATS - 25 FISHERS) - REVIEWED			2595 SOCKEYE
DATA FROM 29 JUNE FISHERY (28 BOATS - 35 FISHERS) - REVIEWED			5078 SOCKEYE, 4 PINK
DATA FROM 6 JULY FISHERY (28 BOATS - 30 FISHERS) - REVIEWED			2842 SOCKEYE, 406 PINK, 5 COHO
NEXT NISGA'A MARINE FISHERY PLANNED:			OPENING ANNOUNCED FOR AUGUST 12 (TUESDAY)

- A total of 6 in-river IS fisheries have been conducted to date. The Nisga'a in-river sale fishery closed from 16-28 July for the Kwinageese Sockeye rebuilding management period as the stock passes upriver. The current in-river IS catch is 17,068 Sockeye and 8 Coho salmon. **An in-river IS fishery (10 hr; 08:00 to 18:00 hrs) has been announced for August 11 (Monday) to target Coho Salmon.** Individual catch data for the in-river IS fishery is shown below.

NISGA'A IN-RIVER SALE FISHERY:			
NUMBER OF NISGA'A IN-RIVER FISHERIES (10 HR OPENINGS):		6	5 JULY, 7 JULY, 9 JULY, 11 JULY, 13 JULY, 15 JULY
DATA FROM 5 JULY FISHERY (31 FISHERS) - REVIEWED			1395 SOCKEYE, 2 COHO
DATA FROM 7 JULY FISHERY (32 FISHERS) - REVIEWED			2520 SOCKEYE
DATA FROM 9 JULY FISHERY (41 FISHERS) - REVIEWED			2878 SOCKEYE, 1 COHO
DATA FROM 11 JULY FISHERY (39 FISHERS) - REVIEWED			2477 SOCKEYE
DATA FROM 13 JULY FISHERY (38 FISHERS) - PRELIMINARY			3319 SOCKEYE, 3 COHO
DATA FROM 15 JULY FISHERY (38 FISHERS) - PRELIMINARY			4479 SOCKEYE, 1 COHO
NEXT NISGA'A IN-RIVER FISHERY PLANNED:			OPENING ANNOUNCED FOR AUGUST 11 (MONDAY)

- A Nisga'a seiner (Ocean Virtue) has been contracted by NLG to fish the entitlement of Nass Area Pink and Coho salmon as part of NLG's communal sale fishery. Based on current entitlement targets, the seiner catch limits have been set to a maximum of 40,000 Pink and 5,000 Coho salmon. These limits may be adjusted as data become available for determining the in-season entitlements. The seiner began fishing in Area 3 on 7 August. Catch and release data will be provided in future updates.

NLG's inland selective demonstration fishery to date:

NLG were successful in negotiating the leasing of 30 Area C commercial gillnet licenses to participate in DFO's Inland Selective Demonstration Fishery Program in 2014. DFO allocate weekly catches of Sockeye to NLG's inland selective fishery program based on a license sharing formula from commercial gillnet catches in Area 3. These harvests are additional to Nisga'a Treaty Allocations (and IS targets) and have to be caught selectively (no gillnets). The GH fishwheels were used to harvest these additional catch shares as arranged by NLG and Nisga'a Fisheries Limited (NFL). As of 6 August, 4,793 Sockeye were allocated to this fishery by DFO. Of the 19,480 Sockeye caught at the GH fishwheels to date, 4,910 were harvested (4,788 Sockeye as part of the demonstration fishery from 27-29 June, 5-14 July, and 6 August, and 122 as part of the NLG treaty catch) and 14,570 were released. The NLG demonstration fishery closed from 22 July to 3 August for the Kwinageese Sockeye rebuilding management period as the stock passed upriver, and reopened on 6 August when DFO allocated additional catch allocations from Area 3 commercial gillnet fisheries that were conducted after 24 July.

The total harvest summary to date in all of the Nisga'a fisheries are as follows:

NISGA'A TOTAL HARVEST SUMMARY	SOCK	CHIN	COHO	PINK-EVE	CHUM	STEEL
MARINE SALE FISHERY TOTAL	24,041	CLOSED	5	410	CLOSED	CLOSED
IN-RIVER SALE FISHERY TOTAL	17,068	CLOSED	8	0	CLOSED	CLOSED
INDIVIDUAL SALE (IS) FISHERY TOTAL	41,109	CLOSED	13	410	CLOSED	CLOSED
NLG COMMUNAL SELECTIVE FISHWHEEL TREATY FISHERY	122	CLOSED	282	CLOSED	CLOSED	CLOSED
NLG COMMUNAL SEINE SELECTIVE TREATY FISHERY	0	0	0	0	CLOSED	CLOSED
DOMESTIC (FSC) GILLNET FISHERY - WK END 2 AUG	24,819	4,533	318	5,276	242	128
SUB TOTAL (NLG TREATY FISHERIES)	66,050	4,533	613	5,686	242	128
NLG SOCK DEMONSTRATION SELECTIVE FISHERY HARVEST	4,788	CLOSED	CLOSED	CLOSED	CLOSED	CLOSED
GRAND TOTAL	70,838	4,533	613	5,686	242	128

TOTAL RETURN TO CANADA (TRTC) AND NISGA'A ENTITLEMENT ESTIMATES FOR NASS SALMON

Pre-season forecasts for Nass salmon returns in 2014 projected below average returns for Sockeye, Chinook, even-year Pink, and Chum, and an above average return for Coho. Pre-season Nisga'a treaty catch potential by species are shown below:

PRE-SEASON TRTC & ENTITLEMENT FORECASTS	SOCK	CHIN	COHO	PINK-EVE	CHUM
HISTORICAL MEAN TRTC (1994-2013)	580,000	33,000	200,000	800,000	55,000
PRE-SEASON TRTC FORECAST	542,000	24,000	259,000	496,000	15,000
PRE-SEASON NISGA'A ENTITLEMENT	94,000	5,000	19,200	43,000	No surplus
CUM NISGA'A UNDERAGE (+)/OVERAGE (-): 2000-13	6,407	8,242	7,588	-96	30,193
TOTAL PRE-SEASON NISGA'A CATCH POTENTIAL	100,000	13,200	27,000	43,000	No surplus

The current tracking of in-season TRTC estimates for Nass Sockeye and Chinook to **6 August** are based on mean run timing to date (Sockeye 84% and Chinook 96%) with minimum and maximum run timing for range estimates. The in-season TRTC estimates are currently tracking below the pre-season forecasts for both species.

IN-SEASON TRTC & ENTITLEMENT ESTIMATES	SOCK	CHIN	COHO	PINK-EVE	CHUM
PROJECTED TRTC BASED ON MEAN RUN % & MR EST.	398,000	20,000	Pre-season	Pre-season	Pre-season
ESTIMATED %TRTC TO DATE: MEAN. RUN TIMING	84%	96%	17%	12%	13%
MINIMUM FORECAST	361,000	20,000	Pre-season	Pre-season	Pre-season
MAXIMUM FORECAST	515,000	20,000	Pre-season	Pre-season	Pre-season
IN-SEASON NISGA'A ENTITLEMENT TARGET	62,000	4,200			
IN-SEASON UNDERAGE (+)/OVERAGE (-)	6,407	330	7,588	-96	small return
TOTAL IN-SEASON NISGA'A TREATY CATCH POTENTIAL	68,000	4,500	27,000	43,000	No surplus
MINIMUM ENTITLEMENT FORECAST	54,000	4,200	Pre-season	Pre-season	Pre-season
MAXIMUM ENTITLEMENT FORECAST	88,000	4,200	Pre-season	Pre-season	Pre-season
NLG SELECTIVE DEMONSTRATION FISHERY ALLOCATION	4,793	NA	NA	NA	NA
TOTAL IN-SEASON NISGA'A CATCH POTENTIAL - ALL FISHERIES	73,000	4,500	27,000	43,000	No surplus

The in-season Nisga'a entitlement estimate for **Nass Sockeye** is ~**73,000** based on the in-season TRTC mean point estimate (398,000), the cumulative underage from 2000-2013 (6,407), and NLG demonstration fishery allocation (4,793). This estimate is ~30,000 less than the pre-season forecast and is a result of a lower return of age 4 Sockeye to date than predicted. The current catch of Nass Sockeye to date in Nisga'a fisheries is ~71,000. The remaining catch will be taken in domestic and incidentally in IS sale fisheries targeting Coho and Pink salmon.

The in-season Nisga'a entitlement estimate for **Nass Chinook** is ~**4,500** based on the in-season TRTC mean point estimate (20,000). The current catch of Nass Chinook to date in Nisga'a fisheries is 4,533. The cumulative underage available (8,250) will only be applied if the total harvest of Chinook is greater than the final entitlement amount.

The in-season Nisga'a entitlement estimate for **Nass Coho** continues to be based on the pre-season TRTC mean point forecast (259,000) until >25% of the run has returned to generate in-season TRTC/entitlement estimates. The preliminary entitlement estimate is **19,200**, the maximum allowed under the Nisga'a Treaty. An additional 7,500 Coho are available to catch if the return is strong as a cumulative underage from 2000-2013. The current catch of Nass Coho to date in Nisga'a fisheries is 613. Approximately 17% of the Nass Coho run has returned to date based on a mean run timing estimate from 1994 to 2013 returns.

The in-season Nisga'a entitlement estimate for **Nass Pink** continues to be based on the pre-season TRTC mean point forecast (496,000) until >25% of the run has returned to generate in-season TRTC/entitlement estimates. The preliminary target for the entitlement is **43,000**. The current catch of Nass Pink to date in Nisga'a fisheries is ~5,700. Approximately 12% of the Nass Pink run has returned to date based on a mean run timing estimate from 1994 to 2013 returns.

Nass Chum are forecasted to return below the minimum escapement goal (30,000) so all Nisga'a catch will be incidental for 2014 and anticipated to be <**500**. The current catch of Nass Chum to date in Nisga'a fisheries is 242. Approximately 13% of the Nass Chum run has returned to date based on a mean run timing estimate and in-season TRTC/entitlement estimates will begin when >25% has returned. A cumulative underage from 2000-

2013 (~30,000) is available to be caught if the return was strong and above the escapement goal. However, the Nass Area Chum has not returned above the escapement goal since 2006 and is not expected to reach the escapement goal in 2014.

The next Nass River public stock assessment update from Nisga'a Fisheries is planned for: **Thursday, 14 August 2014.**

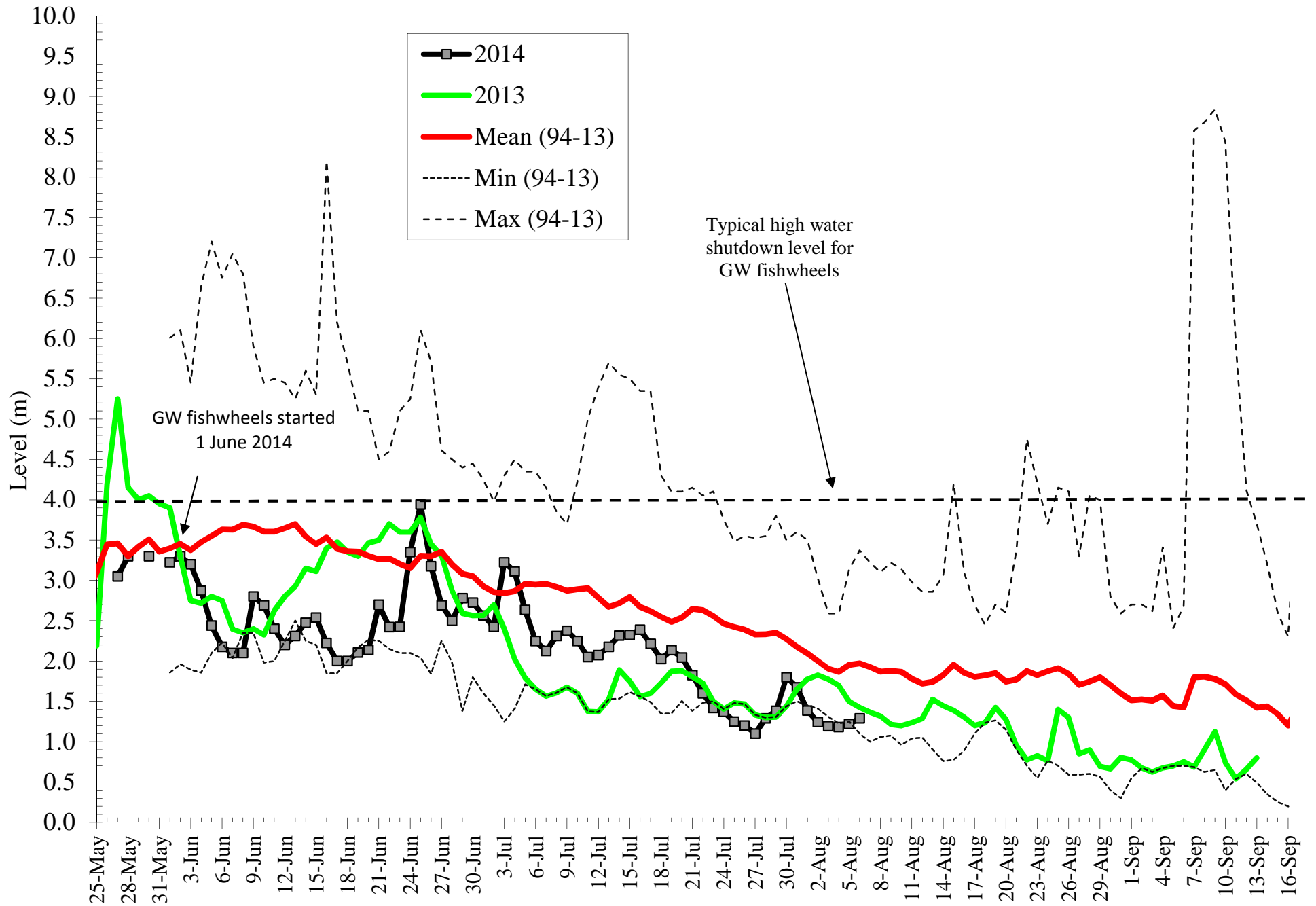
Nass salmon run size updates are also available on Mondays and Wednesdays at the following link: <ftp://ftp.lgl.com/Nass%20Stock%20Assessment%20Updates/>.

Respectfully,

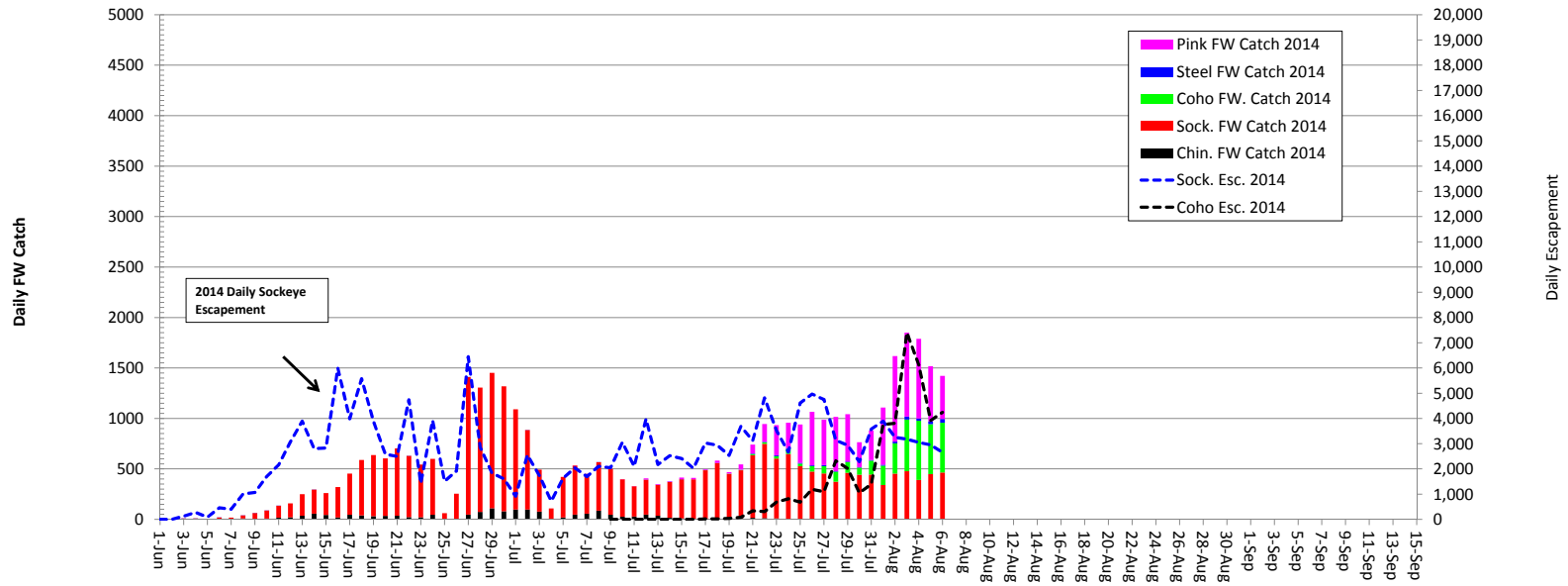
Richard Alexander, R.P.Bio
Nisga'a Fisheries Stock Assessment Management Biologist
Nisga'a Lisims Government - Fisheries & Wildlife Department



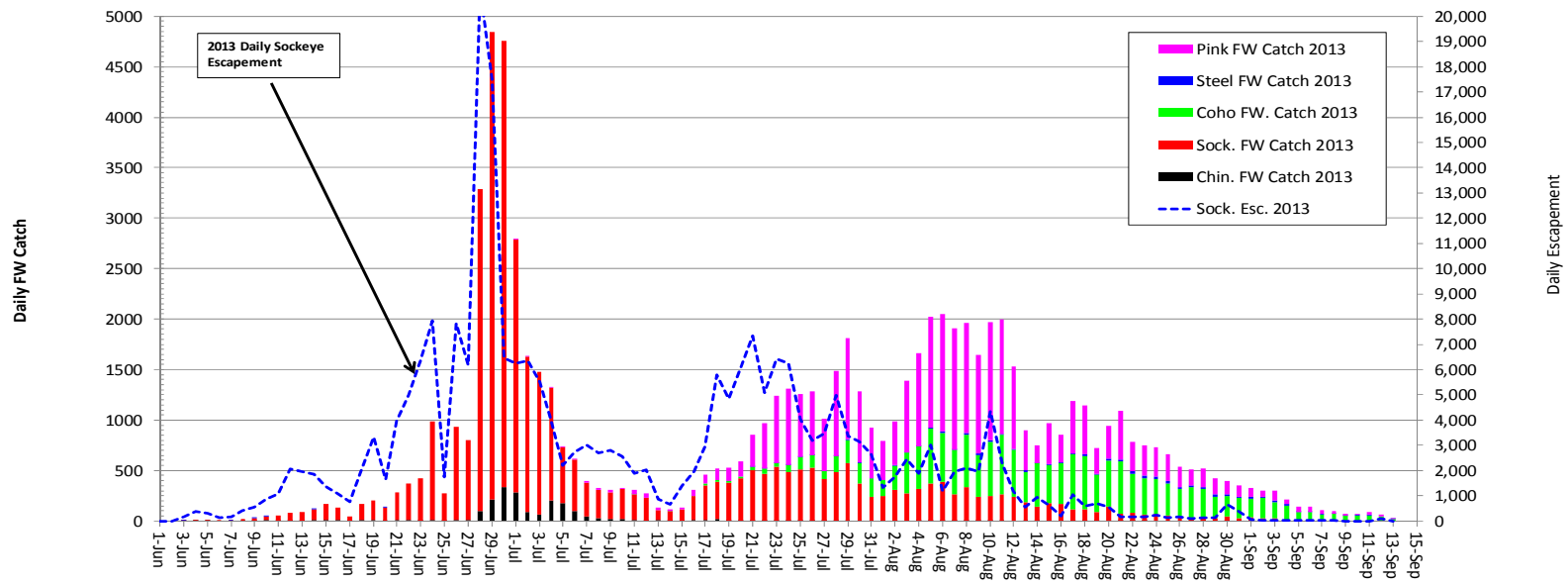
Daily Water Level at Gitwinksihlkw Fishwheels 2014



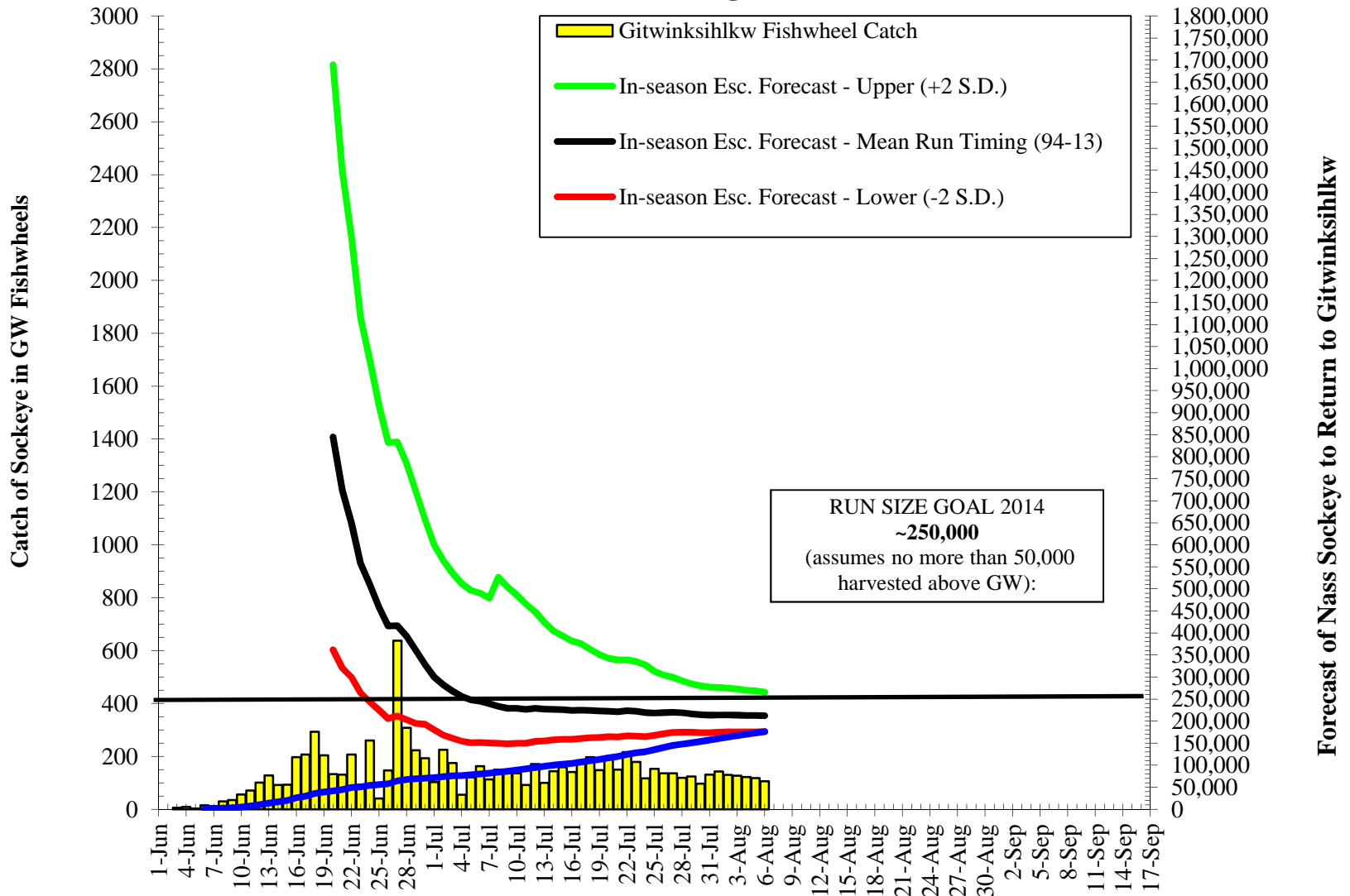
DAILY CATCHES OF NASS SALMON AND STEELHEAD AT THE FISHWHEELS 2014



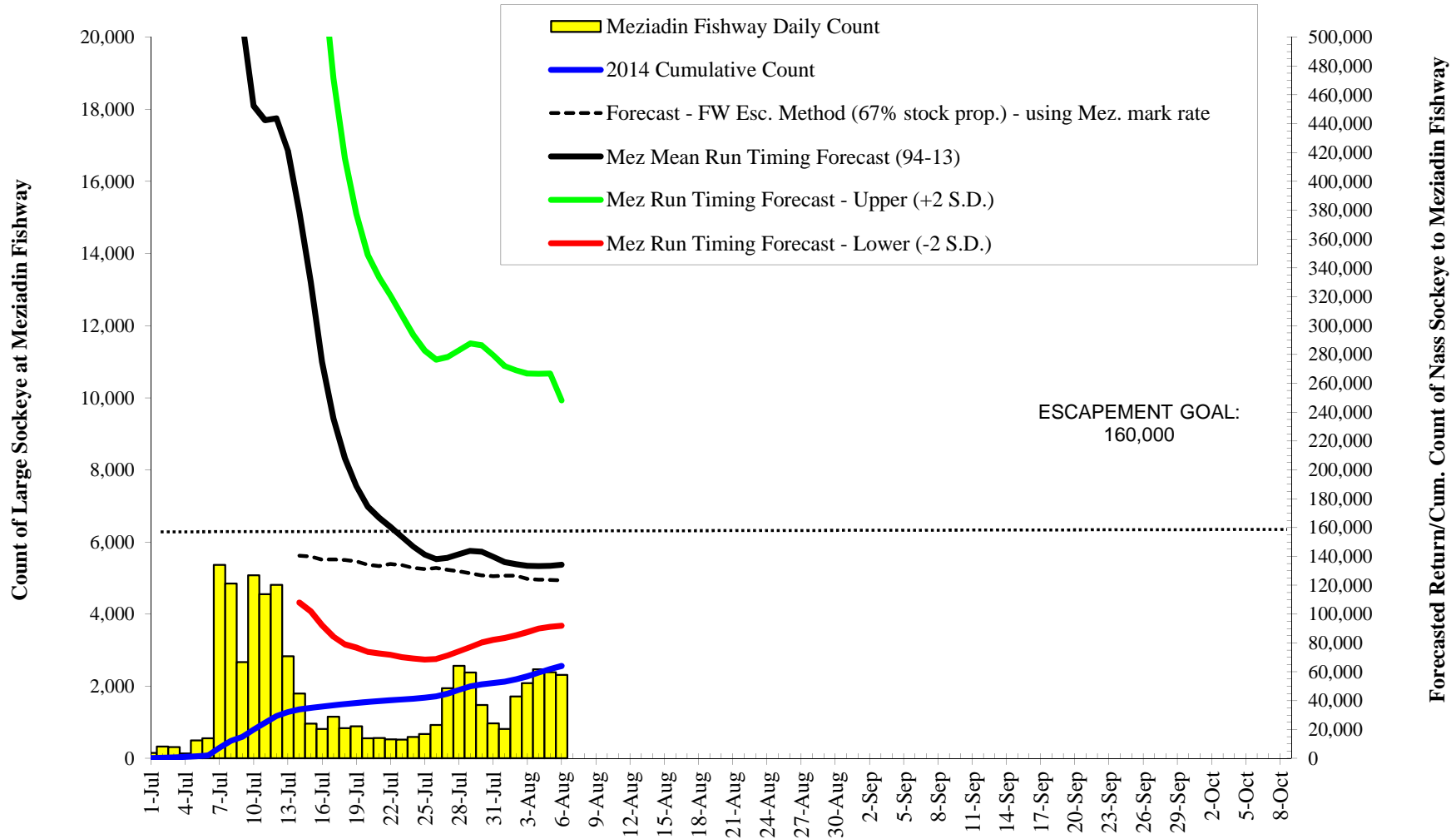
DAILY CATCHES OF NASS SALMON AND STEELHEAD AT THE FISHWHEELS 2013



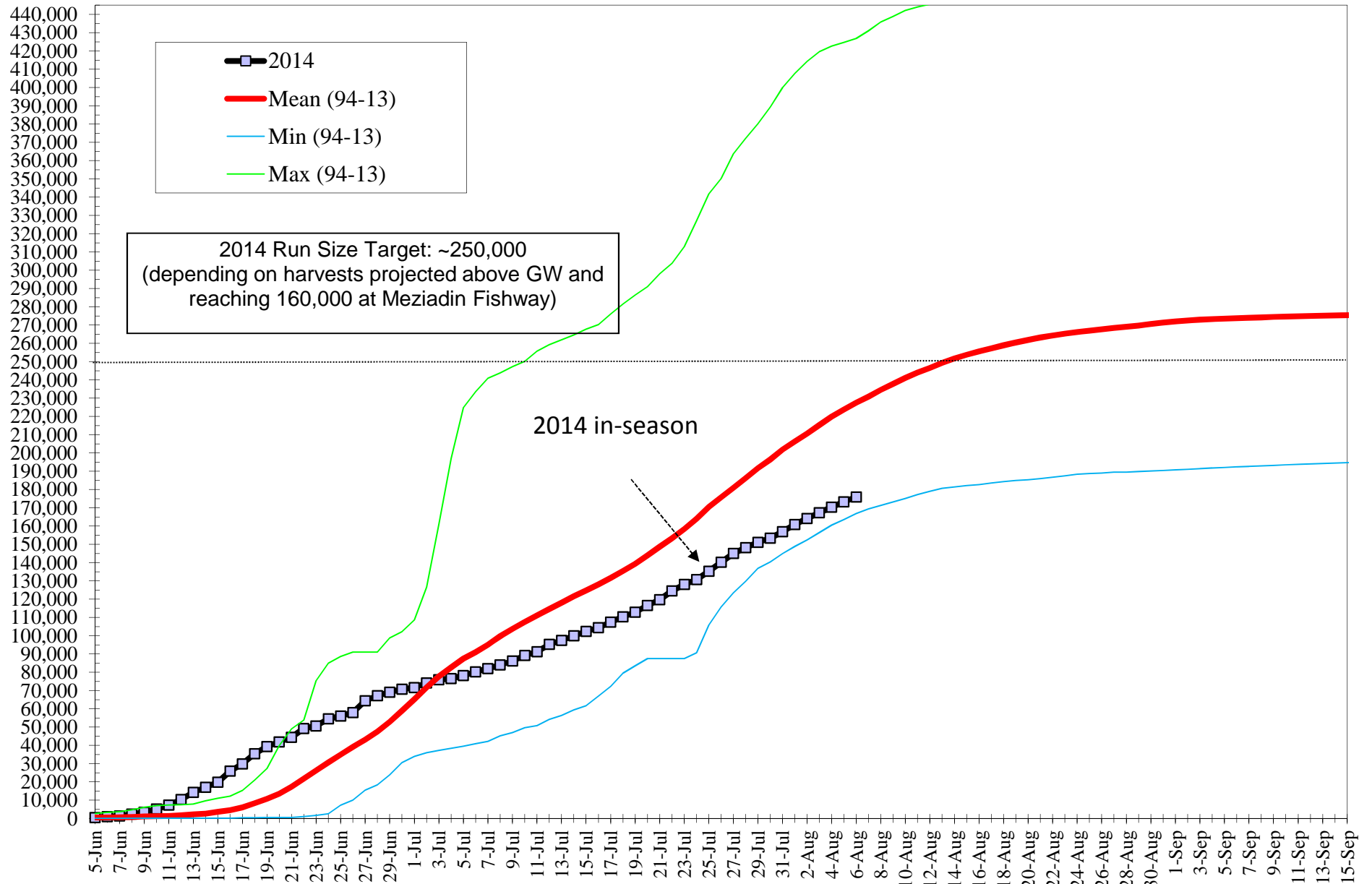
Nass Sockeye Run Forecasts to Gitwinksihlkw Fishwheels 2014 (Mean Run timing - 1994-13)



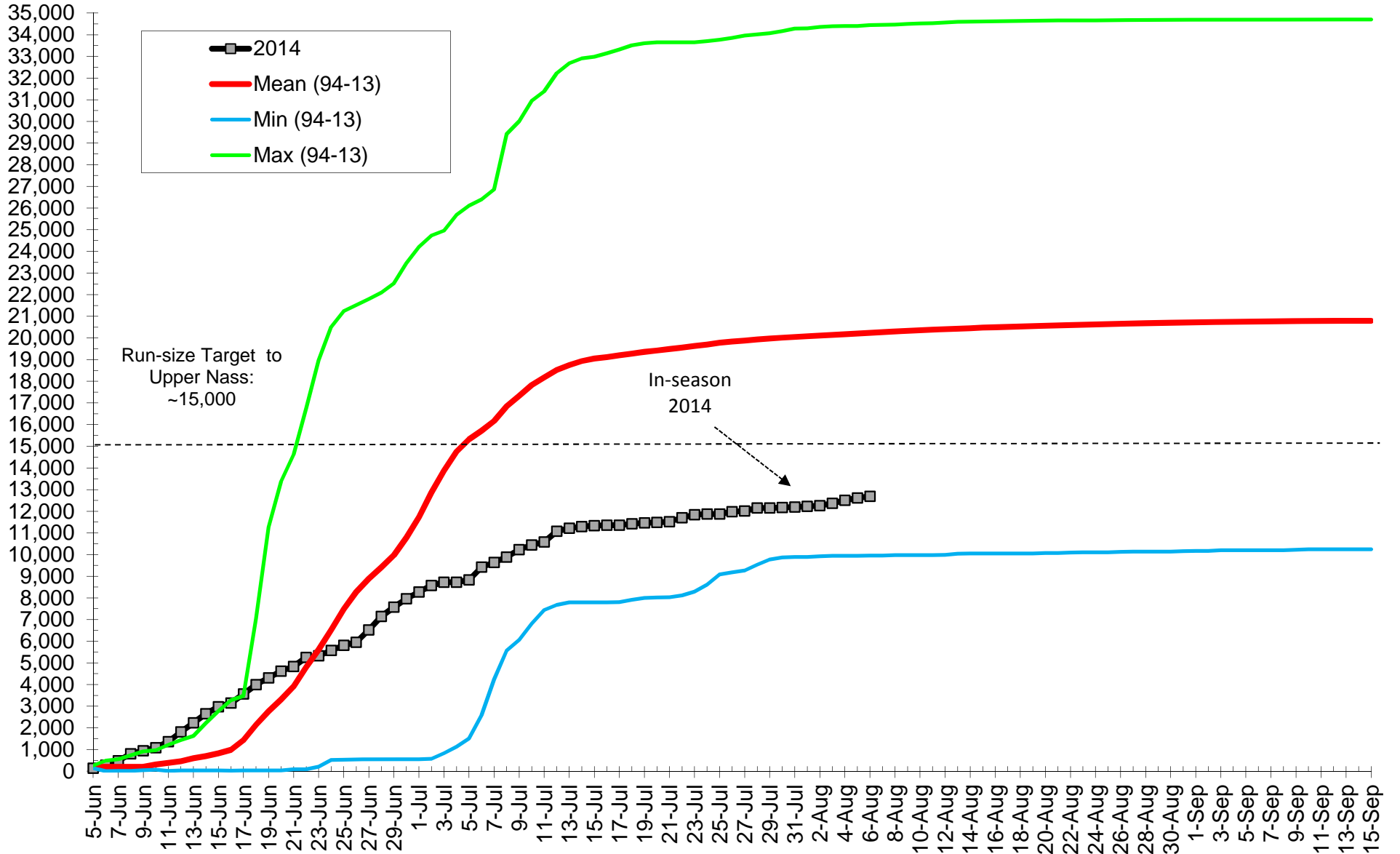
Meziadin Fishway Sockeye Counts & In-season Forecast Data 2014



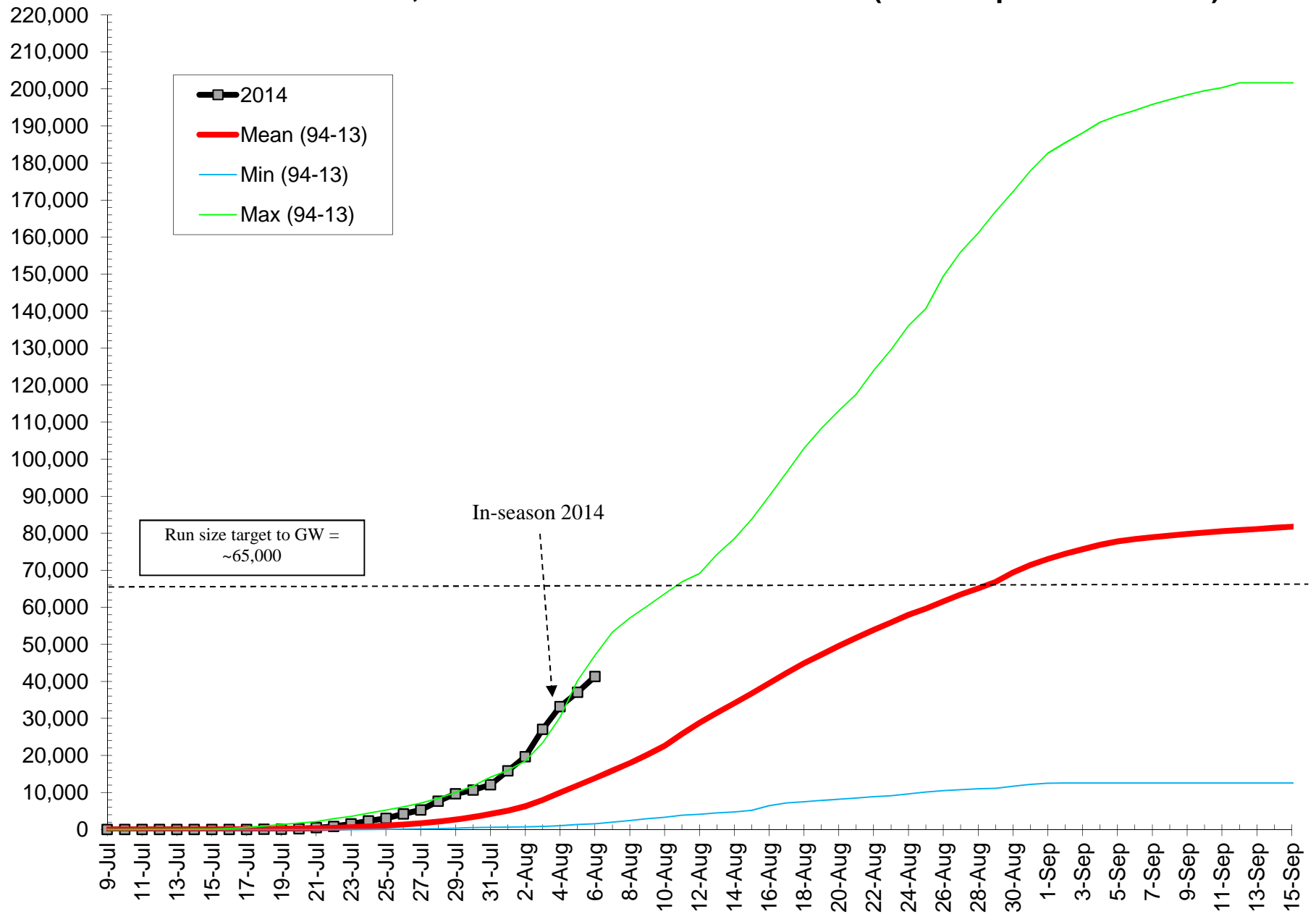
Nass Sockeye Cum. Run Size to Gitwinksilhkw Fishwheels 2014 versus 94-13 Mean, Min, Max returns (before upriver harvests)



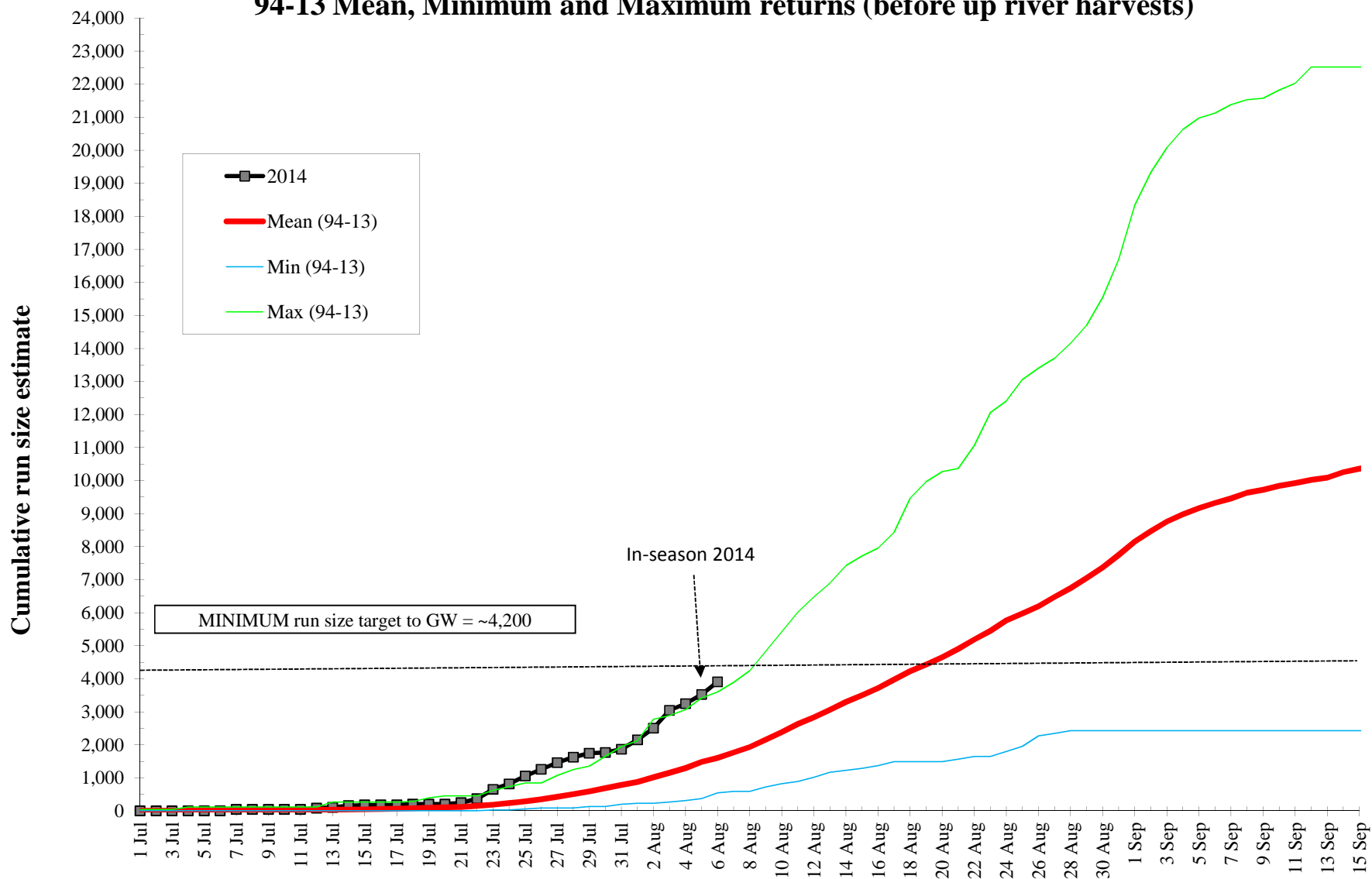
Cumulative Nass Adult Chinook Run Size to Gitwinksihlkw 2014 vs 94-13 Mean, Minimum and Maximum returns (before up river harvests)



Cumulative Nass Adult Coho Run Size to Gitwinksihlkw 2014 vs. 94-13 Mean, Minimum and Maximum returns (before up river harvests)



Cumulative Nass Adult Summer-run Steelhead Return to Gitwinksihlkw 2014 vs. 94-13 Mean, Minimum and Maximum returns (before up river harvests)



Cumulative adult sockeye salmon run size to the Nass River at Gitwinksihkw, 1994-2014.

Note: In-season cum. values with shading are preliminary and will change with more data.

Date	Cumulative run size																			IN-SEASON (FW-MR)									
	1994	1995	1996	1997	1998	1999	2000	2001	2002	2003	2004	2005	2006	2007	2008	2009	2010	2011	2012	2013	cum.	Mean. Cum	2014						
1-Jun																			216	0	0	108	0						
2-Jun																175	119		809	0	0	276	0						
3-Jun			71													175	119		1,173	179		129	343	129					
4-Jun			71													175	158		1,609	536		403	510	274					
5-Jun			71									40				175	238		2,646	834		494	510	91					
6-Jun			71									40				207	175	360	26	3,245	953		950	510	456				
7-Jun			71									121				326	175	401	78	3,682	1,102		1,353	744	402				
8-Jun			71	71			107				864					533	175	441	285	4,754	1,519		2,359	758	1,006				
9-Jun			71	208			256				1,326					229	209		741	175	645	544	6,136	2,054	3,424	1,050	1,065		
10-Jun	142		71	394			497				1,505					229	419		1,127	175	645	725	7,027	2,918	5,127	1,221	1,704		
11-Jun	176		595	546			533				1,521					174	364	419		1,542	175	849	1,173	7,398	3,960	7,287	1,388	2,160	
12-Jun	224		2,638	908	793		533	111			1,814					1,059	836	419		1,928	175	1,134	1,587	7,413	5,985	10,359	1,722	3,072	
13-Jun	262		4,640	1,135	1,897		533	111			2,577					1,783	1,196	419		2,314	175	1,294	2,000	7,413	7,890	14,253	2,227	3,894	
14-Jun	350	350	7,198	1,422	2,592		533	111			2,756					1,511	1,723	419		2,551	175	1,414	3,034	8,430	9,686	17,052	2,591	2,799	
15-Jun	526	1,880	9,928	1,969	4,610		533	111			3,032					5,204	3,328	2,250	419		2,758	175	1,733	4,584	10,465	11,034	19,881	3,586	2,829
16-Jun	956	3,196	11,257	2,236	6,385		533	553			3,877					10,343	4,973	3,776	419	154	3,466	1,772	2,092	5,896	12,009	12,098	25,873	4,526	5,993
17-Jun	1,841	4,853	12,565	2,466	9,614		533	2,517			4,832					15,268	8,689	6,161	419	488	4,587	4,445	2,691	6,467	12,082	12,846	29,861	5,967	3,988
18-Jun	2,707	6,792	14,413	2,622	15,508		533	4,342			6,216					20,996	17,734	9,656	419	561	6,210	8,333	4,327	8,899	12,446	14,876	35,438	8,294	5,576
19-Jun	3,642	9,945	17,344	3,343	18,485		533	7,799			6,687					27,393	23,851	11,760	605	561	9,868	13,228	6,282	10,605	13,478	18,148	39,322	10,714	3,884
20-Jun	4,483	15,043	21,510	4,077	23,228		533	11,781			7,033					39,866	24,670	13,426	2,630	561	13,792	17,741	9,109	12,357	13,711	19,748	41,904	13,437	2,581
21-Jun	6,705	23,802	24,447	4,888	28,638		533	17,506			7,075	29,917				49,200	24,670	15,863	4,702	659	19,605	23,514	12,059	13,766	14,572	23,618	44,396	17,278	2,493
22-Jun	8,698	31,298	26,700	5,953	33,708		1,514	24,476			7,075	53,842				52,179	24,670	21,386	7,844	1,077	23,216	31,293	16,811	15,728	17,368	28,503	49,136	21,667	4,740
23-Jun	11,915	37,028	27,496	8,389	38,890		1,514	24,476			7,075	55,318				55,636	24,670	26,505	12,966	1,616	24,852	40,566	23,210	18,113	17,866	34,718	50,564	26,179	1,428
24-Jun	14,787	43,462	27,670	9,930	41,659		9,787	42,231			7,741	84,932				63,106	24,670	31,011	17,086	2,573	30,400	53,849	28,552	21,103	17,866	42,499	54,486	30,746	3,922
25-Jun	18,868	45,639	27,670	11,330	43,961		17,110	55,229			10,934	88,616				70,810	24,670	33,641	20,461	7,209	36,366	65,127	33,615	23,123	17,866	44,210	55,991	34,823	1,504
26-Jun	22,949	48,739	27,670	13,727	45,483		24,419	72,182			16,443	91,072				76,530	26,511	35,773	23,347	10,058	40,975	72,550	39,888	26,734	17,866	51,867	57,905	39,239	1,915
27-Jun	27,030	52,258	27,670	16,093	48,212		29,590	79,898			22,058	91,072				80,990	29,568	38,720	25,582	15,416	45,804	79,325	45,962	32,390	17,888	57,895	64,351	43,171	6,446
28-Jun	31,111	57,510	27,670	18,930	49,490		33,797	79,898			25,084	91,072				84,831	35,665	42,868	27,728	22,065	50,633	86,918	51,354	38,128	18,832	78,513	67,211	47,578	2,860
29-Jun	35,192	65,575	28,748	23,756	51,525		38,143	79,898			26,779	98,717				86,966	41,467	48,063	32,777	29,196	54,242	91,169	55,440	42,781	31,382	95,640	69,045	52,873	1,834
30-Jun	39,273	70,322	53,107	33,827	53,960		42,624	79,898			30,487	102,127				89,501	48,006	54,382	38,689	36,770	58,643	94,203	58,436	49,373	42,726	101,954	70,651	58,915	1,606
1-Jul	45,347	73,288	74,003	38,742	57,520		47,862	85,966			33,888	108,610				92,734	51,160	58,517	42,023	43,172	67,993	97,837	61,322	58,434	55,482	108,059	71,569	65,098	918
2-Jul	48,668	76,519	84,479	44,099	59,799		54,122	103,938			35,981	126,584				93,814	56,227	61,515	45,858	45,336	76,305	102,019	62,848	63,537	75,066	114,288	74,119	71,550	2,550
3-Jul	53,904	84,427	87,781	49,583	62,325		61,387	112,961			37,197	160,994				96,537	62,259	63,453	51,443	48,452	76,305	105,173	63,774	66,561	88,722	119,669	75,856	77,645	1,737
4-Jul	57,474	91,034	91,484	52,799	65,115		67,087	115,310			38,313	196,911				99,056	65,054	64,892	58,362	53,305	76,305	107,829	64,777	68,642	95,873	123,607	76,577	82,661	721
5-Jul	65,386	103,462	93,148	54,428	68,088		71,442	117,760			39,513	224,762				101,438	69,166	67,550	64,793	59,239	76,305	110,460	66,514	70,493	98,807	125,769	78,212	87,426	1,635
6-Jul	71,808	112,996	94,950	58,430	72,111		75,975	117,760			40,914	233,579				103,953	74,438	69,271	68,722	62,785	76,305	112,815	68,813	72,402	103,551	128,432	80,254	91,001	2,042
7-Jul	76,708	121,135	96,888	59,386	78,269		84,488	117,958			42,161	240,891				106,318	79,176	72,042	71,557	64,873	86,686	115,679	73,241	76,285	105,938	131,376	81,948	95,053	1,694
8-Jul	82,695	124,846	98,787	62,048	83,915		97,383	120,535			45,210	243,807				109,093	88,294	75,611	75,379	71,881	96,917	117,828	80,018	78,688	107,844	134,001	84,049	99,739	2,101
9-Jul	88,318	127,743	100,999	67,207	86,687		108,225	126,179			46,974	247,158				111,492	94,159	77,789	78,285	76,646	105,678	122,359	83,125	80,505	109,302	136,749	86,093	103,779	2,044
10-Jul	92,446	130,331	102,498	72,507	89,101		114,224	132,168			49,577	250,162				113,304	100,632	81,564	81,203	81,381	112,694	125,637	87,773	83,185	110,104	139,239	89,150	107,486	3,057
11-Jul	95,831	132,372	108,488	76,123	91,859		118,248	135,632			50,732	255,678				115,573	104,618	85,967	85,121	85,702	117,038	129,162	93,589	87,392	110,617	141,081	91,245	111,041	2,095
12-Jul	100,701	135,214	113,803	80,856	95,701		123,489	140,067			54,206	259,269				117,890	108,888	90,486	89,920	86,278	119,205	131,653	98,109	92,789	111,188	143,075	95,225	114,639	3,980
13-Jul	107,664	138,465	117,481	83,919	99,060		127,566	142,248			56,301	261,891				119,333	115,590	95,442	94,695	86,278	122,817	134,623	101,199	99,578	113,917	143,919	97,400	118,099	2,175
14-Jul	113,685	140,943	120,126	86,826	101,572		130,423	145,873			59,389	264,572				122,672	121,616	100,230	98,327	86,278	126,974	137,057	103,602	109,456	117,312	144,563	99,921	121,575	2,521
15-Jul	118,774	142,782	123,098	90,226	105,320		135,034	147,184			61,634	267,697				124,472	128,259	102,695	100,895	86,278	131,854	139,056	106,100	117,212	120,872	145,924	102,330	124,768	2,409
16-Jul	122,563	144,607	125,835	94,076	109,411		141,289	149,032			66,920	270,225				130,229	104,339	104,774	86,278	137,633	141,815	106,863	124,442	124,421	147,846	104,352	128,202	2,022	
17-Jul	128,444	147,528	130,458	98,726	112,961		147,389	150,546			72,272	276,077				130,616	133,526	108,093	108,037	86,278	142,705	144,316	107,740	128,465	126,835	150,714	107,380	131	

Nass Cumulative Adult Chinook Run Size to Gitwinksihlkw Fishwheels - 1994-2014																					IN-SEASON					
Date	1994	1995	1996	1997	1998	1999	2000	2001	2002	2003	2004	2005	2006	2007	2008	2009	2010	2011	2012	2013	2014 Cum	Mean (94-13)	2014 Daily			
5-Jun-14			146	264																	131	205	131			
6-Jun-14			146	264									14		23		487		24	0	272	205	140			
7-Jun-14	24		146	264				23					72		69		548		24	17	482	205	210			
8-Jun-14	36	39	146	373		10		168					72	47	115		731		24	50	798	205	316			
9-Jun-14	120	78	146	555		79		306					72	141	138		914		47	67	938	205	140			
10-Jun-14	347	248	146	883		148		345					72	157	208		974		71	67	1,078	306	140			
11-Jun-14	765	248	390	1,147		178		352					16	101	600		1,218	21	71	84	1,359	382	281			
12-Jun-14	1,052	248	1,073	1,429	42	178	32	559					49	173	669		1,279	105	95	134	1,815	455	456			
13-Jun-14	1,124	248	1,560	1,621	249	178	32	1,248					98	404	669		1,523	211	102	167	2,236	600	421			
14-Jun-14	1,219	287	2,227	1,903	769	178	32	1,409					31	147	715		1,644	211	126	301	2,657	698	421			
15-Jun-14	1,387	391	2,779	2,149	1,184	178	32	1,471					279	245	738		1,827	211	134	318	2,972	825	316			
16-Jun-14	1,961	600	3,283	2,340	1,600	178	161	1,731					1,164	636	854	159	2,497	274	142	318	3,148	986	175			
17-Jun-14	2,977	887	3,478	2,367	3,366	178	850	2,252					2,513	1,908	1,141	157	37	1,223	319	2,741	463	142	351	3,569	1,439	421
18-Jun-14	3,873	1,278	3,787	2,522	7,044	178	1,410	2,903					5,042	3,946	2,065	157	37	1,315	546	3,350	611	142	485	3,990	2,142	421
19-Jun-14	5,176	2,100	3,982	3,041	11,262	178	2,013	3,209					6,035	4,386	2,628	173	37	1,730	865	4,080	716	300	619	4,305	2,765	316
20-Jun-14	6,180	3,027	4,519	4,043	13,381	178	2,928	3,278					7,059	4,418	2,859	361	37	2,169	1,275	5,055	884	457	686	4,621	3,305	316
21-Jun-14	7,472	3,822	4,876	4,816	14,628	178	4,188	3,278	866	11,838	4,418	3,148	896	86	2,630	2,345	6,638	969	457	686	4,831	3,912	210			
22-Jun-14	8,930	4,201	4,892	6,000	15,417	237	5,480	3,278	2,553	16,771	4,418	3,725	1,760	86	2,884	4,486	8,465	1,242	489	719	5,252	4,802	421			
23-Jun-14	10,185	4,553	4,957	6,701	16,685	465	7,450	3,278	4,421	18,974	4,418	4,592	3,285	210	2,884	6,740	9,927	1,390	505	803	5,322	5,621	70			
24-Jun-14	10,448	5,075	4,990	7,120	17,287	871	9,452	3,286	5,816	20,510	4,418	6,122	5,359	1,479	3,115	11,112	11,327	1,579	520	837	5,579	6,536	256			
25-Jun-14	10,448	5,688	4,990	7,384	18,201	1,662	11,659	3,692	6,144	21,240	4,418	7,826	9,665	1,886	3,484	15,393	12,606	1,853	528	937	5,812	7,485	233			
26-Jun-14	10,448	6,471	4,990	7,730	19,490	2,454	12,746	6,380	6,354	21,519	4,418	9,270	12,557	2,614	4,476	15,917	13,824	2,169	544	1,054	5,954	8,271	143			
27-Jun-14	10,508	6,953	4,990	7,921	20,383	2,820	12,972	9,827	6,354	21,798	4,484	9,949	13,028	3,921	5,768	16,691	14,981	2,695	552	1,104	6,515	8,885	561			
28-Jun-14	10,819	7,175	4,990	8,340	20,965	3,038	12,972	10,546	6,354	22,093	4,516	10,454	13,138	5,203	6,875	20,106	15,834	3,138	552	1,221	7,147	9,417	631			
29-Jun-14	11,524	7,488	5,055	10,106	21,464	3,226	12,972	10,738	8,168	22,512	4,908	11,003	13,594	5,573	7,291	22,178	16,443	3,432	552	1,238	7,575	9,973	428			
30-Jun-14	13,317	7,684	7,184	12,228	21,858	4,166	12,972	11,067	9,864	22,776	5,658	11,249	16,297	6,078	7,498	23,544	16,626	3,811	552	1,389	7,962	10,786	387			
1-Jul-14	15,780	7,880	10,988	13,703	22,128	5,353	13,134	13,495	10,821	22,900	6,130	11,494	19,346	6,189	8,029	24,205	16,748	4,275	552	1,506	8,268	11,733	306			
2-Jul-14	17,191	7,958	14,515	14,786	22,315	6,659	13,747	19,538	11,933	22,915	7,370	11,711	21,420	6,436	8,813	24,729	16,808	4,717	568	3,079	8,574	12,860	306			
3-Jul-14	17,980	8,101	16,384	16,516	22,419	7,876	14,727	24,501	12,544	23,117	9,163	12,028	22,426	7,681	8,813	24,956	16,991	5,138	828	5,287	8,726	13,874	151			
4-Jul-14	18,900	8,245	19,099	17,472	22,502	8,292	15,244	25,688	13,291	23,427	10,761	12,360	23,008	11,972	8,813	25,389	17,113	5,812	1,135	6,592	8,726	14,756	0			
5-Jul-14	20,335	8,480	20,269	17,964	22,523	8,539	15,405	26,110	13,829	23,877	12,408	12,635	23,542	13,291	8,813	25,845	17,113	6,844	1,506	7,061	8,828	15,319	102			
6-Jul-14	21,530	8,727	20,691	18,282	22,627	8,747	15,405	26,393	14,385	24,637	13,337	12,649	23,794	13,525	8,813	26,095	17,235	7,412	2,578	7,479	9,424	15,717	596			
7-Jul-14	21,972	9,014	21,017	18,364	22,960	9,202	15,416	26,860	14,786	25,211	13,386	12,707	24,061	15,929	8,859	26,232	17,296	8,255	4,233	7,646	9,634	16,170	210			
8-Jul-14	22,104	9,458	21,277	18,428	23,271	9,855	15,545	29,418	15,051	25,956	13,467	13,010	24,124	19,813	9,875	26,345	17,722	8,444	5,574	8,115	9,880	16,843	246			
9-Jul-14	22,188	9,562	21,683	18,583	23,666	10,211	15,911	30,008	15,124	26,189	13,630	13,487	24,249	21,884	12,228	26,550	17,905	8,613	6,062	8,684	10,231	17,321	351			
10-Jul-14	22,522	9,654	21,683	18,847	23,874	10,528	16,406	30,958	15,224	26,406	13,859	14,079	24,375	23,117	15,804	26,755	18,026	8,739	6,819	8,935	10,441	17,830	210			
11-Jul-14	22,797	9,732	21,732	19,111	24,019	10,894	16,826	31,379	15,279	26,530	14,169	14,526	24,595	23,179	18,157	26,960	18,148	8,971	7,434	9,219	10,581	18,183	140			
12-Jul-14	23,048	9,771	21,959	19,521	24,144	11,349	18,161	32,221	15,306	26,654	14,690	14,728	25,145	23,179	19,195	27,006	18,270	9,118	7,671	9,286	11,072	18,521	491			
13-Jul-14	23,132	9,849	22,268	19,748	24,227	11,636	18,753	32,681	15,370	26,732	15,342	14,858	26,072	23,179	19,357	27,074	18,392	9,223	7,789	9,387	11,213	18,754	140			
14-Jul-14	23,192	9,889	22,577	19,858	24,289	11,864	19,345	32,911	15,406	26,840	15,783	15,017	26,670	23,179	19,518	27,302	18,453	9,392	7,797	9,420	11,294	18,935	82			
15-Jul-14	23,240	9,915	22,756	19,894	24,331	12,032	19,582	32,987	15,443	26,996	15,946	15,104	26,842	23,179	19,841	27,530	18,575	9,476	7,797	9,504	11,335	19,048	41			
16-Jul-14	23,264	9,954	22,853	19,958	24,393	12,121	19,776	33,148	15,452	27,058	16,027	15,133	26,952	23,179	20,049	27,552	18,575	9,560	7,797	9,520	11,355	19,116	20			
17-Jul-14	23,264	10,006	22,918	19,994	24,414	12,200	19,970	33,317	15,507	27,213	16,027	15,219	27,157	23,179	20,164	27,757	18,635	9,687	7,805	9,537	11,355	19,198	0			
18-Jul-14	23,347	10,071	23,000	20,058	24,414	12,269	20,013	33,508	15,534	27,476	16,092	15,277	27,235	23,290	20,234	27,871	18,635	9,813	7,915	9,587	11,426	19,282	70			
19-Jul-14	23,383	10,110	23,065	20,058	24,456	12,348	20,077	33,608	15,543	27,709	16,174	15,364	27,361	23,376	20,280	27,962	18,757	9,939	7,994	9,604	11,466	19,358	41			
20-Jul-14	23,503	10,149	23,162	20,067	24,476	12,408	20,153	33,654	15,580	27,926	16,223	15,407	27,392	23,549	20,303	28,030	18,757	10,024	8,018	9,604	11,487	19,419	20			
21-Jul-14	23,586	10,202	23,178	20,094	24,518	12,447	20,163	33,650	15,607	28,082	16,272	15,479	27,487	23,869	20,349	28,167	18,940	10,150	8,025	9,621	11,522	19,495	35			
22-Jul-14	23,634	10,215	23,243	20,103	24,559	12,457	20,163	33,654	15,625	28,159	16,288	15,479	27,534	24,264	20,395	28,327	19,001	10,276	8,120	9,704	11,697	19,560	175			
23-Jul-14	23,694	10,215	23,260	20,113	24,601	12,546	20,339	33,654	15,671	28,268	16,304	15,595	27,534	24,707	20,418	28,440	19,001	10,339	8,286	9,738	11,838	19,631	140			
24-Jul-14	23,766	10,215	23,292	20,167	24,622	12,556	20,325	33,700	15,680	28,361	16,386	15,624	27,550	25,090	20,418	28,486	19,001	10,403	8,609	9,755	11,873	19,700	35			
25-Jul-14	23,766	10,241	23,325	20,167	24,643	12,616	20,368	33,769	15,707	28,438	16,516	15,653	27,550	25,558	20,464	28,509	19,001	10,466	9,082	9,771	11,873	19,780	0			
26-Jul-14	23,778	10,241	23,373	20,185	24,663	12,665	20,411	33,																		

Nass Coho Cumulative Run Size Estimate past Gitwinkshikw - 1994-2014																					In-season	Mean Cum	Daily
Date	1994	1995	1996	1997	1998	1999	2000	2001	2002	2003	2004	2005	2006	2007	2008	2009	2010	2011	2012	2013	2014	(94-13)	2014
9-Jul-14	-	-	-	-	-	-	-	-	-	-	-	-	-	-	-	-	-	-	-	-	-	0	0
10-Jul-14	-	-	-	-	-	-	-	-	-	-	-	-	-	-	-	-	-	-	-	-	-	0	0
11-Jul-14	-	-	-	-	-	-	-	-	-	-	-	19	-	-	-	-	-	-	-	-	30	0	2
12-Jul-14	-	-	-	-	-	-	-	-	-	32	-	39	-	-	16	32	-	-	-	-	30	0	7
13-Jul-14	-	-	-	-	-	-	-	-	-	32	16	39	-	-	33	32	-	-	-	-	30	0	9
14-Jul-14	-	-	-	-	-	-	-	-	33	63	16	39	-	-	33	64	-	-	-	-	119	0	18
15-Jul-14	-	23	-	-	-	-	-	-	33	127	32	39	-	-	49	64	47	-	-	-	119	0	28
16-Jul-14	-	23	20	-	-	-	-	-	33	190	65	39	29	-	66	64	71	-	-	-	238	0	42
17-Jul-14	-	45	20	-	-	-	-	-	66	190	113	96	72	-	99	159	95	-	-	-	565	21	76
18-Jul-14	-	90	40	-	-	-	25	-	66	190	161	116	173	-	99	222	142	239	26	891	41	124	21
19-Jul-14	-	113	40	-	-	-	51	-	66	317	210	154	288	-	165	318	284	342	38	1,337	82	186	41
20-Jul-14	-	181	40	-	22	-	101	-	66	412	403	193	447	25	329	477	332	512	64	1,723	164	264	82
21-Jul-14	26	226	40	-	22	-	101	-	265	508	500	193	562	25	379	699	474	649	103	2,110	506	344	342
22-Jul-14	52	249	80	-	45	-	127	-	563	698	629	251	634	25	461	1,048	616	820	115	2,912	813	466	307
23-Jul-14	52	249	139	-	89	31	152	-	629	1,301	742	771	778	25	692	1,557	711	1,195	205	3,536	1,496	643	683
24-Jul-14	52	249	199	14	111	31	202	-	795	1,777	1,161	1,041	908	99	972	2,065	876	1,400	231	4,398	2,316	829	820
25-Jul-14	52	316	339	28	178	124	228	49	894	2,411	1,629	1,368	1,124	669	1,334	2,383	1,066	1,571	384	5,259	2,999	1,070	683
26-Jul-14	79	339	637	113	356	140	329	81	1,060	2,982	2,000	1,657	1,427	818	1,647	3,145	1,350	1,912	449	6,091	4,194	1,331	1,195
27-Jul-14	210	475	896	141	668	233	405	146	1,226	3,427	2,807	1,869	1,657	1,065	2,009	4,670	1,918	2,356	564	7,102	5,287	1,692	1,093
28-Jul-14	603	497	1,374	340	868	295	658	211	1,755	4,347	3,404	2,197	2,118	1,462	2,503	6,259	2,416	2,698	730	8,439	7,609	2,159	2,322
29-Jul-14	917	497	2,071	382	1,202	326	759	454	2,451	5,172	3,968	2,525	2,997	1,635	2,767	7,816	3,363	3,074	987	10,014	9,624	2,669	2,015
30-Jul-14	1,598	497	2,569	566	1,625	528	1,088	908	3,875	6,123	4,662	2,737	3,703	2,478	3,508	8,673	4,216	4,098	1,333	11,707	10,671	3,325	1,047
31-Jul-14	2,175	610	3,107	849	2,025	1,243	1,493	1,557	4,736	7,361	5,711	3,373	4,640	2,998	4,249	10,897	6,111	5,225	1,833	14,144	12,066	4,217	1,396
1-Aug-14	2,437	678	3,605	990	2,626	2,052	2,100	2,432	5,664	8,122	6,904	4,221	5,879	3,791	5,188	12,708	7,437	6,352	2,755	15,957	15,823	5,095	3,757
2-Aug-14	3,144	746	4,660	1,217	3,116	2,782	2,733	3,713	6,790	9,233	7,840	4,741	7,537	4,683	5,912	15,155	9,877	8,708	3,742	18,512	19,636	6,242	3,813
3-Aug-14	3,485	768	5,118	1,344	3,672	3,933	5,365	4,945	8,678	11,295	8,421	5,338	8,891	5,426	7,049	23,225	13,074	10,587	4,793	23,415	27,034	7,941	7,398
4-Aug-14	3,747	1,039	6,114	1,556	4,429	4,554	12,830	6,275	11,394	13,104	9,824	5,705	10,606	6,169	8,762	30,310	16,461	12,328	5,754	27,872	33,161	9,942	6,127
5-Aug-14	3,799	1,333	7,309	1,585	4,830	5,534	16,778	7,459	13,315	14,309	11,308	6,379	12,047	7,433	11,298	40,159	20,061	13,285	6,831	32,924	37,076	11,899	3,915
6-Aug-14	6,943	1,559	8,862	1,783	5,564	6,000	20,296	8,237	14,607	16,879	13,776	6,957	13,949	8,399	13,982	46,989	23,330	14,275	8,676	35,954	41,322	13,851	4,246
7-Aug-14	9,668	2,983	10,017	1,967	5,898	6,730	26,218	9,761	15,865	19,290	14,373	8,210	15,505	9,192	16,897	53,280	26,006	15,641	11,201	38,956	55,883	18,992	5,195
8-Aug-14	11,004	4,338	11,053	2,391	6,677	7,554	30,520	12,809	17,886	21,892	16,922	9,540	16,990	10,282	19,137	57,093	28,588	16,632	14,405	42,818	60,727	20,169	6,127
9-Aug-14	13,913	5,513	12,387	2,901	7,367	9,078	33,202	17,285	18,648	24,272	20,261	11,236	18,820	11,620	22,069	60,301	33,348	17,485	16,814	46,860	67,997	22,579	7,195
10-Aug-14	21,930	6,304	12,925	3,311	7,701	10,430	36,745	20,998	20,238	26,461	23,262	12,835	21,024	12,883	24,589	63,606	36,546	18,305	18,916	52,565	75,541	25,764	8,195
11-Aug-14	38,882	6,711	14,538	3,820	8,368	11,969	39,301	24,370	23,715	29,538	26,133	14,839	22,538	14,692	28,591	66,910	40,075	18,988	24,183	57,111	82,287	28,772	9,195
12-Aug-14	52,559	7,276	15,792	4,089	8,880	14,456	41,047	29,689	28,021	32,553	27,537	16,593	24,411	16,699	31,802	69,166	43,533	19,910	29,232	62,192	87,469	31,475	10,195
13-Aug-14	62,044	8,677	16,947	4,471	9,882	15,777	42,363	35,331	31,797	34,837	30,037	18,597	26,803	18,929	33,680	74,249	47,322	20,969	32,308	64,480	90,964	34,045	11,195
14-Aug-14	70,926	9,694	17,585	4,726	10,372	16,989	43,452	38,963	35,142	38,327	32,957	21,970	29,195	20,737	34,684	78,538	51,538	21,754	35,666	67,689	95,929	36,719	12,195
15-Aug-14	77,214	10,914	18,341	5,136	10,750	17,937	44,287	43,503	42,429	41,373	35,441	26,114	32,668	22,447	35,771	83,780	54,215	22,847	38,280	70,928	99,929	37,719	13,195
16-Aug-14	83,686	11,614	19,178	6,424	12,842	19,336	45,071	47,168	52,598	44,958	37,344	27,944	35,693	24,553	37,912	89,976	56,891	23,120	41,035	73,276	101,108	38,719	14,195
17-Aug-14	90,184	12,631	20,413	7,174	15,646	20,533	45,982	49,778	60,150	46,957	39,248	32,589	37,582	25,643	39,279	96,393	61,320	24,384	42,676	76,782	103,327	39,719	15,195
18-Aug-14	96,786	13,038	20,950	7,471	17,560	21,963	47,323	52,243	66,641	49,114	40,764	36,867	39,498	26,931	41,832	102,938	64,778	26,125	44,662	79,664	105,327	40,719	16,195
19-Aug-14	100,454	13,670	22,304	7,881	19,052	22,974	48,589	55,486	71,842	51,843	42,716	41,242	41,905	27,625	44,697	108,308	68,141	27,252	46,610	81,417	106,346	41,719	17,195
20-Aug-14	105,590	14,348	25,112	8,164	21,722	24,170	49,525	57,594	76,015	54,952	45,588	42,822	44,427	29,607	47,629	113,073	71,173	28,106	48,366	83,884	107,465	42,719	18,195
21-Aug-14	110,751	14,981	26,387	8,490	23,503	25,414	49,981	58,988	79,592	58,125	48,637	43,497	46,386	31,540	51,153	117,553	72,689	28,721	50,006	89,203	108,584	43,719	19,195
22-Aug-14	116,280	15,410	28,836	8,872	24,771	26,486	50,132	60,237	80,652	60,536	51,121	45,520	47,712	33,299	57,922	123,907	73,399	28,721	52,133	92,441	109,703	44,719	20,195
23-Aug-14	120,262	15,614	29,673	9,084	25,706	28,803	50,132	62,426	82,606	62,757	52,186	51,745	48,519	34,736	61,644	129,594	73,968	28,721	53,915	96,483	110,822	45,719	21,195
24-Aug-14	126,000	16,743	30,609	9,594	26,686	30,248	50,487	63,820	83,931	65,232	53,363	57,527	49,052	36,123	64,444	136,044	74,773	29,131	55,094	100,108	111,941	46,719	22,195
25-Aug-14	127,913	17,557	32,361	10,103	27,197	32,160	51,550	65,506	87,608	66,914	54,170	60,977	49,686	36,991	64,741	140,682	76,241	30,599	56,260	103,436	113,060	47,719	23,195
26-Aug-14	129,013	18,551	33,696	10,513	27,976	33,947	51,980	67,112	94,431	68,817	54,734	63,848	50,248	38,229	65,613	149,388	77,189	33,980	57,016	105,605	114,179	48,719	24,195
27-Aug-14	131,869	19,568	35,368	10,726	28,533	35,782	52,638	67,112	98,041	69,928	55,363	68,377	50,767	39,468	68,413	155,932	77,970	37,942	57,862	107,536	115,298	49,719	25,195
28-Aug-14	133,022	20,110	36,543	10,980	29,379	36,605	54,080	67,339	99,134	70,975	55,863	72,771	51,171	40,781	72,086	161,079	78,515	42,894	58,554	110,092	116,417	50,719	26,195
29-Aug-14	135,118	20,562	37,519	11,093	30,069	38,269	58,129	70,079	99,962	72,434	56,718	75,431	51,603	41,450	74,523	166,925	79,155	46,138	59,323	112,350	117,539	51,719	27,195
30-Aug-14	136,507	20,856	38,475	11,702	30,380	40,585	60,73																

Nass Summer Run Steelhead Cumulative Run Size Estimates past Gitwinksihkw - 1994-2014																				INSEASO	Mean Cum	Daily		
Date	1994	1995	1996	1997	1998	1999	2000	2001	2002	2003	2004	2005	2006	2007	2008	2009	2010	2011	2012	2013	2014	(94-13)	2014	
1-Jul-14	0	0	39	0	0	0	0	0	0	0	0	0	0	0	0	0	0	0	0	0	0	0	2	
2-Jul-14	0	0	39	0	0	0	0	0	0	0	0	0	0	0	0	0	0	0	0	0	0	0	2	
3-Jul-14	0	0	39	0	0	0	0	0	0	0	0	0	0	0	0	0	0	0	24	0	0	0	3	
4-Jul-14	45	0	39	0	0	0	0	0	0	0	0	0	0	0	0	0	0	113	48	0	0	0	12	
5-Jul-14	45	0	39	0	0	0	0	0	0	0	0	0	0	0	0	0	0	113	48	0	0	0	12	
6-Jul-14	45	0	39	0	0	0	0	0	0	0	0	0	0	0	0	0	0	113	48	0	0	0	12	
7-Jul-14	45	0	39	0	53	0	0	0	0	0	0	0	0	0	0	0	0	113	72	0	0	41	16	41
8-Jul-14	45	0	39	0	53	0	0	0	0	0	0	0	0	66	0	0	0	113	72	0	0	41	19	0
9-Jul-14	45	0	39	0	53	0	0	0	0	0	0	0	0	66	0	0	0	113	72	0	0	41	19	0
10-Jul-14	45	0	39	0	53	0	31	0	0	0	0	0	0	99	0	0	0	113	72	0	0	41	23	0
11-Jul-14	45	0	39	0	53	29	31	0	0	0	0	0	0	99	0	0	0	113	72	0	0	41	24	0
12-Jul-14	45	78	39	0	107	29	31	0	0	0	0	0	0	99	0	0	0	113	72	0	0	81	31	41
13-Jul-14	45	78	39	0	267	29	31	0	0	0	0	0	0	99	0	0	0	113	72	0	0	105	39	24
14-Jul-14	45	78	39	0	267	29	31	28	0	0	0	40	0	99	0	0	0	113	72	0	0	154	42	49
15-Jul-14	45	78	39	0	267	29	31	28	0	0	0	40	0	99	0	0	0	113	72	0	0	179	42	24
16-Jul-14	45	78	78	0	267	29	62	28	0	0	0	40	29	99	0	0	0	113	169	72	0	179	53	0
17-Jul-14	45	78	117	0	267	29	155	56	52	0	0	40	29	99	0	0	74	169	72	0	179	64	0	
18-Jul-14	134	78	117	0	267	29	155	56	52	0	0	81	29	132	80	0	74	282	72	0	203	82	24	
19-Jul-14	134	78	157	0	267	29	155	56	52	0	18	81	29	132	120	0	147	394	72	0	203	96	0	
20-Jul-14	223	78	157	27	267	29	155	56	52	0	36	81	29	132	120	0	147	451	72	0	203	105	0	
21-Jul-14	223	78	196	27	320	29	155	56	52	0	54	81	57	132	120	0	294	451	72	0	243	120	41	
22-Jul-14	268	156	196	27	373	59	155	56	52	59	54	161	57	132	161	0	441	451	95	50	365	150	122	
23-Jul-14	268	156	235	27	426	59	186	56	103	59	54	242	57	132	241	50	515	620	95	100	649	184	284	
24-Jul-14	446	156	313	27	426	59	309	56	155	177	71	242	57	132	321	100	662	732	143	150	811	237	162	
25-Jul-14	490	235	391	53	426	88	309	83	206	412	71	282	86	132	482	100	662	845	167	250	1,054	289	243	
26-Jul-14	535	235	470	159	586	88	371	111	206	766	89	282	86	132	602	199	809	845	215	250	1,257	352	203	
27-Jul-14	580	313	509	159	693	147	371	167	258	825	179	322	86	132	723	299	1,029	1,070	238	300	1,460	420	203	
28-Jul-14	713	313	548	186	853	176	433	194	361	1,061	197	322	86	132	883	448	1,250	1,239	262	400	1,622	503	162	
29-Jul-14	803	391	548	186	960	176	464	278	567	1,355	268	322	143	132	964	648	1,323	1,352	262	650	1,744	590	122	
30-Jul-14	803	469	587	265	1,226	235	526	305	928	1,650	286	322	171	132	1,205	698	1,397	1,352	358	750	1,768	683	24	
31-Jul-14	892	469	626	345	1,279	323	680	389	1,288	1,945	322	363	228	198	1,405	698	1,617	1,408	405	800	1,865	784	97	
1-Aug-14	892	469	705	398	1,439	352	742	444	1,598	2,121	447	564	228	231	1,526	698	1,838	1,465	548	800	2,149	875	284	
2-Aug-14	1,025	548	744	398	1,493	381	835	916	2,010	2,770	554	645	257	231	1,726	698	2,058	1,521	715	800	2,505	1,016	356	
3-Aug-14	1,293	704	783	425	1,599	470	1,206	1,055	2,113	2,887	643	685	285	264	1,927	897	2,352	1,690	930	800	3,039	1,150	534	
4-Aug-14	1,471	704	940	531	1,919	499	1,825	1,194	2,319	3,064	786	685	314	362	1,967	1,296	2,352	1,803	1,096	800	3,242	1,296	203	
5-Aug-14	1,471	704	1,488	611	2,026	558	2,443	1,194	2,731	3,418	894	725	371	428	2,329	1,694	2,646	1,915	1,168	800	3,522	1,481	280	
6-Aug-14	1,561	704	1,840	690	2,132	587	2,752	1,222	2,835	3,595	983	846	542	560	2,449	1,844	2,720	1,972	1,335	850	3,903	1,601	381	
7-Aug-14	1,605	861	2,114	823	2,239	587	3,154	1,333	2,886	3,889	1,001	886	684	626	2,690	2,641	2,867	2,084	1,525	850		1,767		
8-Aug-14	1,650	861	2,192	929	2,346	587	3,402	1,555	3,144	4,243	1,108	1,047	770	659	2,811	3,139	2,867	2,479	1,859	950		1,930		
9-Aug-14	1,694	861	2,349	1,062	2,346	734	4,113	2,083	3,298	4,832	1,162	1,128	798	725	2,891	3,986	3,234	2,704	2,026	1,151		2,159		
10-Aug-14	1,694	861	2,819	1,141	2,559	822	4,639	2,277	3,298	5,421	1,448	1,208	913	824	2,971	4,435	3,676	2,929	2,288	1,351		2,379		
11-Aug-14	2,096	1,017	3,132	1,327	2,559	998	5,319	2,583	3,350	6,011	1,644	1,249	970	889	3,132	4,584	4,264	3,437	2,646	1,451		2,633		
12-Aug-14	2,185	1,017	3,289	1,460	2,772	1,232	5,690	3,027	3,556	6,482	1,752	1,329	1,055	1,087	3,212	4,584	4,484	3,718	3,218	1,551		2,835		
13-Aug-14	2,274	1,252	3,289	1,672	2,879	1,438	5,999	3,305	3,814	6,895	1,895	1,450	1,169	1,219	3,292	5,581	4,705	3,944	3,480	1,651		3,060		
14-Aug-14	2,318	1,330	3,328	1,725	2,879	1,643	6,370	3,416	3,917	7,425	2,216	1,571	1,226	1,318	3,292	6,528	5,587	4,225	3,957	1,651		3,296		
15-Aug-14	2,408	1,408	3,328	1,778	2,985	1,937	6,649	3,693	3,917	7,720	2,431	1,571	1,283	1,515	3,373	7,325	5,954	4,394	4,648	1,651		3,498		
16-Aug-14	2,408	1,408	3,445	2,177	3,092	2,348	6,989	3,888	4,329	7,955	2,467	1,611	1,369	1,812	3,493	7,723	6,542	4,451	5,148	1,701		3,718		
17-Aug-14	2,452	1,487	3,680	2,336	3,412	2,670	7,144	4,249	5,102	8,427	2,610	1,611	1,511	2,042	3,654	8,371	6,910	4,451	5,625	1,751		3,975		
18-Aug-14	2,898	1,487	3,798	2,575	3,678	2,846	7,360	4,360	5,721	8,545	2,735	1,893	1,625	2,174	3,774	9,468	7,131	4,451	6,030	2,001		4,227		
19-Aug-14	2,943	1,487	3,876	2,973	4,051	2,964	7,546	4,693	6,030	8,662	2,806	1,934	1,854	2,240	4,176	9,966	7,278	4,563	6,555	2,001		4,430		
20-Aug-14	2,943	1,487	4,228	3,132	4,371	3,257	7,855	4,887	6,288	9,193	2,896	1,934	2,025	2,273	4,858	10,265	7,425	4,676	6,888	2,101		4,649		
21-Aug-14	2,987	1,565	4,346	3,637	5,064	3,433	8,071	5,276	6,751	9,841	3,003	1,934	2,281	2,438	5,179	10,364	7,792	4,676	7,270	2,101		4,900		
22-Aug-14	3,255	1,643	4,385	4,194	5,575	3,756	8,102	5,554	7,061	10,312	3,217	1,934	2,395	2,504	5,942	11,062	8,086	4,676	7,556	2,351		5,187		
23-Aug-14	3,433	1,643	4,463	4,698	6,290	3,962	8,102	5,693	7,215	10,607	3,343	2,336	2,567	2,701	6,585	12,059	8,160	4,676	7,842	2,701		5,454		
24-Aug-14	3,701	1,800	4,541	5,176	6,770	4,255	8,102	6,193	7,215	11,373	3,396	2,780	2,795	2,833	7,347	12,407	8,601	4,789	8,128	3,101		5,765		
25-Aug-14	4,013	1,956	4,620	5,362	6,930	4,372	8,226	6,554	7,267	11,903	3,450	3,142	2,937	2,998	7,347	13,055	8,895	4,958	8,390	3,201		5,979		
26-Aug-14	4,414	2,269	4,776	5,893	6,930	4,666	8,257	6,942	7,679	12,198	3,611	3,263	3,023	3,129	7,347	13,404	9,189	5,070	8,533	3,301		6,195		
27-Aug-14	4,548	2,347	5,638	6,132	7,196	4,725	8,319	6,942	7,988	12,669	3,772	3,666	3,051	3,195	7,548	13,703	9,924	5,972	8,795	3,502		6,482		
28-Aug-14	4,726	2,426	6,303	6,450	7,356	4,842	8,350	6,942	8,040	13,082	3,843	3,827	3,194	3,294	8,191	14,151	10,071	7,098	8,962	3,702		6,743	</	

2014 Nass Fishwheel Catches

	GW		GW Total	GH				GH Total	Grand Total
Data	FW1	FW2		FW3	FW4	FW5	FW6		
Chin-adult catch	95	321	416	322	110	493	313	1,238	1,654
Chin-tagged	83	294	377	291	88	424	269	1,072	1,449
Chin-recaps	6	9	15	25	27	89	56	197	212
Chin-Jacks	75	146	221	119	114	245	228	706	927
Sum of CH Harv	0	0	0	0	0	0	0	0	0
Sockeye-adult catch	2,929	6,212	9,141	5,231	1,110	8,332	4,807	19,480	28,621
Sockeye-tagged	2,213	3,878	6,091	0	0	0	0	0	6,091
Sockeye-recaps	164	131	295	180	63	359	183	785	1080
Sockeye_jacks	430	1353	1783	396	477	1080	701	2654	4437
Sum of Sk Harv	0	0	0	1241	378	2103	1188	4910	4910
Coho-adult catch	845	672	1,517	341	37	915	441	1,734	3,251
Coho-tagged	654	590	1,244	0	0	0	0	0	1,244
Coho-recaps	52	40	92	3	0	45	23	71	163
Coho-jack	10	12	22	21	1	59	23	104	126
Sum of CO Harv	0	0	0	45	30	143	64	282	282
Steel-adult catch	55	81	136	33	6	42	22	103	239
Steel-Adipose marked	52	68	120	31	6	38	22	97	217
Steel-unmarked	3	13	16	2	0	4	0	6	22
Steel-recap-total	6	3	9	3	0	5	3	11	20
Pacific Lamprey-catch	27	64	91	38	25	137	173	373	464
Lamprey-tagged	19	46	65	19	18	82	137	256	321
Lamprey-released	8	18	26	19	7	55	36	117	143
Lamprey-recaps	0	0	0	0	1	5	9	15	15
River Lamprey	0	1	1	0	0	3	0	3	4
Pink-adult-catch	2215	2918	5133	898	59	1404	393	2754	7887
Chum-adult-catch	9	5	14	4	0	0	0	4	18
Chum-tagged	9	6	15	4	0	0	0	4	19
Chum-punched	0	0	0	0	0	0	0	0	0
Chum-recaps	0	1	1	0	0	0	0	0	1
Dolly Varden	20	49	69	2	1	4	1	8	77
Pike Minnow	1	0	1	18	0	19	14	51	52
Whitefish sp.	2	12	14	5	2	13	9	29	43
Rainbow Trout	15	12	27	7	0	2	6	15	42
Peamouth Chub	0	0	0	5	1	8	9	23	23
Red-Side Shiner	0	2	2	2	0	2	0	4	6
Sucker	0	0	0	3	0	2	0	5	5
Sculpin	4	0	4	0	0	0	0	0	4
Cutthroat sp.	0	0	0	0	0	0	0	0	0
Sum of chin_smolt	10	2	12	0	1	1	4	6	18
Sum of co_smolt	43	15	58	4	1	10	1	16	74
Sum of sk_smolt	16	0	16	0	2	1	0	3	19

Chinook (GW wheels only)																					Cum		
Week Ending (Sat)	Stat wk	1994	1995	1996	1997	1998	1999	2000	2001	2002	2003	2004	2005	2006	2007	2008	2009	2010	2011	2012	2013	2014	94-13 Cum Mean
31-May	22																						0
7-Jun	23			9	29												0	4		3	0		15
14-Jun	24		94	19	96	178		18	163			6	28	10		0	29		0	21	0	58	
21-Jun	25		517	232	278	444	644	18	272	428		455	271	198	23	3	94	56	67	10	70	139	
28-Jun	26		879	533	307	870	981	285	1,205	1,283	697	1,405	275	689	829	318	250	733	227	59	144	316	
5-Jul	27		1,581	632	1,175	1,919	1,083	838	1,416	3,354	1,458	1,510	660	856	1,464	971	382	1,118	279	163	943	574	
12-Jul	28		1,907	746	1,337	2,099	1,156	1,101	1,563	4,097	1,676	1,710	869	1,006	1,565	1,880	787	1,187	296	352	1,004	530	
19-Jul	29		1,953	772	1,415	2,203	1,175	1,240	1,859	4,375	1,704	1,771	987	1,058	1,733	1,889	877	1,227	306	438	1,152	583	
26-Jul	30		1,988	785	1,435	2,215	1,186	1,275	1,892	4,409	1,723	1,833	1,013	1,084	1,753	2,073	887	1,255	312	476	1,265	591	
2-Aug	31		1,998	787	1,448	2,224	1,189	1,297	1,908	4,478	1,735	1,861	1,032	1,095	1,767	2,148	898	1,271	316	502	1,319	595	
9-Aug	32		2,005	789	1,463	2,243	1,198	1,315	1,961	4,500	1,743	1,877	1,050	1,108	1,784	2,156	907	1,298	322	515	1,340	601	
16-Aug	33		2,011	794	1,467	2,254	1,200	1,337	1,991	4,520	1,749	1,888	1,081	1,144	1,797	2,171	913	1,311	330	521	1,355	602	
23-Aug	34		2,018	796	1,476	2,277	1,204	1,349	2,001	4,525	1,757	1,891	1,095	1,121	1,812	2,182	919	1,319	332	526	1,364	606	
30-Aug	35		2,029	797	1,482	2,284	1,213	1,353	2,004	4,529	1,757	1,896	1,102	1,145	1,817	2,190	932	1,329	333	527	1,367	610	
6-Sep	36		2,031	799	1,487	2,287	1,216	1,356	2,007	4,530	1,763	1,899	1,103	1,151	1,821	2,196	940	1,330	334	528	1,368	612	
13-Sep	37				1,489	2,290	1,220	1,357	2,007	4,531	1,764			1,157	1,821	2,201	940	1,332	337	541	1,368	612	
20-Sep	38				1,489				2,008					1,161	1,821	2,204	940		340	542		1,538	
27-Sep	39								2,008							2,204	940		340	545		1,538	
Grand Total		2031	799	1489	2287	1220	1357	2008	4531	1764	1899	1103	1161	1821	2204	940	1332	340	545	1368	612	416	1,538
Sockeye (GW wheels only)																							
Week Ending (Sat)	Stat wk	1994	1995	1996	1997	1998	1999	2000	2001	2002	2003	2004	2005	2006	2007	2008	2009	2010	2011	2012	2013	2014	94-13 Cum Mean
31-May	22																						0
7-Jun	23			8	-	-											5	6		338	42		45
14-Jun	24		19	41	86	56	82	33		120			46	42	12	-	78	5	28	-	665	450	
21-Jun	25		166	587	584	164	823	33	426	428		1,471	745	562	107	26	467	511	155	41	950	1,283	
28-Jun	26		558	2,071	848	614	1,508	1,654	2,889	1,421	4,186	3,311	995	2,108	1,093	1,060	1,949	3,274	1,237	367	2,840	7,911	
5-Jul	27		2,906	4,094	5,340	2,458	2,243	4,615	5,346	2,995	10,908	5,015	3,330	4,224	3,490	2,968	3,760	4,937	2,114	1,262	8,771	10,000	
12-Jul	28		6,457	7,202	6,827	4,039	3,031	10,267	7,229	4,608	15,326	7,362	7,769	6,112	5,737	4,450	7,211	6,467	3,095	3,162	9,749	10,641	
19-Jul	29		9,696	8,749	9,128	5,747	3,511	13,591	8,595	7,277	17,181	9,904	10,480	8,087	7,625	4,639	9,070	8,012	4,142	3,899	12,915	11,317	
26-Jul	30		11,371	10,137	10,917	7,534	4,000	16,037	9,549	9,186	20,146	12,566	12,473	9,927	9,518	7,644	10,288	9,286	4,804	6,223	17,460	12,056	
2-Aug	31		13,181	11,047	12,758	8,911	4,454	16,953	10,371	12,247	22,636	15,044	13,676	10,869	11,527	10,225	11,144	11,328	5,621	9,213	20,063	12,364	
9-Aug	32		14,165	11,648	14,017	10,051	4,719	18,508	12,398	13,225	23,600	16,527	15,322	11,536	13,142	11,690	11,667	14,110	6,368	11,101	21,458	12,579	
16-Aug	33		16,450	12,216	14,541	11,151	4,949	19,498	13,000	13,591	24,206	17,378	16,780	12,277	14,239	12,321	12,161	14,819	6,746	11,842	21,992	12,705	
23-Aug	34		17,446	12,621	14,826	12,182	5,146	19,884	13,122	13,734	24,745	17,720	17,597	12,861	15,530	12,624	12,601	15,098	6,975	12,262	22,153	12,773	
30-Aug	35		17,777	12,868	15,010	12,774	5,242	20,112	13,198	13,829	24,947	17,822	17,856	13,835	16,017	12,773	12,781	15,247	7,058	12,416	22,185	12,830	
6-Sep	36		17,916	13,035	15,145		5,293	20,190	13,333	13,910	25,323	17,860	17,948	14,292	16,445	12,864	12,863	15,349	7,085	12,635	22,197	12,841	
13-Sep	37				15,155		5,368	20,283	13,393	13,933			17,993	14,530	16,445	12,919	12,864	15,386	7,130	13,238	22,204	12,847	
20-Sep	38				15,167		5,377	20,291	13,417				17,993	14,732	16,445	12,941	12,864		7,144	13,287		15,080	
27-Sep	39						5,377	20,319	13,417							12,942		7,146	13,377				15,080
Grand Total		17,916	13,035	15,167	12,774	5,377	20,319	13,417	13,933	25,323	17,860	17,993	14,732	16,445	12,942	12,864	15,386	7,146	13,377	22,204	12,847	9,141	15,080
Coho (GW wheels only)																							
Week Ending (Sat)	Stat wk	1994	1995	1996	1997	1998	1999	2000	2001	2002	2003	2004	2005	2006	2007	2008	2009	2010	2011	2012	2013	2014	94-13 Cum Mean
31-May	22			0	0	0																	0
7-Jun	23			0	0	0											0	0		0	0		0
14-Jun	24		0	0	0	0											0	0		0	0		0
21-Jun	25		0	0	0	0											0	0		0	0		0
28-Jun	26		0	0	0	0											0	0		0	0		0
5-Jul	27		0	0	0	0											0	0		0	0		0
12-Jul	28		0	0	0	0											0	0		0	0		0
19-Jul	29		4	2	0	0		1	0	2	6	10	6	12	0	6	7	4	0	8	58		6
26-Jul	30		2	14	17	2	8	8	9	3	27	76	101	71	78	27	81	75	37	0	57	239	
2-Aug	31		93	30	172	70	118	152	83	150	171	256	428	219	408	153	315	400	258	35	449	788	
9-Aug	32		420	192	584	169	300	486	1206	790	540	690	1049	495	1179	415	1162	1797	1098	120	1887	1769	
16-Aug	33		2947	483	950	363	483	1154	1750	2683	1281	1304	2197	1355	2267	906	2172	2637	2176	418	2485	2584	
23-Aug	34		4438	682	1471	627	1113	1704	1981	3715	2435	1908	3170	2362	3311	1344	3517	3900	3069	614	4390	3369	
30-Aug	35		5157	910	1907	784	1351	2462	2297	4322	3018	2283	3517	3914	3381	1673	4525	5254	3315	823	4839	3891	
6-Sep	36		5453	1006			1540	2958	2703	5198	4930	2445	3699	4653	3798	1930	5132	6068	3428	1111	5180	4180	
13-Sep	37				2222		1652	3319	2790	5495			3727	5004	3798	2167	5150	6348	3675	1821	5414	4371	
20-Sep	38				2222		1696	3476	2852				3727	5184	3798	2258	5150		3840	1898			3,797
27-Sep	39						1696	3683	2852							2258		3890	2170				3,797
Grand Total		5453	1006	2222	784	1696	3683	2852	5495	4930	2445	3727	5184	3798	2258	5150	6348	3890	2170	5414	4371	1,517	3,797

Steelhead (GW wheels only)																									
Week Ending	Stat wk	1994	1995	1996	1997	1998	1999	2000	2001	2002	2003	2004	2005	2006	2007	2008	2009	2010	2011	2012	2013	2014	94-13 Cum Mean		
31-May	22			0	0	0																	0		
7-Jun	23			4	0	0																	3		
14-Jun	24	1	1	6	16	3	2		6			1	2	2	0	4	0	8	0	10	5	8	4		
21-Jun	25	4	2	8	19	8	2	1	8		0	2	4	2	0	4	7	10	1	10	6	8	5		
28-Jun	26	5	2	8	19	9	2	1	8	0	0	2	5	4	2	4	10	11	5	13	6	10	6		
5-Jul	27	6	2	9	19	9	2	1	8	0	0	2	5	4	2	4	10	11	6	16	6	10	6		
12-Jul	28	6	2	9	19	10	3	2	8	0	0	2	5	4	5	4	10	11	8	16	6	12	7		
19-Jul	29	8	3	11	19	14	3	6	10	1	0	2	7	5	6	6	10	12	10	16	6	17	8		
26-Jul	30	16	5	18	21	17	5	11	11	4	7	6	12	7	6	16	12	20	11	24	12	43	13		
2-Aug	31	25	8	26	34	36	14	25	24	31	36	27	19	12	9	42	24	33	19	59	22	81	26		
9-Aug	32	42	13	64	54	53	22	111	64	61	72	64	31	31	22	74	73	50	32	124	33	136	55		
16-Aug	33	59	20	93	86	65	68	216	141	76	131	138	44	49	48	88	157	87	43	266	41	142	96		
23-Aug	34	78	23	120	177	117	130	263	208	137	175	182	53	88	78	152	232	117	78	365	68	142	142		
30-Aug	35	116	33	187	267	149	183	286	265	157	224	218	106	122	105	223	305	148	91	442	91	186	186		
6-Sep	36	128	33	249		167	232	394	359	261	249	236	142	147	143	290	431	168	114	515	122	231	231		
13-Sep	37			253		183	297	422	412			241	154	147	161	293	462	228	245	542	136	278	278		
20-Sep	38			254		190	313	438				241	176	147	176	293		286	254				279	279	
27-Sep	39					190	332	438							177			264	342					279	279
Grand Total		128	33	254	267	190	332	438	412	261	249	241	176	147	177	293	462	264	342	542	136	136	278	278	
Pinks (GW wheels only)																									
Week Ending (Sat)	Stat wk	1994	1995	1996	1997	1998	1999	2000	2001	2002	2003	2004	2005	2006	2007	2008	2009	2010	2011	2012	2013	2014	MEAN EVEN YR (94-12)		
31-May	22			-	-	-																	0		
7-Jun	23			-	-	-																	0		
14-Jun	24	-	-	-	-	-			-	-		-	-	-	-	-	-	-	-	-	-	-	0		
21-Jun	25	-	-	-	-	-			-	-		-	-	-	-	-	-	-	-	-	-	-	0		
28-Jun	26	-	-	-	-	-			-	-		-	-	-	-	-	-	-	-	-	-	-	0		
5-Jul	27	-	3	-	-	1	-	-	1	-	4	4	13	1	-	-	6	1	-	-	-	27	0		
12-Jul	28	2	54	5	8	5	6	-	12	3	137	30	57	5	1	1	22	4	-	-	178	16			
19-Jul	29	30	334	53	75	64	77	32	69	41	2,063	270	1,027	40	1	34	241	14	2	1	609	78			
26-Jul	30	391	870	202	352	315	422	126	196	162	8,725	1,680	3,792	164	120	86	2,170	48	63	44	3,404	1,361			
2-Aug	31	984	1,274	872	1,495	1,497	1,909	223	4,850	1,021	15,030	6,052	5,399	657	2,290	243	4,356	183	499	501	6,093	5,568			
9-Aug	32	1,588	1,761	2,647	3,170	3,564	4,172	2,761	10,338	2,570	17,939	9,858	6,611	1,271	5,013	516	14,274	496	1,896	1,469	10,082	5,133			
16-Aug	33	5,026	2,870	4,122	4,759	3,935	8,710	5,296	14,355	3,913	19,893	13,972	7,586	1,492	7,151	816	19,184	1,222	3,905	2,735	12,134	4,253			
23-Aug	34	7,672	3,646	5,991	7,376	6,294	12,325	5,792	16,464	5,987	21,400	15,610	8,311	1,821	7,811	1,054	21,103	1,500	4,678	3,356	13,432	5,508			
30-Aug	35	9,582	4,645	9,486	9,132	6,970	14,772	6,009	17,972	6,190	22,405	16,240	9,190	1,912	8,211	1,209	23,007	1,638	4,927	3,827	14,518	6,306			
6-Sep	36	9,992	5,437	12,331	10,855	7,170	15,711	6,535	22,231	8,329	22,783	16,376	9,389	1,961	8,336	1,345	23,762	1,682	5,108	4,110	14,518	6,983			
13-Sep	37	10,044	5,437	12,985	10,855	7,222	17,324	6,592	26,539	8,705	22,783	16,415	9,475	1,961	8,437	1,357	24,004	1,777	5,936	4,177	14,603	7,124			
20-Sep	38	10,044	5,437	13,087	10,855	7,234	18,045	6,618	26,676	8,705	22,783	16,415	9,501	1,961	8,449	1,357		1,789	5,991			7,468			
27-Sep	39	10,044	5,437	13,117	10,855	7,234	18,348	24,966	26,676	8,705	22,783	16,414	9,501	1,961	8,449	1,357		1,789	6,261			9,505			
Grand Total		10,044	5,437	13,117	10,855	7,234	18,348	24,966	26,676	8,705	22,783	16,415	9,501	1,961	8,449	1,357	24,004	1,789	6,261	4,177	14,603	5,133	9,505		
Chum (GW wheels only)																									
Week Ending (Sat)	Stat wk	1994	1995	1996	1997	1998	1999	2000	2001	2002	2003	2004	2005	2006	2007	2008	2009	2010	2011	2012	2013	2014	94-13 Cum Mean		
31-May	22			0	0	0																0			
7-Jun	23			0	0	0																0			
14-Jun	24	0	0	0	0	0	0		0			0	0	0	0	0	0	0	0	0	0	0			
21-Jun	25	0	0	1	0	0	0	0	0		0	0	0	0	0	0	0	0	0	0	0	0			
28-Jun	26	0	0	1	0	0	0	0	0		0	0	0	0	0	0	0	1	0	0	0	1			
5-Jul	27	0	0	2	0	1	0	0	0		0	0	0	0	0	0	1	1	0	1	1	1			
12-Jul	28	2	0	2	1	1	0	0	1		0	0	0	0	0	1	1	1	0	1	2	0			
19-Jul	29	5	6	3	1	2	1	1	2	1	1	0	1	0	0	7	1	2	1	2	3	2			
26-Jul	30	8	9	7	3	2	2	2	5	3	12	0	8	1	0	10	7	6	2	3	3	5			
2-Aug	31	19	12	14	9	3	6	3	8	7	25	0	13	6	5	15	9	13	6	11	4	9			
9-Aug	32	24	33	41	26	16	11	17	16	9	42	0	25	20	11	18	13	16	12	12	7	14			
16-Aug	33	60	62	68	31	17	14	29	29	13	52	0	26	31	18	19	26	19	31	21	7	29			
23-Aug	34	120	113	107	88	35	24	46	45	22	92	5	27	47	21	36	22	36	25	43	31	46			
30-Aug	35	178	129	166	72	49	36	51	57	22	87	11	48	55	31	26	53	28	53	47	27	62			
6-Sep	36	215	172	238	96	61	41	142	77	32	99	23	62	69	36	38	65	30	60	60	33	83			
13-Sep	37	225	172	293	96	81	64	166	111	38	99	49	66	69	45	38	74	32	109	65	34	97			
20-Sep	38	225	172	305	96	106	71	177	115	38	99	64	68	69	54	38		34	112			109			
27-Sep	39					106	83	177							54			34	134				109		
Grand Total		225	172	305	96	106	83	177	115	38	99	64	68	69	54	38	74	34	134	65	34	14	109		