



Nisga'a Lisims Government

NISGA'A FISHERIES & WILDLIFE
 T 250 633 2617 / F 250 633 2971
 TF 1 866 633 2145
 PO Box 228 / 5101 Gitzyon St
 New Aiyansh BC / Canada V0J 1A0
 NISGAANATION.CA

2020 NASS STOCK ASSESSMENT UPDATE

FISHWHEEL OPERATIONAL DATA TO:	9-Aug-20
WATER LEVEL FOR DATE AT GITWINKSIHLKW (m)	2.1
HISTORICAL LEVEL FOR DATE - MEAN 94-19 (m)	1.8
WATER TEMPERATURE FOR DATE AT GITWINKSIHLKW (m)	8.1
HISTORICAL WATER TEMP FOR DATE - MEAN 94-19 (m)	10.1

FISHWHEEL CATCH SUMMARIES	SOCK	CHIN	COHO	STEEL	PINK-EVE	CHUM	LAMP
FISHWHEEL TOTAL CATCH OF ADULTS	33,190	2,752	1,163	71	8,241	8	492
HISTORICAL AVG CUM CATCH (00-19) TO DATE	33,600	4,200	3,000	180	5,780	30	500
HISTORICAL AVG CUM TOTAL CATCH (00-19)	42,000	4,000	14,000	1,000	12,000	130	700
AVERAGE DAILY CATCH (5 D) OF ADULTS - GW	292	2	65	2	287	0	2
AVERAGE DAILY CATCH (5 D) OF ADULTS - GH	339	2	54	2	190	0	4
FISHWHEEL TOTAL TAGGED (OR ADIPOSE FIN MARKED)	7,154	2,490	591	63	0	6	386
FISHWHEEL TOTAL JACKS	1,943	2,383	19	NA	NA	NA	NA
HISTORICAL MEAN JACKS (00-19) TO DATE	2,922	759	212	NA	NA	NA	NA

IN-SEASON RUN SIZE SUMMARIES	SOCK	CHIN	COHO	STEEL	9-Aug-20
IN-SEASON RUN SIZE ESTIMATE TO DATE	232,993	12,545	14,671	911	
HISTORICAL MEAN RUN SIZE TO GW FOR DATE (94-19)	238,000	18,700	21,593	3,080	
RUN SIZE TARGET 2020 (MIN. FOR STEELHEAD)	230,000	15,000	65,000	4,200	

IN-SEASON FORECASTS TO GW - METHODS:	SOCK	CHIN	COHO	STEEL	9-Aug-20
1. RUN TIMING METHOD (94-19) - Mean Run timing	276,000	13,000	57,000	4,000	
Lower (-2 S.D.)	230,000	12,000	34,000	2,000	
Upper (+2 S.D.)	346,000	14,000	113,000	8,000	In-season/Final
2. IN-SEASON TO FINAL (regression):	277,000	13,000	82,000	8,000	r ² (CH) = 1.00
95% CI - lower	183,000	13,000	31,000	5,000	r ² (SO) = 0.84
95% CI - upper	371,000	14,000	106,000	11,000	r ² (CO) = 0.54
GW RUN SIZE TARGET (DEPENDING ON HARVESTS ABOVE GW)	230,000	15,000	65,000	4,200	r ² (ST) = 0.66
Mean Run Timing % Return Estimate to GW fishwheels (94-19)	84%	97%	26%	22%	
Late run	69%	87%	10%	7%	
Early run	95%	99%	46%	46%	

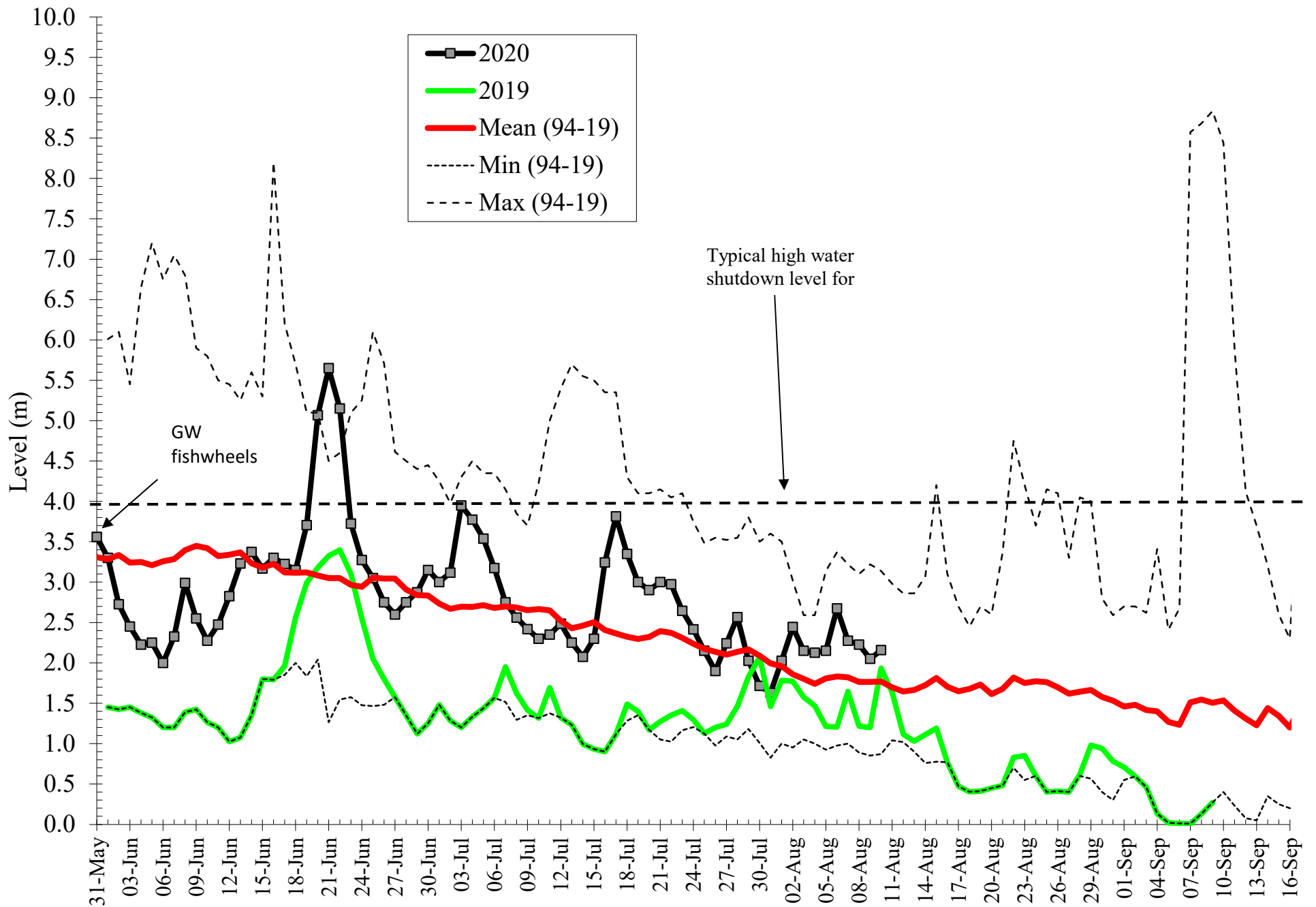
IN-SEASON NET ESCAPEMENT ESTIMATES	SOCK	CHIN	COHO	STEEL	9-Aug-20
HARVEST ESTIMATES ABOVE GW TO DATE	16,160	1,786	46	8	
NET ESCAPEMENT (ABOVE GW):	216,833	10,759	14,625	903	
NET ESCAPEMENT TARGET (UPPER RIVER ONLY)	200,000	13,000	60,000	4,000	

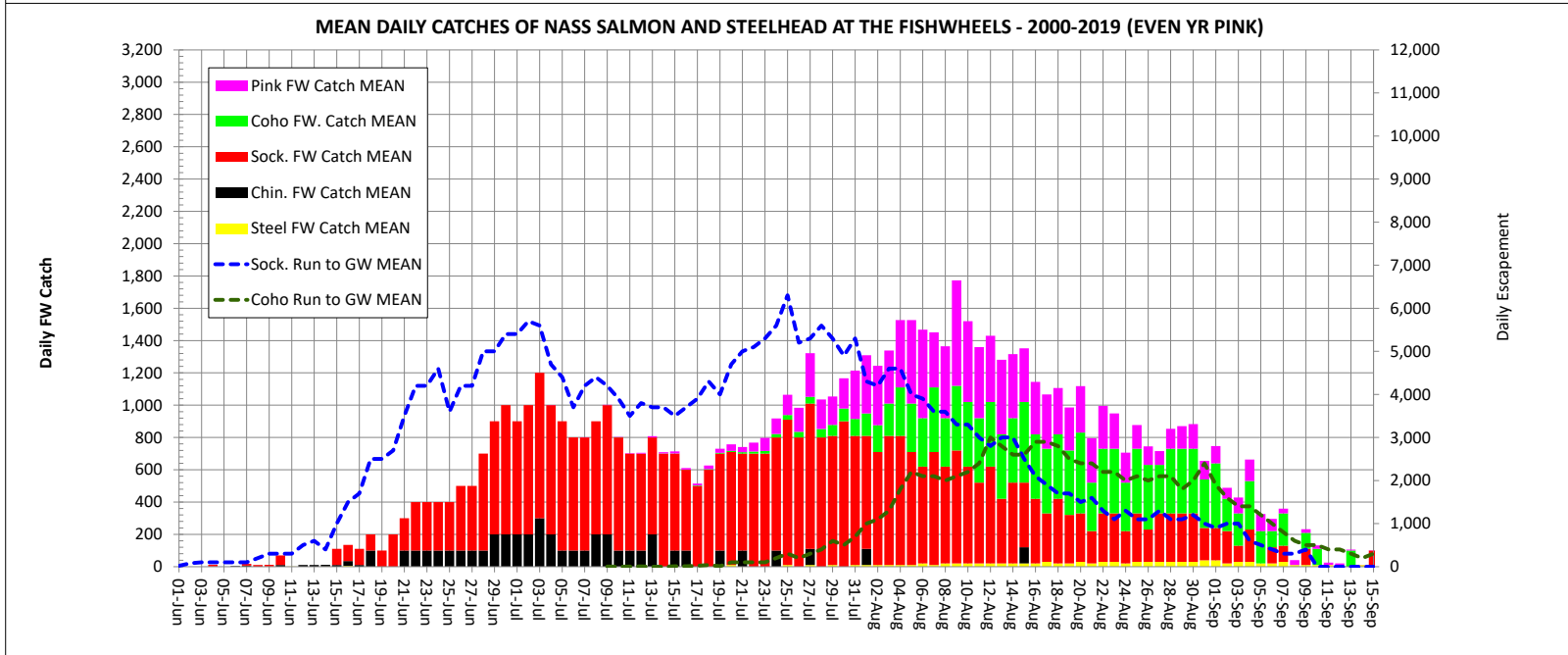
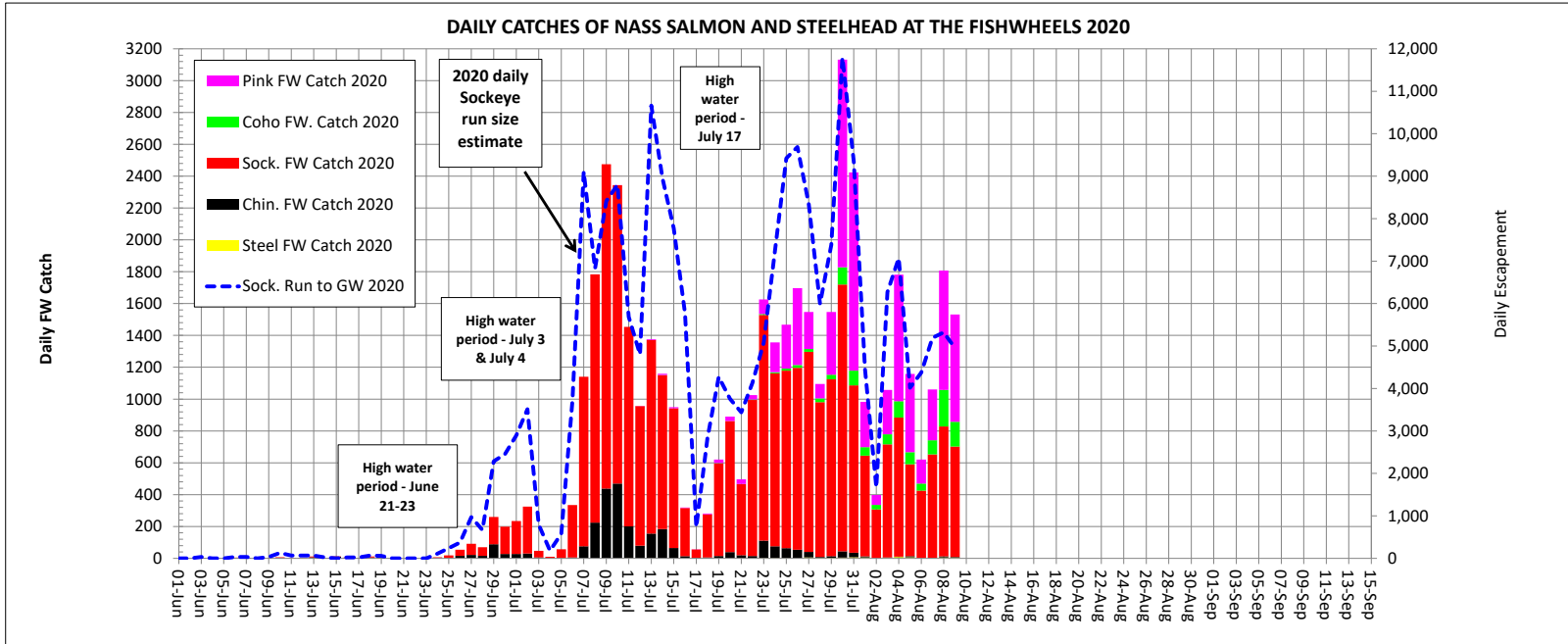
NISGA'A TOTAL HARVEST SUMMARY	SOCK	CHIN	COHO	PINK-EVE	CHUM	STEEL
MARINE SALE FISHERY TOTAL	CLOSED	CLOSED	CLOSED	CLOSED	CLOSED	CLOSED
IN-RIVER SALE FISHERY TOTAL	CLOSED	CLOSED	CLOSED	CLOSED	CLOSED	CLOSED
INDIVIDUAL SALE (IS) FISHERY TOTAL	CLOSED	CLOSED	CLOSED	CLOSED	CLOSED	CLOSED
NLG COMMUNAL SELECTIVE TREATY FISHERY - GH FISHWHEELS	CLOSED	CLOSED	CLOSED	CLOSED	CLOSED	CLOSED
NLG COMMUNAL SELECTIVE TREATY FISHERY - SEINE	CLOSED	CLOSED	CLOSED	CLOSED	CLOSED	CLOSED
DOMESTIC (FSC) GILLNET FISHERY - WK END: 4 AUG	32,342	5,444	221	4,744	48	64
SUB TOTAL (NLG TREATY FISHERIES)	32,342	5,444	221	4,744	48	64
NLG SOCK DEMONSTRATION FISHERY HARVEST - DFO INVENTORY	CLOSED	CLOSED	CLOSED	CLOSED	CLOSED	CLOSED
GRAND TOTAL	32,342	5,444	221	4,744	48	64

PRE-SEASON TRTC & ENTITLEMENT FORECASTS	SOCK	CHIN	COHO	PINK-EVE	CHUM
HISTORICAL MEAN TRTC (1994-2019)	548,000	30,000	194,000	540,000	42,000
PRE-SEASON TRTC FORECAST (50% PROBABILITY)	386,000	23,000	290,000	291,000	29,000
PRE-SEASON NISGA'A ENTITLEMENT	59,000	4,800	19,200	11,000	500
CUM UNDERAGE (+)/OVERAGE (-) AVAILABLE OR OWED: 2000-19	-1,828	rebuild	2,067	-2,886	< esc. goal
TOTAL PRE-SEASON NISGA'A CATCH POTENTIAL	57,000	4,800	21,000	8,000	500

IN-SEASON TRTC & ENTITLEMENT ESTIMATES	SOCK	CHIN	COHO	PINK-EVE	CHUM
PROJECTED TRTC BASED ON INSEASON TO FINAL REGRESSION	300,000	22,000	173,000	Pre-season	Pre-season
ESTIMATED %TRTC TO DATE: MEAN. RUN TIMING	88%	96%	18%	19%	18%
Lower (95% CI)	248,000	22,000	98,000	Pre-season	Pre-season
Upper (95% ci.)	352,000	23,000	209,000	Pre-season	Pre-season
IN-SEASON NISGA'A ENTITLEMENT TARGET	40,000	4,600	13,840	Pre-season	Pre-season
MINIMUM	29,000	4,600	7,840	Pre-season	Pre-season
MAXIMUM	52,000	4,800	16,720	Pre-season	Pre-season

Daily Water Level at Gitwinksihlkw Fishwheels 2020





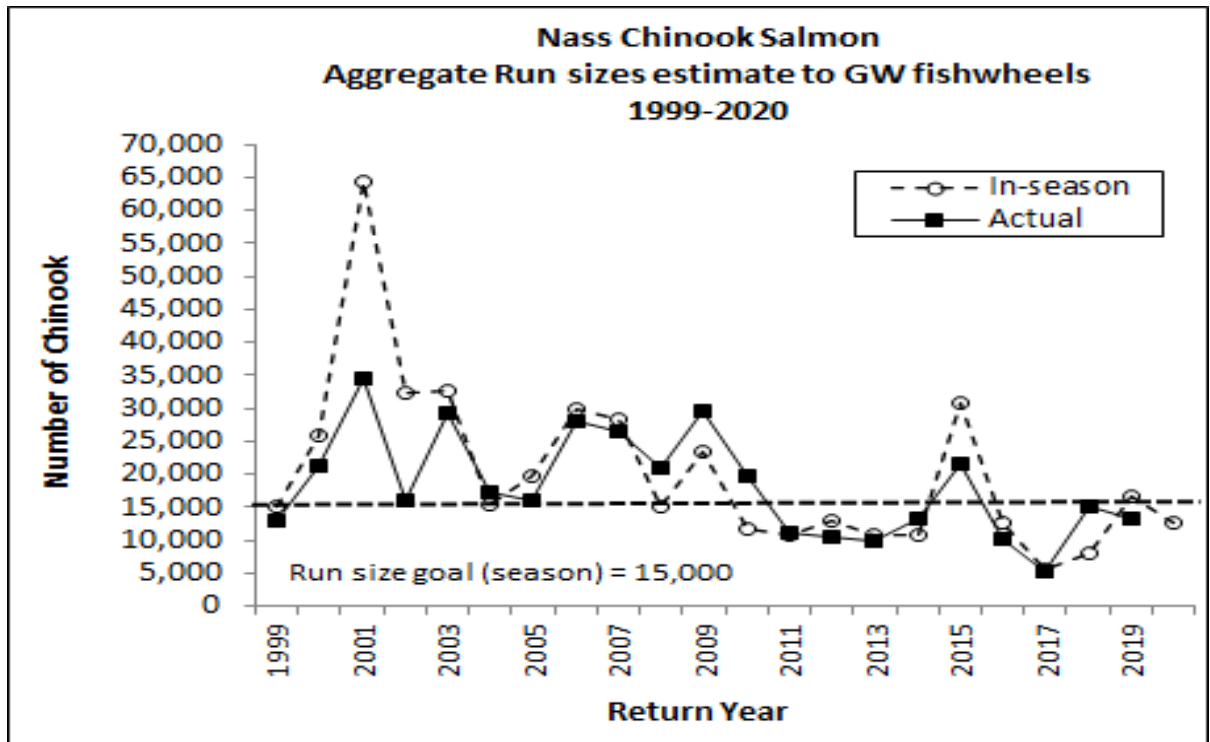
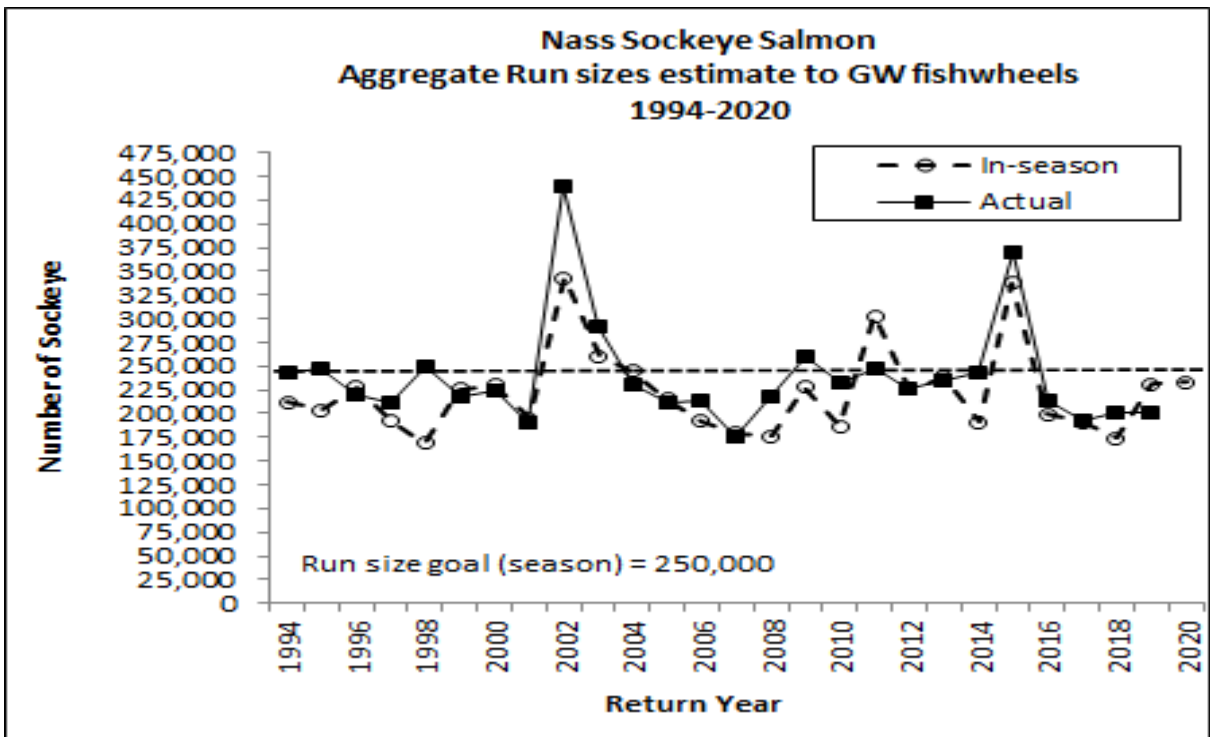


Table 1. In-season and post-season estimates of aggregate run sizes to date for Nass adult sockeye salmon to Gitwinksihlkw test fishery fishwheels, 1994-2020.

Year	Date	Wk	In-season	Actual	Raw Error	Raw Error%	Abs Error	Abs Error%	Abs Acc%
1994	9-Aug	33	211,866	242,665	-30,799	-12.7%	30,799	13%	87%
1995	9-Aug	33	203,144	247,596	-44,452	-18.0%	44,452	18%	82%
1996	9-Aug	33	228,144	219,611	8,533	3.9%	8,533	4%	96%
1997	9-Aug	33	191,704	211,445	-19,741	-9.3%	19,741	9%	91%
1998	9-Aug	33	168,923	249,982	-81,059	-32.4%	81,059	32%	68%
1999	9-Aug	33	225,842	217,103	8,739	4.0%	8,739	4%	96%
2000	9-Aug	33	230,384	223,168	7,216	3.2%	7,216	3%	97%
2001	9-Aug	33	195,060	189,952	5,107	2.7%	5,107	3%	97%
2002	9-Aug	33	343,166	438,819	-95,653	-21.8%	95,653	22%	78%
2003	9-Aug	33	260,773	290,979	-30,207	-10.4%	30,207	10%	90%
2004	9-Aug	33	244,639	229,967	14,672	6.4%	14,672	6%	94%
2005	9-Aug	33	215,294	210,555	4,739	2.3%	4,739	2%	98%
2006	9-Aug	33	191,751	213,833	-22,082	-10.3%	22,082	10%	90%
2007	9-Aug	33	179,351	175,104	4,248	2.4%	4,248	2%	98%
2008	9-Aug	33	176,409	216,840	-40,431	-18.6%	40,431	19%	81%
2009	9-Aug	33	227,674	259,860	-32,186	-12.4%	32,186	12%	88%
2010	9-Aug	33	186,477	233,098	-46,622	-20.0%	46,622	20%	80%
2011	9-Aug	33	302,657	247,917	54,740	22.1%	54,740	22%	78%
2012	9-Aug	33	225,664	226,160	-495	-0.2%	495	0%	100%
2013	9-Aug	33	238,244	235,024	3,220	1.4%	3,220	1%	99%
2014	9-Aug	33	190,574	243,779	-53,205	-21.8%	53,205	22%	78%
2015	9-Aug	33	337,397	369,482	-32,084	-8.7%	32,084	9%	91%
2016	9-Aug	33	199,425	214,050	-14,625	-6.8%	14,625	7%	93%
2017	9-Aug	33	190,608	191,569	-961	-0.5%	961	1%	99%
2018	9-Aug	33	174,401	199,879	-25,478	-12.7%	25,478	13%	87%
2019	9-Aug	33	231,119	199,950	31,169	15.6%	31,169	16%	84%
2020	9-Aug	33	232,993						
MAPE ¹			222,000	238,000	-16,000			11%	
Min (MAPE)			168,923	175,104	495			0%	68%
Max (MAPE)			343,000	439,000	96,000			32%	100%
MAA ²									89%

¹ MAPE = Mean Absolute Percent Error

² MAA = Mean Absolute Accuracy

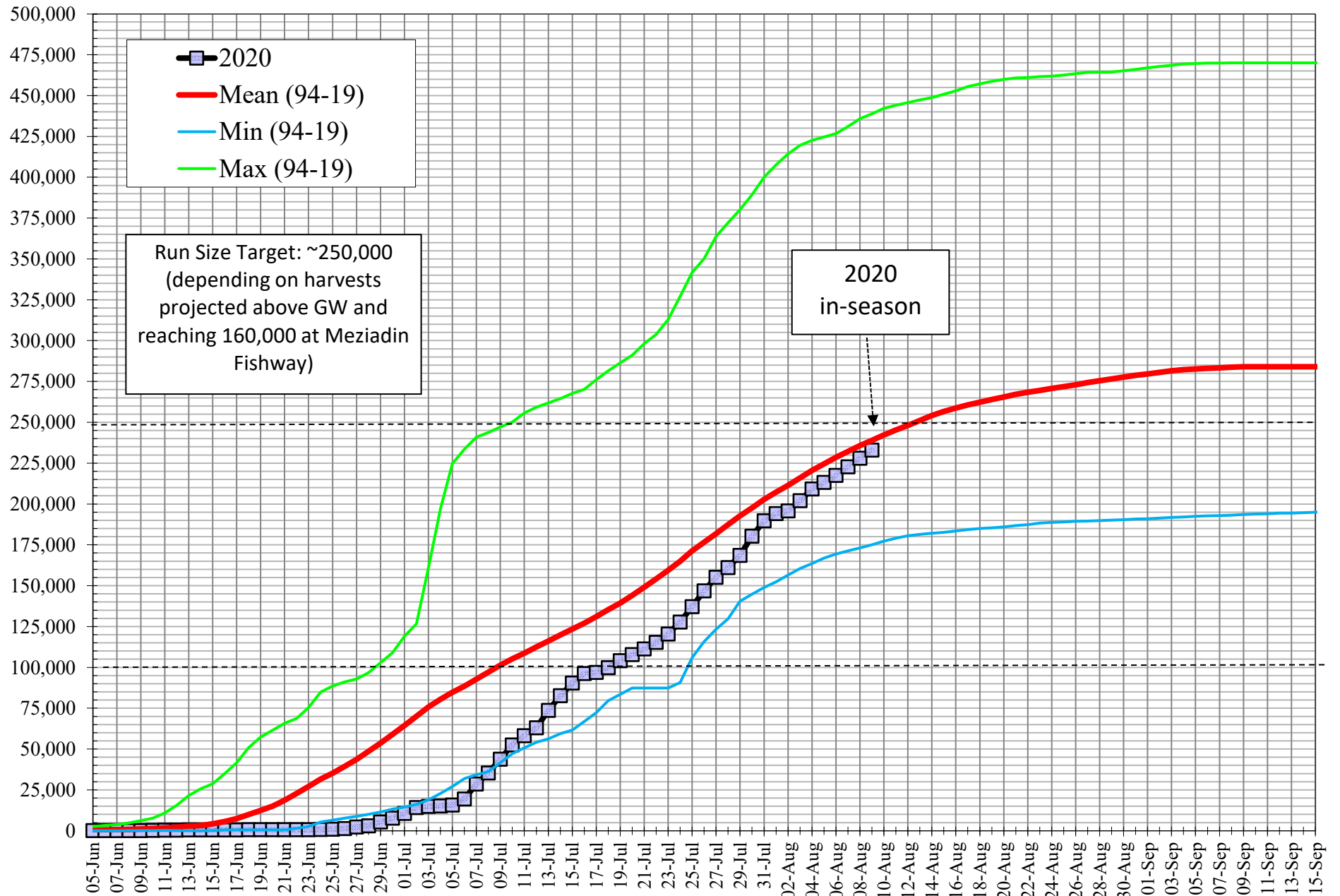
Table 2. In-season and post-season estimates of aggregate run sizes to date for Nass adult Chinook salmon to Gitwinksihlkw test fishery fishwheels, 1999-2020.

Year	Date	Wk	In-season	Actual	Raw Error	Raw Error%	Abs Error	Abs Error%	Abs Acc%
1999	9-Aug	32	15,157	13,011	2,145	16.5%	2,145	16%	84%
2000	9-Aug	32	25,867	21,175	4,691	22.2%	4,691	22%	78%
2001	9-Aug	32	64,351	34,496	29,855	86.5%	29,855	87%	13%
2002	9-Aug	32	32,286	15,899	16,387	103.1%	16,387	100%	0%
2003	9-Aug	32	32,671	29,152	3,519	12.1%	3,519	12%	88%
2004	9-Aug	32	15,394	17,217	-1,823	-10.6%	1,823	11%	89%
2005	9-Aug	32	19,746	16,028	3,718	23.2%	3,718	23%	77%
2006	9-Aug	32	29,750	28,075	1,675	6.0%	1,675	6%	94%
2007	9-Aug	32	28,257	26,598	1,659	6.2%	1,659	6%	94%
2008	9-Aug	32	15,270	20,943	-5,673	-27.1%	5,673	27%	73%
2009	9-Aug	32	23,548	29,547	-6,000	-20.3%	6,000	20%	80%
2010	9-Aug	32	11,678	19,745	-8,067	-40.9%	8,067	41%	59%
2011	9-Aug	32	10,729	11,063	-334	-3.0%	334	3%	97%
2012	9-Aug	32	12,988	10,430	2,558	24.5%	2,558	25%	75%
2013	9-Aug	32	10,844	9,972	872	8.7%	872	9%	91%
2014	9-Aug	32	10,755	13,324	-2,569	-19.3%	2,569	19%	81%
2015	9-Aug	32	30,742	21,719	9,023	41.5%	9,023	42%	58%
2016	9-Aug	32	12,542	10,280	2,263	22.0%	2,263	22%	78%
2017	9-Aug	32	5,612	5,260	351	6.7%	351	7%	93%
2018	9-Aug	32	8,198	15,191	-6,993	-46.0%	6,993	46%	54%
2019	9-Aug	32	16,694	13,307	3,387	25.5%	3,387	25%	75%
2020	9-Aug	32	12,545						
MAPE ¹			21,000	18,000	2,000			27%	
Min (MAPE)			5,600	5,300	300			3%	0%
Max (MAPE)			64,000	34,000	30,000			100%	97%
MAA (all years) ²									73%

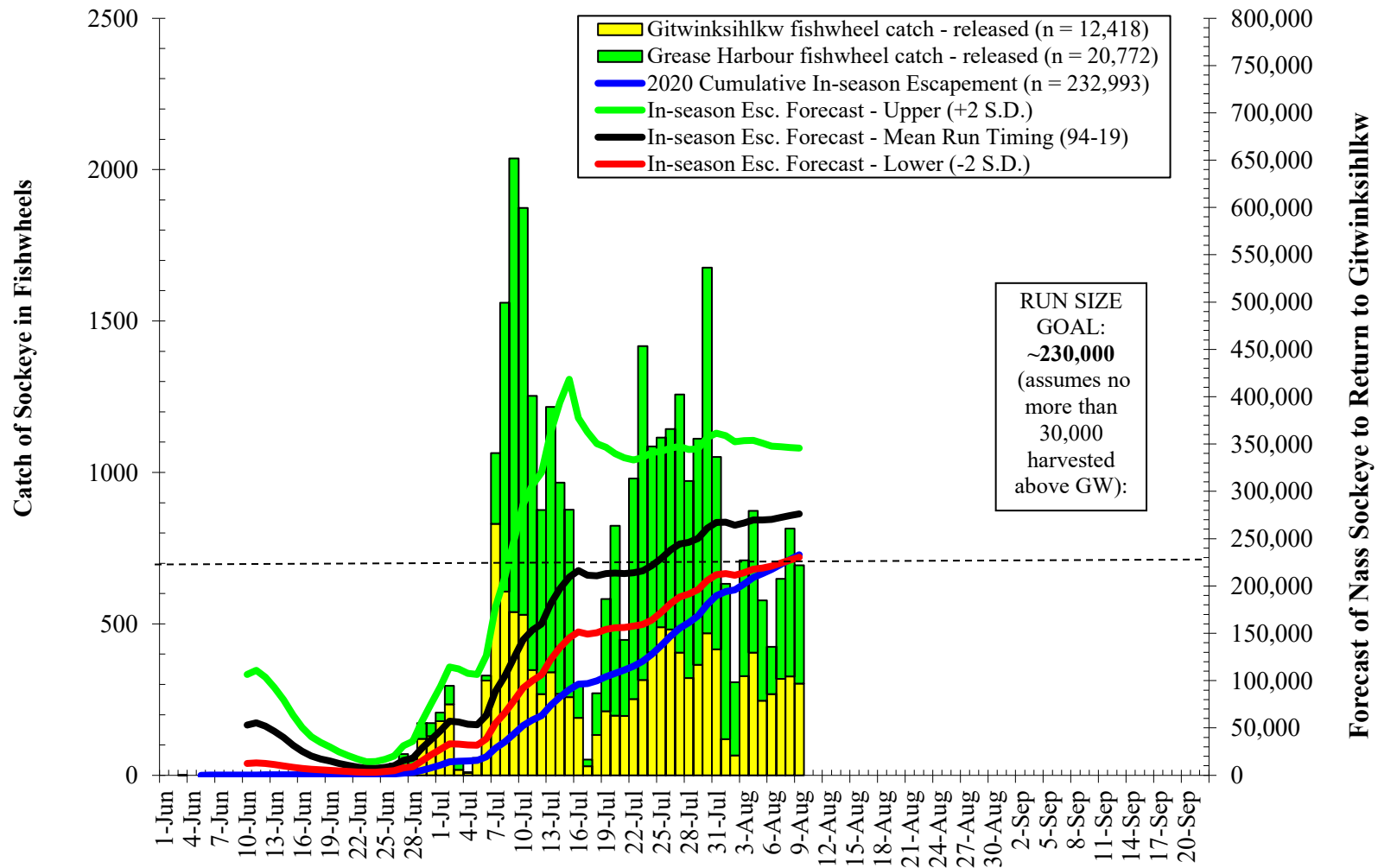
¹ MAPE = Mean Absolute Percent Error

² MAA = Mean Absolute Accuracy

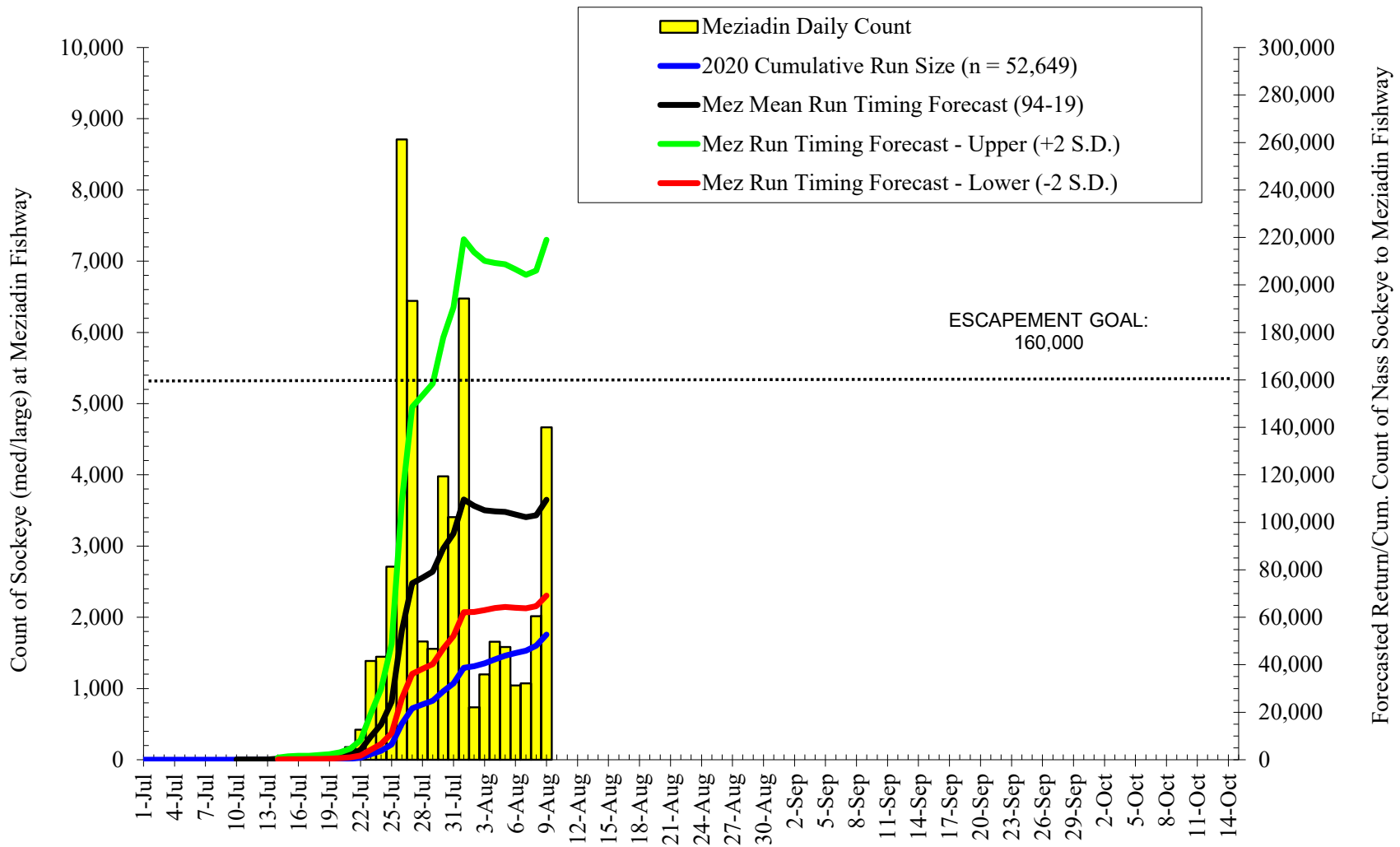
Nass Sockeye Cum. Run Size to Gitwinksilkw Fishwheels 2020 versus 94-19 Mean, Min, Max returns (before upriver harvests)



Nass Sockeye (≥ 45 cm NFL) Run Forecasts to Gitwinksihlkw Fishwheels 2020 (Mean Run timing - 1994-19)

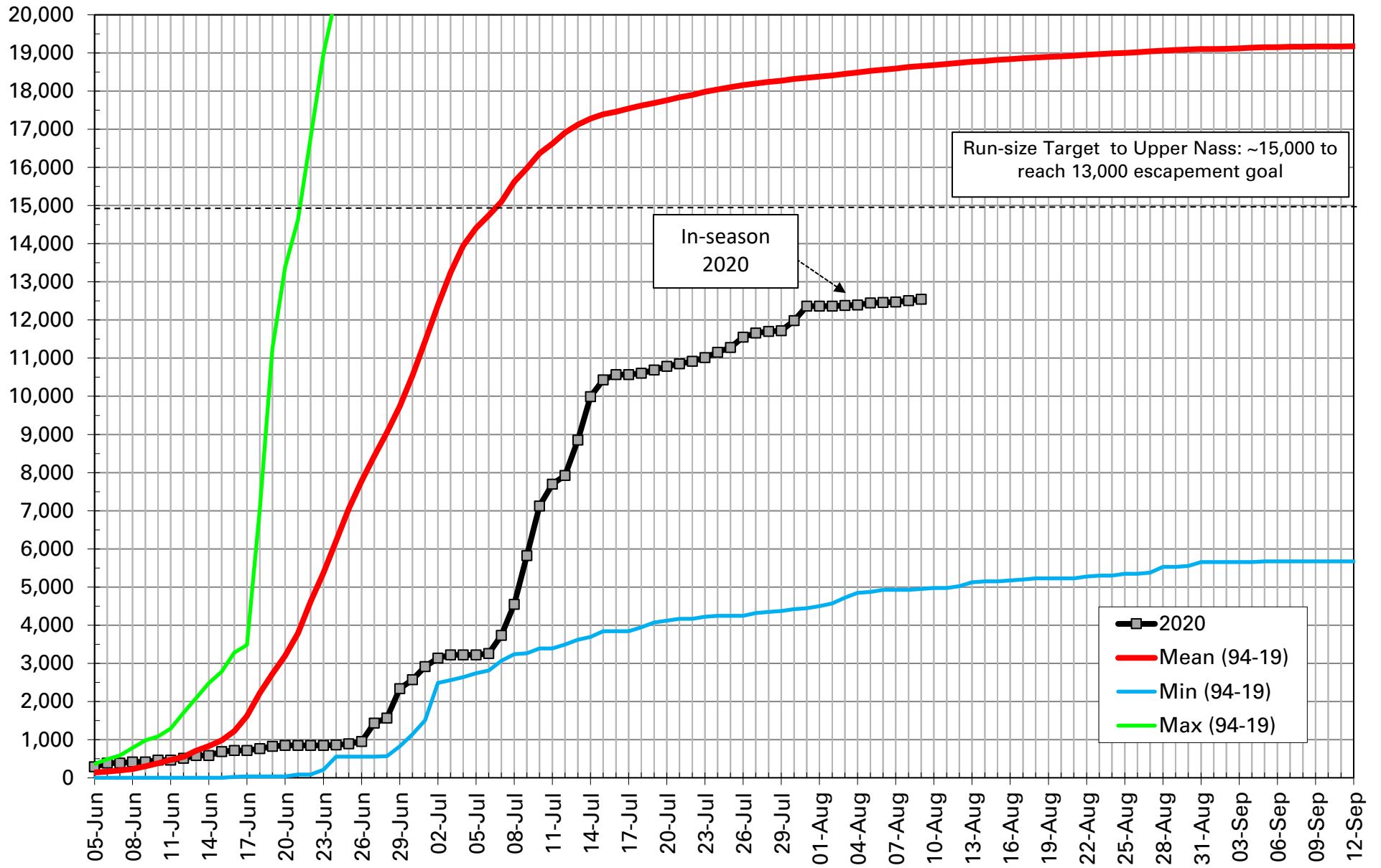


Meziadin Fishway Sockeye Counts & In-season Forecast Data 2020

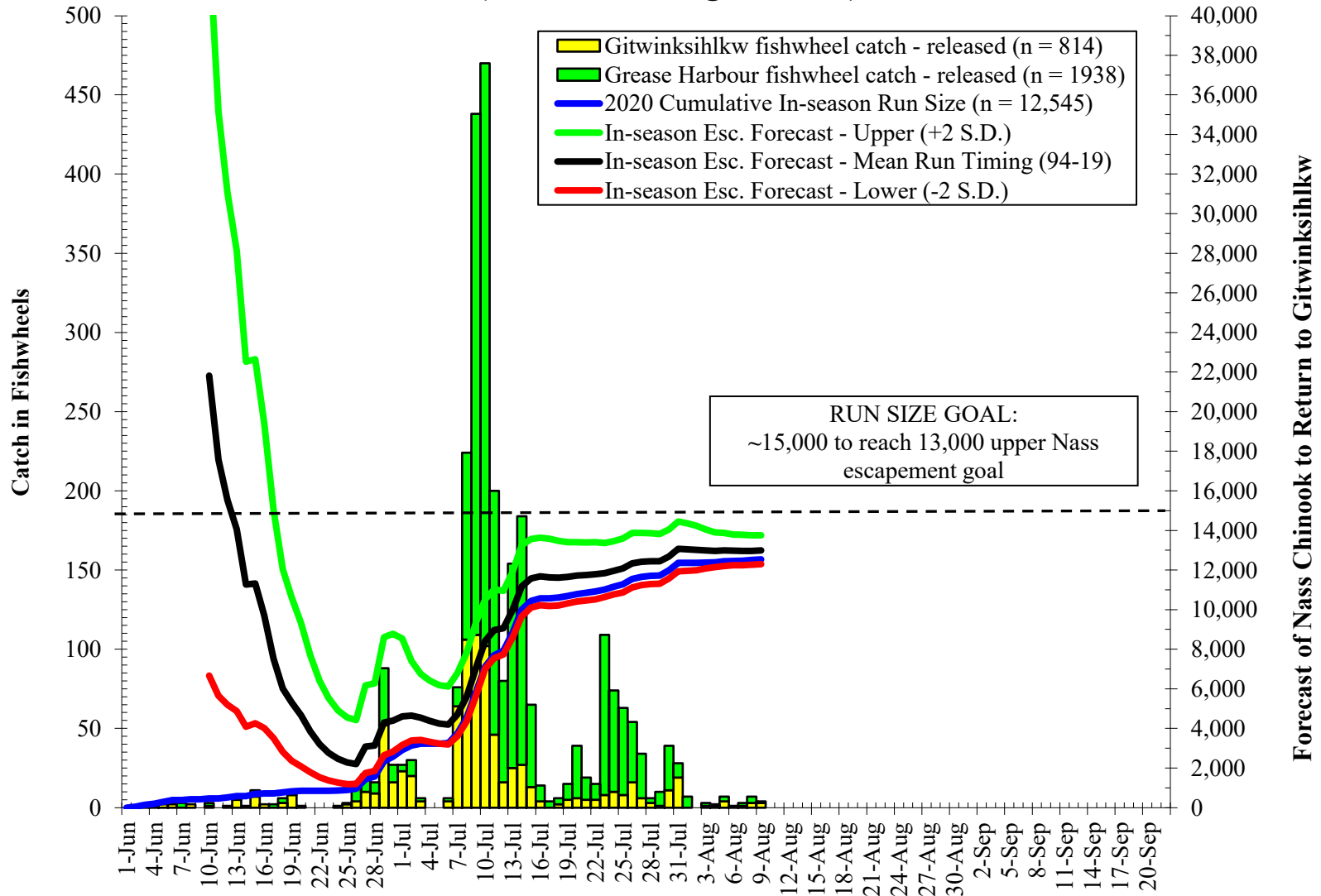


Cumulative Daily Run Sizes of Adult Nass River Chinook Salmon (≥ 50 cm NFL) to Gitwinksihlkw Fishwheels, 2000-2020.																				IN-SEASON			
Date	2000	2001	2002	2003	2004	2005	2006	2007	2008	2009	2010	2011	2012	2013	2014	2015	2016	2017	2018	2019	2020	Mean (94-19)	2020 Daily
19-Jul-20	20,087	33,608	15,543	27,709	16,174	15,390	27,352	23,369	20,274	27,954	18,770	10,426	8,286	9,738	12,230	20,802	9,573	4,070	13,214	11,907	10,691	17,690	85
20-Jul-20	20,163	33,654	15,580	27,926	16,223	15,434	27,384	23,542	20,297	28,022	18,770	10,490	8,609	9,755	12,262	20,817	9,573	4,120	13,406	11,979	10,785	17,760	93
21-Jul-20	20,173	33,654	15,607	28,082	16,272	15,506	27,478	23,562	20,343	28,159	18,953	10,554	9,082	9,771	12,294	20,832	9,596	4,170	13,502	12,052	10,853	17,840	69
22-Jul-20	20,173	33,654	15,625	28,159	16,288	15,506	27,525	24,257	20,389	28,318	19,014	10,596	9,184	9,805	12,455	20,847	9,642	4,170	13,598	12,074	10,916	17,900	63
23-Jul-20	20,249	33,654	15,671	28,268	16,304	15,622	27,525	24,700	20,412	28,432	19,014	10,660	9,271	9,838	12,584	20,935	9,687	4,220	13,935	12,114	11,014	17,980	98
24-Jul-20	20,335	33,700	15,680	28,361	16,386	15,651	27,541	25,082	20,412	28,477	19,014	10,702	9,531	9,855	12,616	21,009	9,710	4,245	14,127	12,114	11,156	18,040	141
25-Jul-20	20,378	33,769	15,707	28,438	16,516	15,680	27,541	25,551	20,459	28,500	19,014	10,787	9,768	9,855	12,616	21,038	9,710	4,245	14,175	12,114	11,282	18,100	126
26-Jul-20	20,421	33,853	15,707	28,531	16,533	15,723	27,572	25,748	20,528	28,591	19,075	10,830	9,870	9,888	12,713	21,127	9,710	4,245	14,319	12,151	11,551	18,160	269
27-Jul-20	20,432	33,960	15,735	28,563	16,630	15,766	27,588	25,994	20,574	28,637	19,075	10,872	9,933	9,888	12,745	21,156	9,710	4,321	14,415	12,254	11,656	18,200	105
28-Jul-20	20,443	34,021	15,744	28,609	16,647	15,766	27,604	26,192	20,620	28,705	19,136	10,893	9,973	9,888	12,874	21,245	9,778	4,346	14,415	12,254	11,701	18,240	45
29-Jul-20	20,453	34,075	15,753	28,656	16,696	15,795	27,604	26,266	20,666	28,728	19,196	10,915	10,036	9,922	12,874	21,245	9,892	4,371	14,415	12,254	11,718	18,270	17
30-Jul-20	20,497	34,167	15,789	28,764	16,728	15,810	27,667	26,364	20,689	28,751	19,257	10,936	10,115	9,939	12,906	21,348	9,961	4,421	14,415	12,367	11,985	18,320	266
31-Jul-20	20,540	34,282	15,808	28,857	16,777	15,824	27,714	26,438	20,689	28,842	19,257	10,936	10,217	9,939	12,938	21,377	10,006	4,446	14,415	12,367	12,366	18,350	381
01-Aug-20	20,550	34,297	15,817	28,873	16,826	15,839	27,761	26,475	20,712	28,864	19,440	10,957	10,327	9,939	12,970	21,377	10,075	4,497	14,463	12,420	12,366	18,380	0
02-Aug-20	20,583	34,358	15,817	28,919	16,826	15,882	27,824	26,500	20,712	28,887	19,440	10,957	10,359	9,955	13,002	21,377	10,120	4,572	14,559	12,479	12,366	18,410	0
03-Aug-20	20,680	34,397	15,826	29,012	16,859	15,911	27,824	26,500	20,758	28,910	19,440	11,021	10,383	9,955	13,099	21,407	10,166	4,723	14,655	12,508	12,382	18,450	16
04-Aug-20	20,852	34,404	15,835	29,043	16,957	15,940	27,824	26,512	20,758	28,955	19,501	11,042	10,398	9,972	13,228	21,422	10,211	4,848	14,655	12,536	12,395	18,490	14
05-Aug-20	20,970	34,404	15,853	29,090	16,989	15,969	27,871	26,524	20,781	29,138	19,501	11,063	10,430	9,972	13,324	21,451	10,280	4,873	14,799	12,536	12,445	18,530	50
06-Aug-20	21,014	34,443	15,871	29,106	17,054	15,969	27,949	26,561	20,781	29,183	19,562	11,063	10,454	9,972	13,388	21,481	10,325	4,924	14,896	12,536	12,458	18,560	12
07-Aug-20	21,078	34,458	15,890	29,106	17,087	16,012	27,981	26,574	20,874	29,342	19,623	11,084	10,461	9,972	13,453	21,495	10,417	4,924	14,896	12,536	12,470	18,590	12
08-Aug-20	21,121	34,466	15,890	29,121	17,120	16,027	28,028	26,574	20,920	29,479	19,684	11,106	10,485	9,989	13,517	21,510	10,439	4,924	15,184	12,536	12,508	18,630	37
09-Aug-20	21,186	34,496	15,899	29,152	17,217	16,056	28,075	26,598	20,943	29,547	19,745	11,106	10,493	10,039	13,517	21,510	10,439	4,949	15,232	12,536	12,545	18,660	37
10-Aug-20	21,218	34,519	15,899	29,183	17,332	16,056	28,075	26,635	20,943	29,547	19,745	11,106	10,525	10,056	13,517	21,525	10,485	4,974	15,232	12,564		18,680	
11-Aug-20	21,294	34,535	15,908	29,183	17,413	16,070	28,122	26,697	20,989	29,593	19,867	11,127	10,564	10,056	13,517	21,540	10,508	4,974	15,232	12,621		18,710	
12-Aug-20	21,315	34,565	15,935	29,230	17,413	16,085	28,169	26,709	21,012	29,593	19,989	11,127	10,611	10,056	13,549	21,554	10,599	5,024	15,232	12,683		18,740	
13-Aug-20	21,358	34,596	15,935	29,245	17,462	16,099	28,185	26,722	21,058	29,593	20,050	11,169	10,643	10,056	13,582	21,584	10,622	5,125	15,328	12,773		18,770	
14-Aug-20	21,412	34,596	15,935	29,261	17,527	16,114	28,185	26,746	21,058	29,661	20,111	11,169	10,643	10,056	13,646	21,628	10,667	5,150	15,376	12,829		18,790	
15-Aug-20	21,444	34,619	15,944	29,292	17,625	16,114	28,232	26,759	21,058	29,775	20,111	11,169	10,666	10,056	13,678	21,658	10,713	5,150	15,520	12,847		18,820	
16-Aug-20	21,477	34,634	15,944	29,307	17,641	16,114	28,264	26,808	21,081	29,843	20,111	11,169	10,666	10,073	13,678	21,672	10,736	5,175	15,616	12,862		18,840	
17-Aug-20	21,509	34,634	15,953	29,307	17,674	16,143	28,279	26,820	21,151	29,843	20,172	11,169	10,682	10,073	13,678	21,746	10,736	5,200	15,616	12,877		18,860	
18-Aug-20	21,509	34,634	15,972	29,307	17,690	16,171	28,311	26,833	21,151	29,889	20,172	11,169	10,682	10,089	13,678	21,775	10,736	5,225	15,616	12,890		18,880	
19-Aug-20	21,531	34,642	15,972	29,307	17,707	16,200	28,389	26,857	21,174	29,912	20,232	11,169	10,714	10,106	13,710	21,820	10,758	5,225	15,712	12,890		18,900	
20-Aug-20	21,541	34,657	15,999	29,338	17,739	16,200	28,436	26,870	21,174	29,912	20,232	11,191	10,722	10,106	13,710	21,820	10,804	5,225	15,712	12,907		18,910	
21-Aug-20	21,541	34,657	16,017	29,338	17,772	16,200	28,452	26,870	21,197	29,934	20,232	11,191	10,729	10,106	13,871	21,834	10,804	5,225	15,760	12,923		18,930	
22-Aug-20	21,552	34,657	16,017	29,338	17,853	16,215	28,468	26,894	21,197	29,957	20,232	11,191	10,745	10,123	13,871	21,864	10,804	5,275	15,808	12,923		18,950	
23-Aug-20	21,552	34,657	16,017	29,354	17,902	16,258	28,468	26,956	21,266	30,048	20,232	11,191	10,745	10,139	13,903	21,908	10,827	5,300	15,808	12,923		18,970	
24-Aug-20	21,552	34,657	16,017	29,385	17,935	16,345	28,484	26,980	21,381	30,071	20,232	11,191	10,753	10,139	13,968	21,952	10,850	5,300	15,808	12,954		18,990	
25-Aug-20	21,552	34,665	16,017	29,385	17,935	16,374	28,484	26,993	21,381	30,071	20,293	11,191	10,753	10,139	14,000	22,041	10,872	5,351	15,808	12,954		19,000	
26-Aug-20	21,552	34,680	16,017	29,400	17,935	16,417	28,499	26,993	21,381	30,116	20,293	11,212	10,753	10,139	14,097	22,115	10,895	5,351	15,857	13,015		19,020	
27-Aug-20	21,563	34,680	16,017	29,400	17,967	16,446	28,515	26,993	21,404	30,116	20,293	11,212	10,761	10,156	14,097	22,159	10,918	5,376	15,905	13,048		19,040	
28-Aug-20	21,574	34,680	16,017	29,416	17,967	16,533	28,546	26,993	21,473	30,139	20,293	11,233	10,777	10,173	14,129	22,188	10,918	5,527	15,953	13,066		19,060	
29-Aug-20	21,584	34,688	16,017	29,416	17,967	16,562	28,546	26,993	21,496	30,185	20,293	11,297	10,777	10,173	14,161	22,188	10,918	5,527	15,953	13,088		19,080	
30-Aug-20	21,595	34,695	16,017	29,447	17,967	16,562	28,562	27,030	21,543	30,185	20,354	11,318	10,777	10,206	14,161	22,188	10,918	5,552	15,953	13,099		19,090	
31-Aug-20	21,606	34,695	16,017	29,447	17,984	16,605	28,562	27,042	21,589	30,185	20,354	11,318	10,777	10,206	14,161	22,203	10,918	5,652	15,953	13,135		19,100	

Cumulative Nass Adult Chinook Run Size to Gitwinksihlkw 2020 vs 94-19 Mean, Minimum and Maximum returns (before up river harvests)



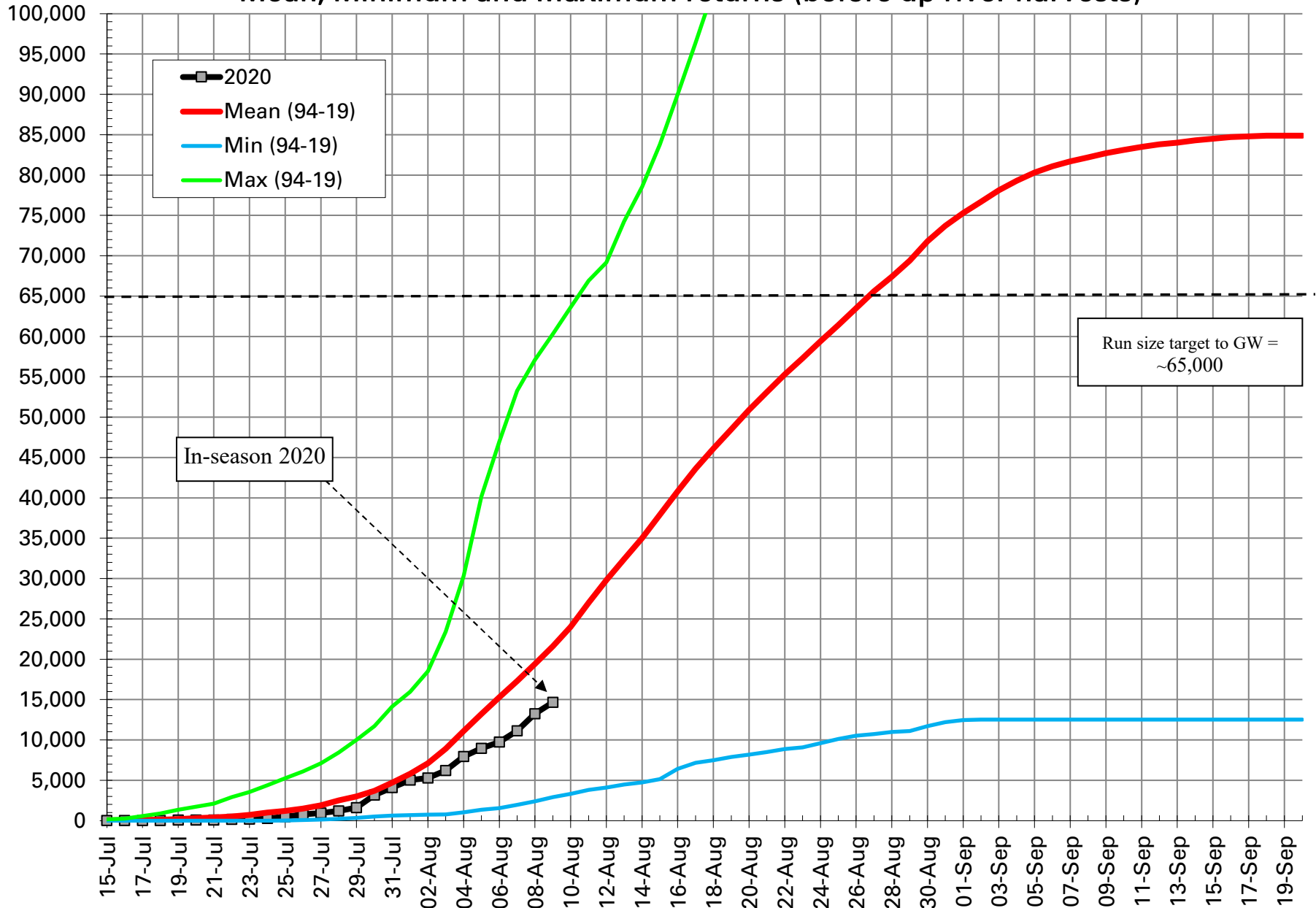
Nass Chinook (≥ 50 cm NFL) Forecasts to Gitwinksihlkw Fishwheels 2020 (Mean Run timing - 1994-19)



Cumulative Daily Run Sizes of Adult Nass River Coho Salmon (≥ 40 cm NFL) to Gitwinksihlkw Fishwheels, 2000-2020.																					In-season 2020	Mean Cum (94-19)	Daily 2020
Date	2000	2001	2002	2003	2004	2005	2006	2007	2008	2009	2010	2011	2012	2013	2014	2015	2016	2017	2018	2019			
8-Jul-20	0	0	0	0	0	0	0	0	0	0	0	0	0	0	0	0	31	21	0	0	0	2	
9-Jul-20	0	0	0	0	0	0	0	0	0	0	0	0	0	0	0	0	31	21	0	0	0	2	
10-Jul-20	0	0	0	0	0	0	0	0	0	0	0	0	0	0	0	0	62	21	0	0	0	3	
11-Jul-20	0	0	0	0	0	19	0	0	0	0	0	0	0	30	0	0	62	21	0	0	0	10	
12-Jul-20	0	0	0	32	0	39	0	0	16	32	0	0	0	30	0	0	62	42	0	0	0	10	
13-Jul-20	0	0	0	32	16	39	0	0	33	32	0	0	0	30	0	0	92	42	0	19	0	10	
14-Jul-20	0	0	33	63	16	39	0	0	33	64	0	0	0	119	0	0	123	42	0	19	16	20	16
15-Jul-20	0	0	33	127	32	39	29	0	49	64	47	0	0	119	0	23	154	84	39	19	16	30	0
16-Jul-20	0	0	33	190	65	39	29	0	66	64	71	0	0	238	0	45	246	105	39	19	16	50	0
17-Jul-20	0	0	66	190	113	96	72	0	99	159	95	0	0	565	19	113	370	189	39	19	16	90	0
18-Jul-20	25	0	66	190	161	116	173	0	99	222	142	239	26	891	37	227	585	231	39	19	16	100	0
19-Jul-20	51	0	66	317	210	154	288	0	165	318	284	342	38	1,337	74	294	739	357	39	57	82	200	67
20-Jul-20	51	0	66	412	403	193	447	25	329	477	332	512	64	1,723	148	317	1,016	588	116	113	82	300	0
21-Jul-20	101	0	265	508	500	193	562	25	379	699	474	649	103	2,110	333	385	1,416	945	154	170	82	400	0
22-Jul-20	127	0	563	698	629	251	634	25	461	1,048	616	820	115	2,912	500	521	2,002	1,366	309	264	156	500	73
23-Jul-20	152	0	629	1,301	742	771	778	25	692	1,557	711	1,195	205	3,536	870	634	2,340	1,660	309	434	198	700	43
24-Jul-20	202	0	795	1,777	1,161	1,041	908	99	972	2,065	876	1,400	231	4,398	1,314	702	3,264	1,849	463	585	279	1,000	81
25-Jul-20	228	49	894	2,411	1,629	1,368	1,124	669	1,334	2,383	1,066	1,571	384	5,259	1,684	997	3,849	2,437	733	830	470	1,200	191
26-Jul-20	329	81	1,060	2,982	2,000	1,657	1,427	818	1,647	3,145	1,350	1,912	449	6,091	2,332	1,404	4,742	2,920	1,081	1,132	768	1,500	298
27-Jul-20	405	146	1,226	3,427	2,807	1,869	1,657	1,065	2,009	4,670	1,918	2,356	564	7,102	2,924	1,654	5,327	3,635	1,312	1,396	932	1,900	164
28-Jul-20	658	211	1,755	4,347	3,404	2,197	2,118	1,462	2,503	6,259	2,416	2,698	730	8,439	4,183	2,084	6,651	3,971	2,007	1,717	1,206	2,500	274
29-Jul-20	759	454	2,451	5,172	3,968	2,525	2,997	1,635	2,767	7,816	3,363	3,074	987	10,014	5,275	2,311	7,914	5,484	2,741	2,170	1,599	3,000	393
30-Jul-20	1,088	908	3,875	6,123	4,662	2,737	3,703	2,478	3,508	8,673	4,216	4,098	1,333	11,707	6,219	2,945	9,392	6,513	2,856	2,698	3,160	3,700	1,561
31-Jul-20	1,493	1,557	4,736	7,361	5,711	3,373	4,640	2,998	4,249	10,897	6,111	5,225	1,833	14,144	7,477	3,285	11,578	8,068	4,014	3,396	4,104	4,700	945
1-Aug-20	2,100	2,432	5,664	8,122	6,904	4,221	5,879	3,791	5,188	12,708	7,437	6,352	2,755	15,957	9,513	3,624	13,426	11,640	5,134	4,585	5,032	5,800	927
2-Aug-20	2,733	3,713	6,790	9,233	7,840	4,741	7,537	4,683	5,912	15,155	9,877	8,708	3,742	18,512	12,289	4,213	15,920	15,065	6,137	5,622	5,293	7,100	261
3-Aug-20	5,365	4,945	8,678	11,295	8,421	5,338	8,891	5,426	7,049	23,225	13,074	10,587	4,793	23,415	17,675	5,391	18,537	18,678	6,330	6,604	6,223	8,900	930
4-Aug-20	12,830	6,275	11,394	13,104	9,824	5,705	10,606	6,169	8,762	30,310	16,461	12,328	5,754	27,872	22,135	7,000	20,231	23,742	8,376	7,453	7,933	11,100	1,710
5-Aug-20	16,778	7,459	13,315	14,309	11,308	6,379	12,047	7,433	11,298	40,159	20,061	13,285	6,831	32,924	24,985	7,702	23,803	28,595	10,537	8,566	8,946	13,200	1,012
6-Aug-20	20,296	8,237	14,607	16,879	13,776	6,957	13,949	8,399	13,982	46,989	23,330	14,275	8,676	35,954	28,076	8,630	29,069	31,285	13,008	9,773	9,745	15,300	800
7-Aug-20	26,218	9,761	15,865	19,290	14,373	8,210	15,505	9,192	16,897	53,280	26,006	15,641	11,201	38,956	30,704	9,423	32,363	34,037	15,015	11,434	11,130	17,300	1,385
8-Aug-20	30,520	12,809	17,886	21,892	16,922	9,540	16,990	10,282	19,137	57,093	28,588	16,632	14,405	42,818	33,295	10,443	35,843	36,306	16,868	13,132	13,240	19,400	2,110
9-Aug-20	33,202	17,285	18,648	24,272	20,261	11,236	18,820	11,620	22,069	60,301	33,348	17,485	16,814	46,860	35,349	11,598	39,076	39,038	19,029	13,943	14,671	21,600	1,431
10-Aug-20	36,745	20,998	20,238	26,461	23,262	12,835	21,024	12,883	24,589	63,606	36,546	18,305	18,916	52,565	37,552	12,459	43,818	42,946	20,033	16,283		24,000	
11-Aug-20	39,301	24,370	23,715	29,538	26,133	14,839	22,538	14,692	28,591	66,910	40,075	18,988	24,183	57,111	38,403	13,184	48,684	45,866	22,156	18,245		27,000	
12-Aug-20	41,047	29,689	28,021	32,553	27,537	16,593	24,411	16,699	31,802	69,166	43,533	19,910	29,232	62,192	39,810	13,523	52,348	48,156	24,510	20,226		29,800	
13-Aug-20	42,363	35,331	31,797	34,837	30,037	18,597	26,803	18,929	33,680	74,249	47,322	20,969	32,308	64,480	41,549	14,180	57,152	51,350	27,521	21,999		32,400	
14-Aug-20	43,452	38,963	35,142	38,327	32,957	21,970	29,195	20,737	34,684	78,538	51,538	21,754	35,666	67,689	45,029	15,630	61,863	53,808	29,335	23,697		35,000	
15-Aug-20	44,287	43,503	42,429	41,373	35,441	26,114	32,668	22,447	35,771	83,780	54,215	22,847	38,280	70,928	50,544	17,963	67,036	56,813	32,616	25,547		37,900	
16-Aug-20	45,071	47,168	52,598	44,958	37,344	27,944	35,593	24,553	37,912	89,976	56,891	23,120	41,035	73,276	56,818	20,047	70,300	59,607	35,009	27,433		40,800	
17-Aug-20	45,982	49,778	60,150	46,957	39,248	32,589	37,582	25,643	39,279	96,393	61,320	24,384	42,676	76,782	62,814	21,814	77,537	61,351	35,820	29,395		43,600	
18-Aug-20	47,323	52,243	66,641	49,114	40,764	36,867	39,498	26,931	41,832	102,938	64,778	26,125	44,662	79,664	66,738	22,811	82,925	61,897	36,939	30,301		46,100	
19-Aug-20	48,589	55,486	71,842	51,843	42,716	41,242	41,905	27,625	44,697	108,308	68,141	27,252	46,610	81,417	72,994	23,604	87,729	62,738	38,367	30,773		48,500	
20-Aug-20	49,525	57,594	76,015	54,952	45,588	42,822	44,427	29,607	47,629	113,073	71,173	28,106	48,366	83,884	78,065	24,283	91,455	64,628	40,452	31,810		50,900	
21-Aug-20	49,981	58,988	79,592	58,125	48,637	43,497	46,386	31,540	51,153	117,553	72,689	28,721	50,006	89,203	81,452	25,710	94,596	67,633	42,227	32,188		53,100	
22-Aug-20	50,132	60,237	80,652	60,536	51,121	45,520	47,712	33,299	57,922	123,907	73,399	28,721	52,133	92,441	84,098	27,545	100,077	72,150	44,389	32,188		55,300	
23-Aug-20	50,132	62,426	82,606	62,757	52,186	51,745	48,519	34,736	61,644	129,594	73,968	28,721	53,915	96,483	86,800	29,108	103,495	73,726	45,508	32,999		57,300	
24-Aug-20	50,487	63,820	83,931	65,232	53,363	57,527	49,052	36,123	64,444	136,044	74,773	29,131	55,094	100,108	89,373	30,467	107,806	75,869	47,245	35,320		59,400	
25-Aug-20	51,550	65,506	87,608	66,914	54,170	60,977	49,686	36,991	64,741	140,682	76,241	30,599	56,260	103,106	91,316	32,143	111,440	79,924	48,596	39,791		61,400	
26-Aug-20	51,980	67,112	94,431	68,817	54,734	63,848	50,248	38,229	65,613	149,388	77,189	33,980	57,016	105,605	93,796	33,503	113,257	82,824	49,985	45,546		63,500	
27-Aug-20	52,638	67,112	98,041	69,928	55,363	68,377	50,767	39,468	68,413	155,932	77,970	37,942	57,862	107,536	95,536	34,930	114,673	85,429	50,680	54,187		65,600	
28-Aug-20	54,080	67,339	99,134	70,975	55,863	72,771	51,171	40,781	72,086	161,079	78,515	42,894	58,554	110,092	97,738	35,632	117,167	90,093	51,414	58,904		67,400	
29-Aug-20	58,129	70,079	99,962	72,434	56,718	75,431	51,603	41,450	74,523	166,925	79,155	46,138	59,323										

Cumulative Nass Adult Coho Run Size to Gitwinksihlkw 2020 vs. 94-19

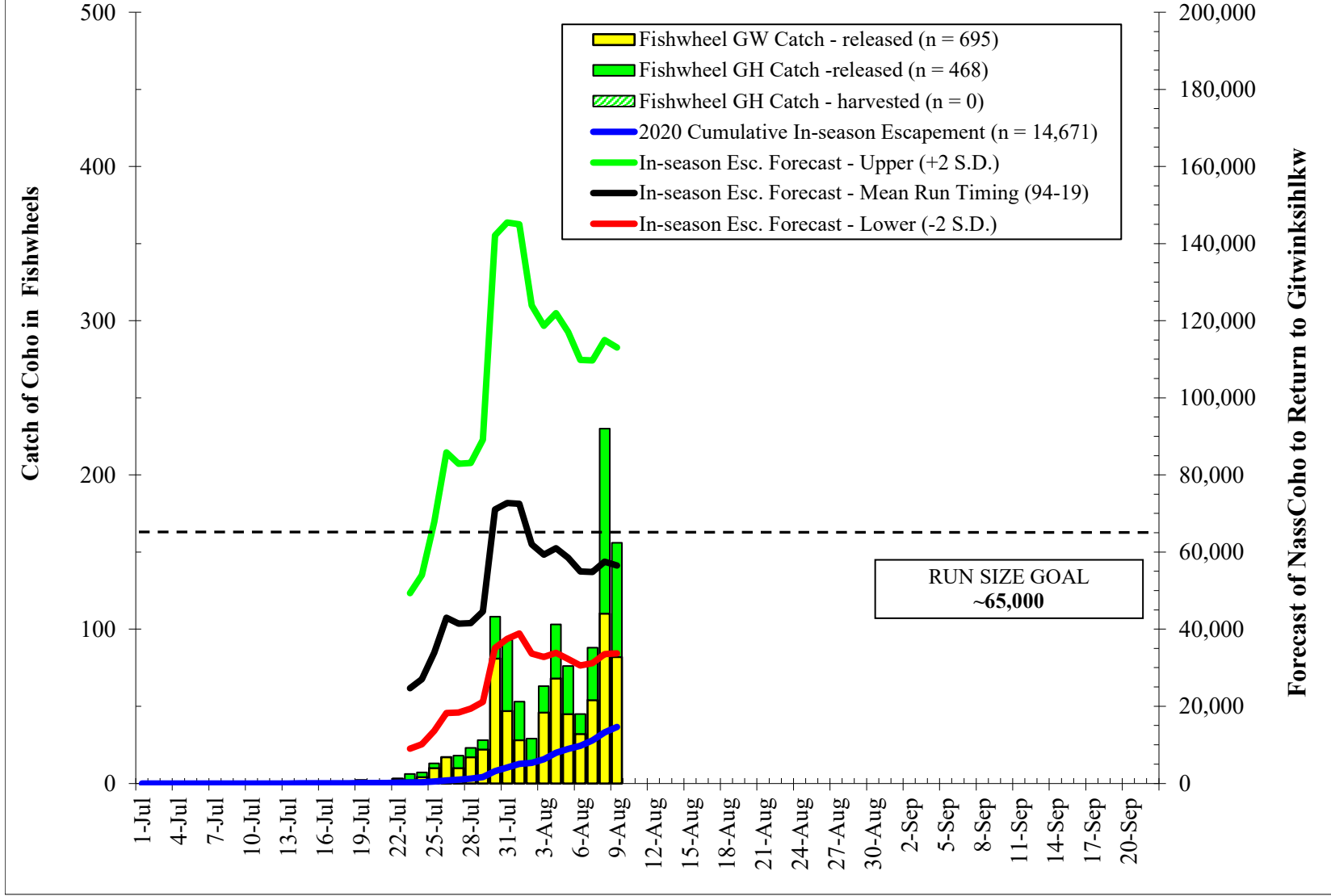
Mean, Minimum and Maximum returns (before up river harvests)



In-season 2020

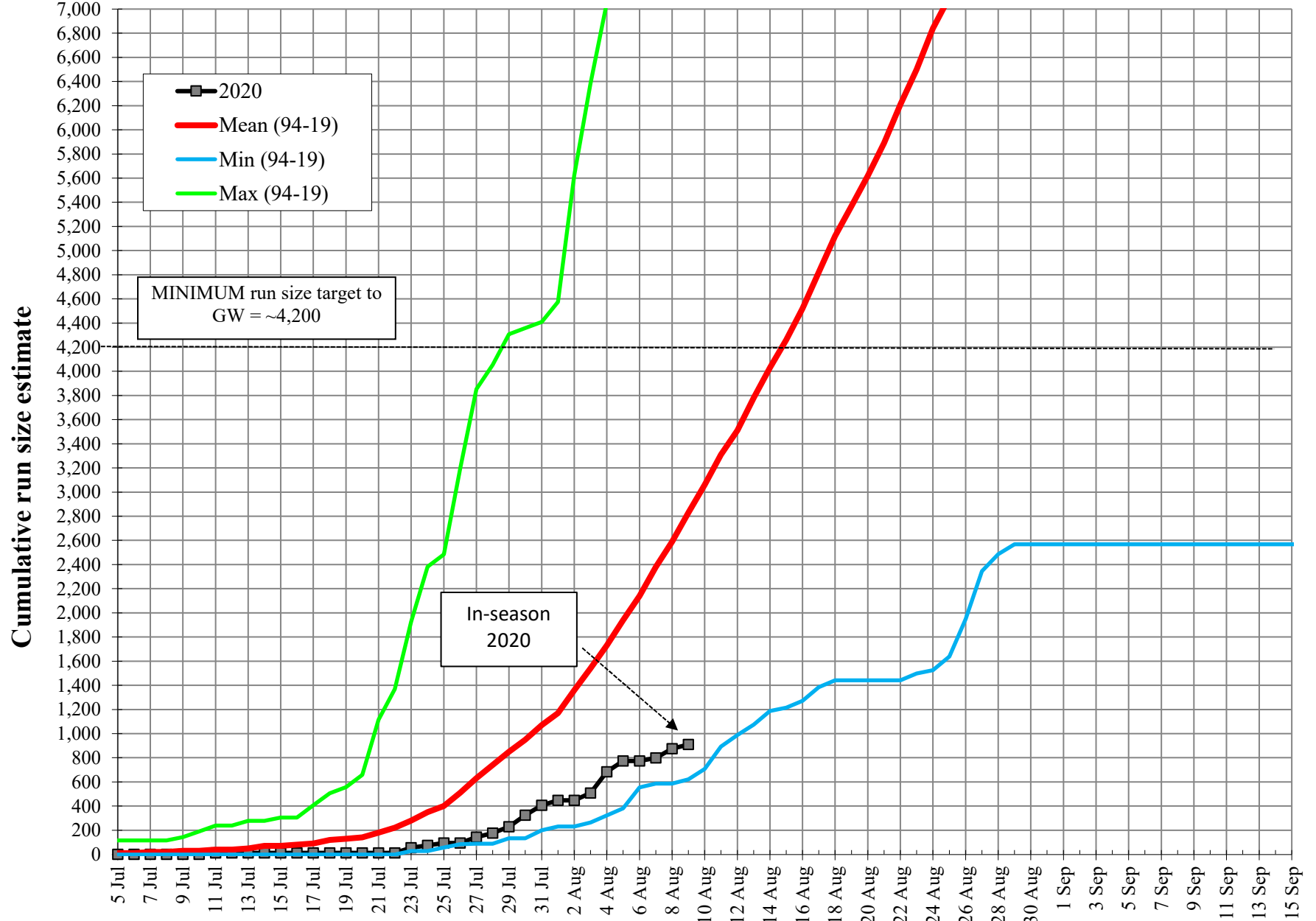
Run size target to GW =
~65,000

Nass Coho (≥ 40 cm NFL) Forecasts to Gitwinksihlkw Fishwheels 2020 (Mean Run timing - 1994-2019)

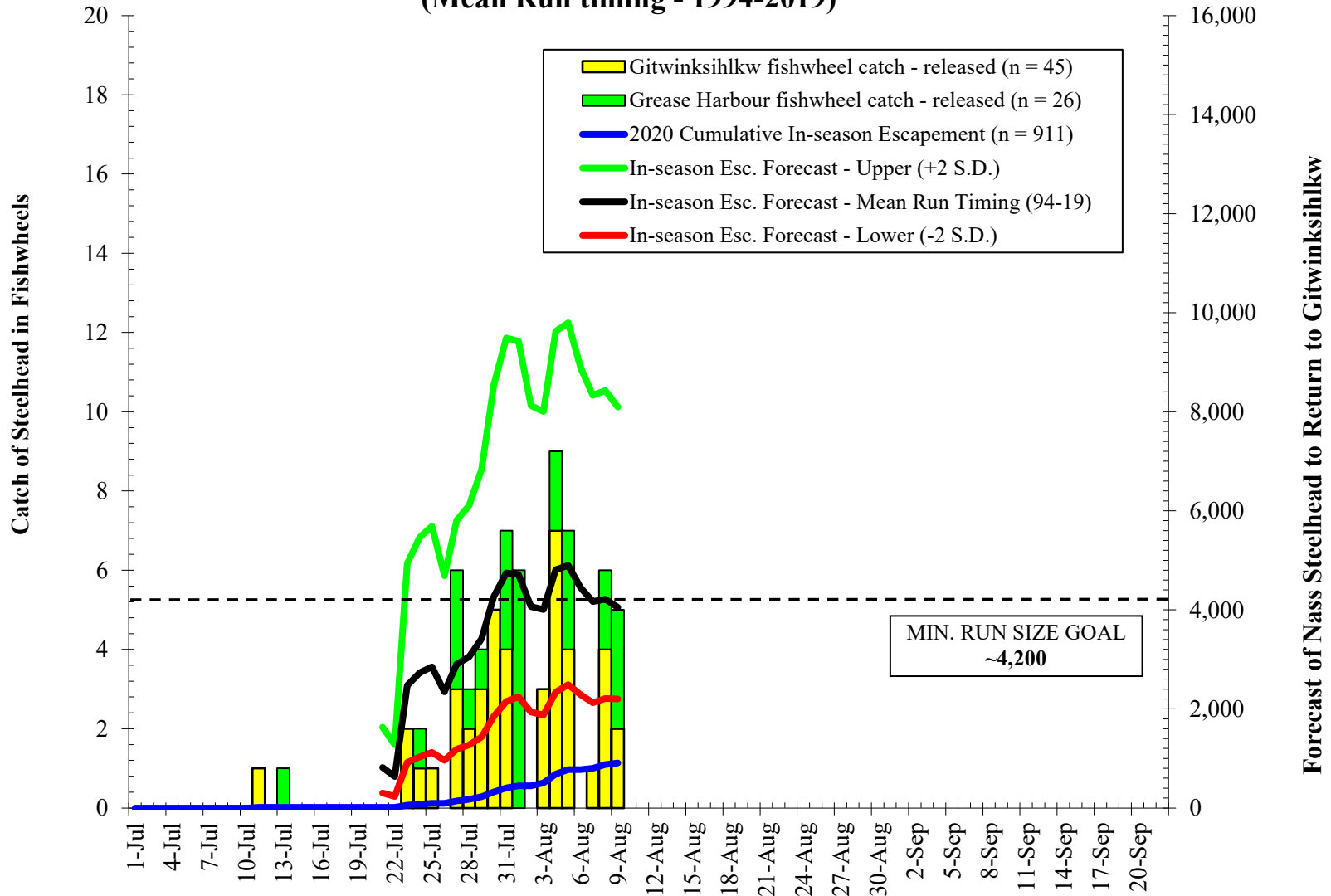


Nass Summer-run Steelhead Cumulative Daily Run Size Estimates to Gitwinksihlkw Fishwheels, 2000-2020.																					IN-SEASON	Mean Cum	Daily
Date	2000	2001	2002	2003	2004	2005	2006	2007	2008	2009	2010	2011	2012	2013	2014	2015	2016	2017	2018	2019	2020	(94-19)	2020
1-Jul-20	0	0	0	0	0	0	0	0	0	0	0	0	0	0	0	0	0	0	0	0	0	0	0
2-Jul-20	0	0	0	0	0	0	0	0	0	0	0	0	0	0	0	0	0	0	0	0	0	0	0
3-Jul-20	0	0	0	0	0	0	0	0	0	0	0	0	24	0	0	0	0	0	0	51	0	0	0
4-Jul-20	0	0	0	0	0	0	0	0	0	0	0	115	47	0	0	0	0	0	51	0	0	0	10
5-Jul-20	0	0	0	0	0	0	0	0	0	0	0	115	47	0	0	0	0	0	51	0	0	0	10
6-Jul-20	0	0	0	0	0	0	0	0	0	0	0	115	47	0	0	0	0	0	51	0	0	0	10
7-Jul-20	0	0	0	0	0	0	0	0	0	0	0	115	71	0	32	38	48	0	51	0	0	0	20
8-Jul-20	0	0	0	0	0	0	0	66	0	0	0	115	71	0	32	38	48	0	51	0	0	0	20
9-Jul-20	0	0	0	0	0	0	0	66	0	0	0	115	71	0	32	38	143	0	101	0	0	0	30
10-Jul-20	31	0	0	0	0	0	0	99	0	0	0	115	71	0	32	38	191	0	101	0	0	0	30
11-Jul-20	31	0	0	0	0	0	0	99	0	0	0	115	71	0	32	38	238	0	152	0	12	40	12
12-Jul-20	31	0	0	0	0	0	0	99	0	0	0	115	71	0	63	38	238	0	152	0	12	40	0
13-Jul-20	31	0	0	0	0	0	0	99	0	0	0	115	71	0	95	77	238	0	152	0	12	50	0
14-Jul-20	31	28	0	0	0	41	0	99	0	0	0	115	71	0	158	115	238	0	253	85	12	70	0
15-Jul-20	31	28	0	0	0	41	0	99	0	0	0	115	71	0	189	115	238	0	304	85	12	70	0
16-Jul-20	61	28	0	0	0	41	29	99	0	0	76	173	71	0	189	153	238	0	304	85	12	80	0
17-Jul-20	154	56	51	0	0	41	29	99	0	0	76	173	71	0	189	230	238	0	405	85	12	90	0
18-Jul-20	154	56	51	0	0	82	29	132	81	0	76	288	71	0	221	345	238	0	507	85	12	120	0
19-Jul-20	154	56	51	0	17	82	29	132	122	0	152	403	71	0	221	345	238	0	557	85	12	130	0
20-Jul-20	154	56	51	0	34	82	29	132	122	0	152	460	71	0	221	383	238	29	659	85	12	140	0
21-Jul-20	154	56	51	0	51	82	58	132	122	0	303	460	71	0	252	383	238	57	1,115	85	12	180	0
22-Jul-20	154	56	51	59	51	164	58	132	162	0	455	460	95	52	347	383	381	57	1,368	85	12	220	0
23-Jul-20	184	56	103	59	51	246	58	132	244	51	531	633	95	104	568	383	381	57	1,926	85	54	280	43
24-Jul-20	307	56	154	176	68	246	58	132	325	102	683	748	142	157	694	421	572	57	2,382	113	75	350	20
25-Jul-20	307	83	206	411	68	287	88	132	487	102	683	863	166	261	884	421	619	114	2,483	113	94	400	19
26-Jul-20	369	111	206	764	85	287	88	132	609	203	834	863	213	261	1,041	536	858	200	3,193	141	94	510	0
27-Jul-20	369	167	257	823	169	328	88	132	731	305	1,093	1,093	237	313	1,199	575	1,668	257	3,852	141	143	630	49
28-Jul-20	430	195	360	1,058	186	328	88	132	893	457	1,290	1,266	261	418	1,326	728	2,478	286	4,054	141	175	740	32
29-Jul-20	461	278	565	1,352	254	328	146	132	974	660	1,365	1,381	261	679	1,420	766	3,145	286	4,308	141	229	850	54
30-Jul-20	522	306	925	1,646	271	328	175	132	1,218	711	1,441	1,381	356	783	1,452	920	3,526	343	4,358	226	325	950	96
31-Jul-20	676	390	1,285	1,940	305	369	234	198	1,421	711	1,669	1,438	403	836	1,578	996	4,146	372	4,409	254	405	1,070	80
1-Aug-20	738	445	1,593	2,116	423	574	234	232	1,543	711	1,896	1,496	545	836	1,799	1,035	4,574	458	4,510	367	447	1,170	41
2-Aug-20	830	918	2,004	2,762	525	656	263	232	1,746	711	2,124	1,553	711	836	2,241	1,035	5,623	658	4,713	509	447	1,360	0
3-Aug-20	1,199	1,057	2,107	2,880	609	697	292	265	1,949	914	2,427	1,726	924	836	2,903	1,149	6,385	829	4,814	565	507	1,540	61
4-Aug-20	1,813	1,197	2,313	3,056	745	697	322	364	1,989	1,321	2,427	1,841	1,090	836	3,156	1,494	7,052	972	5,423	593	683	1,730	176
5-Aug-20	2,428	1,197	2,724	3,409	846	738	380	430	2,355	1,727	2,731	1,956	1,161	836	3,503	1,724	7,481	1,144	5,879	593	773	1,940	90
6-Aug-20	2,735	1,224	2,827	3,585	931	861	556	562	2,476	1,879	2,807	2,014	1,327	888	3,977	1,916	8,625	1,201	6,943	593	773	2,140	0
7-Aug-20	3,135	1,336	2,878	3,879	948	902	702	629	2,720	2,692	2,958	2,129	1,517	888	4,229	2,184	9,578	1,287	8,109	622	799	2,380	26
8-Aug-20	3,381	1,558	3,135	4,232	1,049	1,066	789	662	2,842	3,200	2,958	2,531	1,849	992	4,545	2,529	9,911	1,430	9,122	622	876	2,590	77
9-Aug-20	4,088	2,087	3,289	4,820	1,100	1,147	819	728	2,923	4,064	3,338	2,762	2,015	1,201	4,734	2,759	9,911	1,459	10,288	622	911	2,830	35
10-Aug-20	4,610	2,282	3,289	5,407	1,371	1,229	936	827	3,004	4,521	3,793	2,992	2,275	1,410	5,144	2,950	10,340	1,659	10,643	706		3,060	
11-Aug-20	5,286	2,588	3,341	5,995	1,557	1,270	994	893	3,166	4,673	4,399	3,510	2,631	1,515	5,207	3,142	10,864	1,716	10,845	961		3,310	
12-Aug-20	5,655	3,033	3,546	6,465	1,659	1,352	1,082	1,092	3,248	4,673	4,627	3,797	3,200	1,619	5,302	3,257	11,103	1,859	11,251	989		3,510	
13-Aug-20	5,963	3,311	3,803	6,877	1,794	1,475	1,199	1,224	3,329	5,689	4,855	4,027	3,460	1,724	5,460	3,257	11,579	2,288	12,568	1,074		3,780	
14-Aug-20	6,331	3,423	3,906	7,406	2,099	1,598	1,257	1,323	3,329	6,654	5,765	4,315	3,934	1,724	5,681	3,525	12,103	2,345	13,075	1,187		4,030	
15-Aug-20	6,608	3,701	3,906	7,700	2,302	1,598	1,316	1,522	3,410	7,467	6,144	4,488	4,622	1,724	5,965	3,640	12,866	2,517	13,785	1,215		4,260	
16-Aug-20	6,946	3,896	4,317	7,935	2,336	1,639	1,403	1,820	3,532	7,873	6,751	4,545	5,120	1,776	6,186	3,985	13,104	3,003	14,595	1,271		4,520	
17-Aug-20	7,100	4,257	5,088	8,405	2,471	1,639	1,550	2,051	3,694	8,533	7,130	4,545	5,594	1,828	6,470	4,636	13,580	3,117	15,710	1,384		4,820	
18-Aug-20	7,315	4,369	5,705	8,522	2,589	1,926	1,667	2,183	3,816	9,651	7,358	4,545	5,996	2,089	6,817	4,943	13,962	3,117	17,281	1,441		5,120	
19-Aug-20	7,499	4,703	6,013	8,640	2,657	1,967	1,900	2,250	4,222	10,159	7,509	4,660	6,518	2,089	7,322	5,173	14,819	3,117	17,991	1,441		5,370	
20-Aug-20	7,807	4,897	6,270	9,169	2,742	1,967	2,076	2,283	4,912	10,464	7,661	4,775	6,850	2,194	7,606	5,249	15,343	3,146	19,106	1,441		5,620	
21-Aug-20	8,022	5,287	6,733	9,615	2,843	1,967	2,339	2,448	5,237	10,565	8,040	4,775	7,229	2,194	8,395	5,747	15,439	3,289	19,410	1,441		5,890	
22-Aug-20	8,052	5,565	7,041	10,286	3,046	1,967	2,456	2,514	6,008	11,276	8,344	4,775	7,513	2,455	9,058	6,705	15,677	3,575	19,765	1,441		6,210	
23-Aug-20	8,052	5,704	7,195	10,580	3,165	2,377	2,631	2,713	6,658	12,292	8,420	4,775	7,798	2,820	10,131	7,203	16,106	3,661	19,815	1,497		6,500	
24-Aug-20	8,052	6,205	7,195	11,344	3,216	2,828	2,865	2,845	7,429	12,648	8,875	4,890	8,082	3,238	11,298	7,586	16,630	3,889	20,069	1,526		6,840	
25-Aug-20	8,175	6,567	7,247	11,873	3,266	3,197	3,011	3,011	7,429	13,308	9,178	5,063	8,343	3,343	12,024	7,970	16,964	4,290	20,424	1,639		7,100	
26-Aug-20	8,206	6,957	7,658	12,166	3,419	3,320	3,099	3,143	7,429	13,664	9,482	5,178	8,485	3,447	13,066	8,813	17,059	4,547	20,829	1,949		7,380	

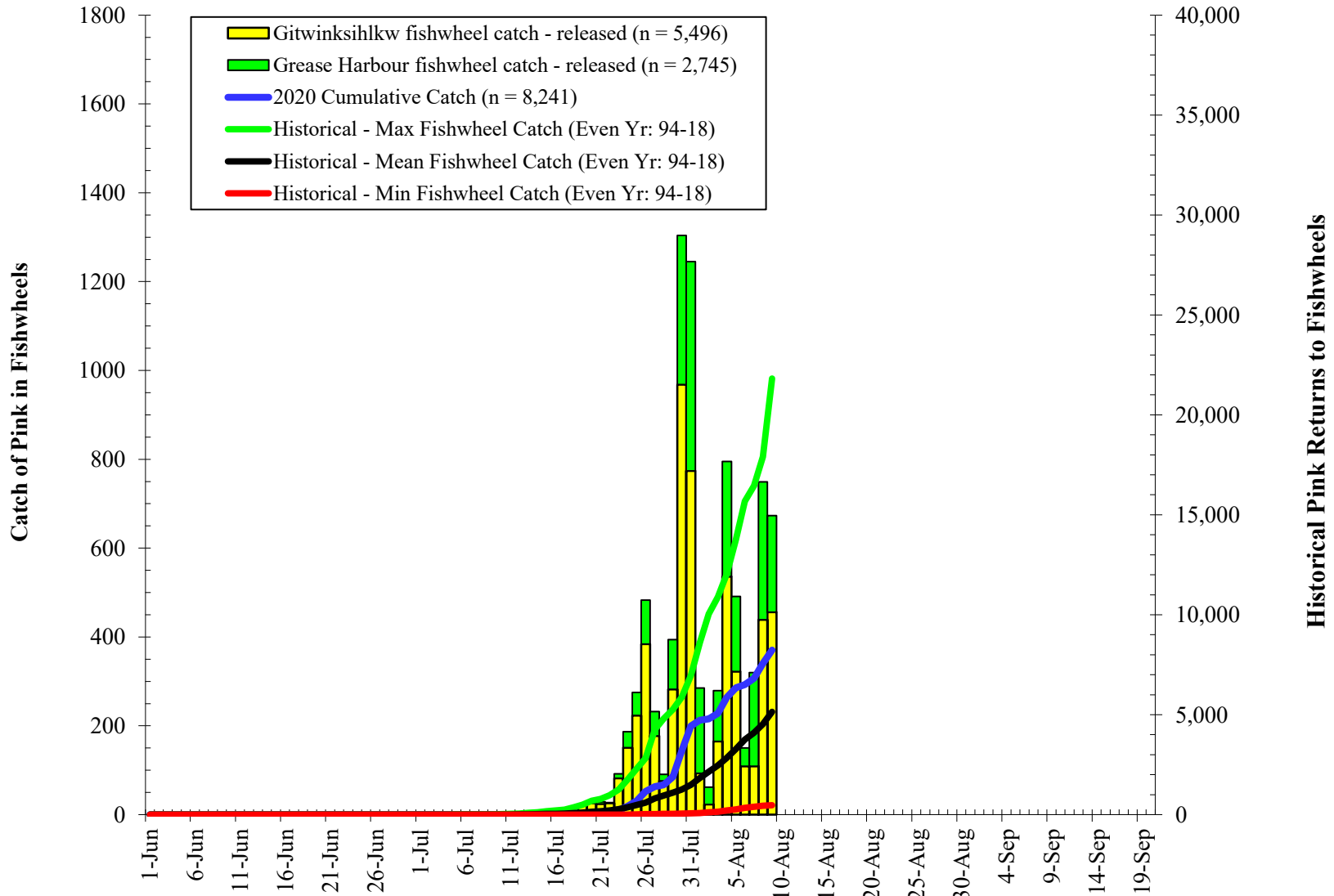
Cumulative Nass Adult Summer-run Steelhead Return to Gitwinksihlkw 2020 vs. 94-19 Mean, Minimum and Maximum returns (before up river harvests)



Nass Summer Run Steelhead Forecasts to Gitwinksihlkw Fishwheels 2020 (Mean Run timing - 1994-2019)



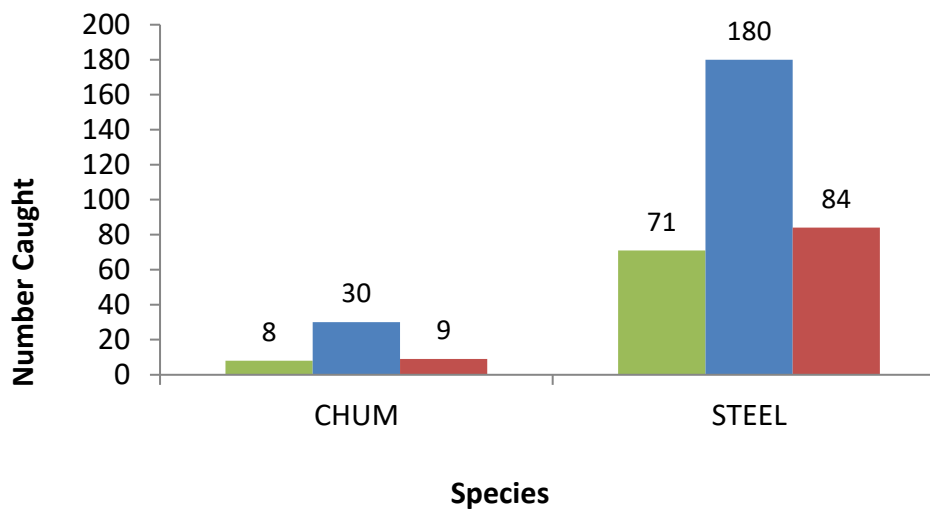
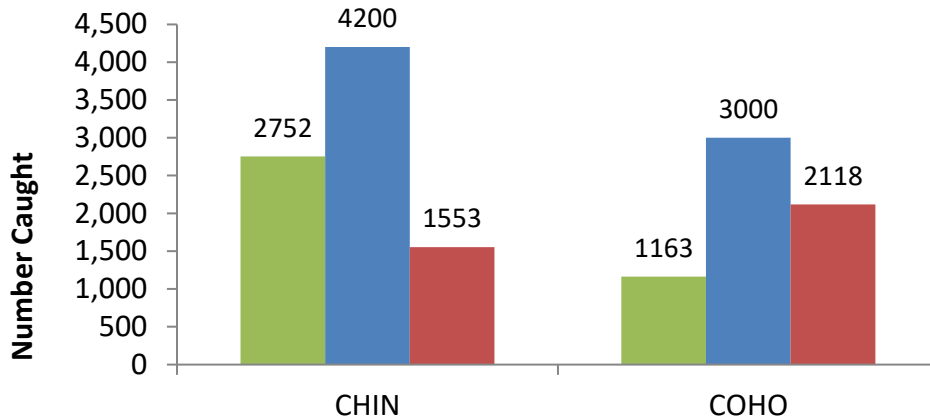
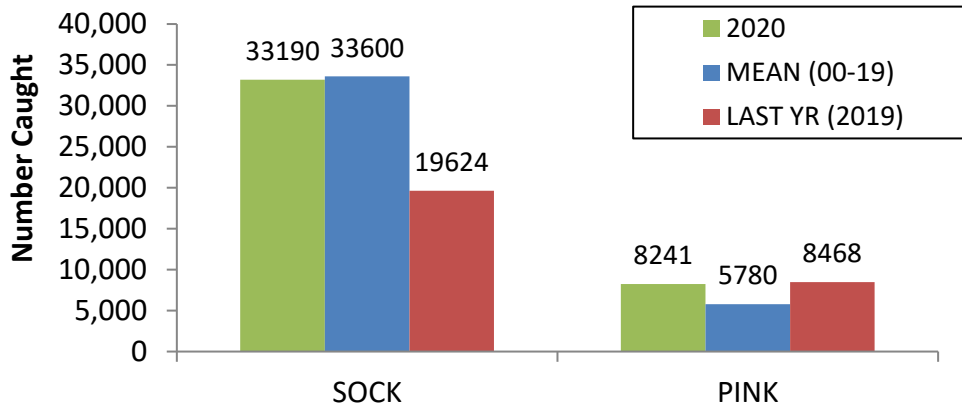
Nass Pink Salmon Returns to Gitwinksihlkw and Grease Harbour Fishwheels 2020



2020 Nass Fishwheel Catches

	GW		GW Total	GH				GH Total	Grand Total
Data	FW1	FW2		FW3	FW4	FW5	FW6		
Chin-adult catch	167	647	814	560	0	786	592	1,938	2,752
Chin-tagged	149	594	743	506	0	722	519	1,747	2,490
Chin-recaps	21	27	48	122	0	154	178	454	502
Chin-Jacks	123	372	495	578	0	533	777	1888	2383
Sum of CH Harv	0	0	0	0	0	0	0	0	0
Sockeye-adult catch	4,179	8,239	12,418	6,131	0	7,940	6,701	20,772	33,190
Sockeye-tagged	2,596	4,558	7,154	0	0	0	0	0	7,154
Sockeye-recaps	270	157	427	155	0	210	169	534	961
Sockeye_jacks	284	870	1154	244	0	261	284	789	1943
Sum of sk_harvest_total	0	0	0	0	0	0	0	0	0
Coho-adult catch	381	314	695	208	0	133	127	468	1,163
Coho-tagged	337	254	591	0	0	0	0	0	591
Coho-recaps	12	13	25	5	0	4	7	16	41
Coho-jack	9	8	17	0	0	0	2	2	19
Sum of co_harvest_total	0	0	0	0	0	0	0	0	0
Steel-adult catch	10	35	45	5	0	2	19	26	71
Steel-Adipose marked	9	29	38	5	0	2	18	25	63
Steel-unmarked	1	6	7	0	0	0	1	1	8
Steel-recap-total	0	2	2	0	0	0	2	2	4
Pacific Lamprey-catch	2	81	83	86	0	140	183	409	492
Lamprey-tagged	2	71	73	67	0	96	150	313	386
Lamprey-released	0	10	10	19	0	44	33	96	106
Lamprey-recaps	0	2	2	1	0	2	6	9	11
River Lamprey	0	0	0	0	0	0	0	0	0
Pink-adult-catch	1796	3700	5496	1500	0	604	641	2745	8241
Chum-adult-catch	3	2	5	3	0	0	0	3	8
Chum-tagged	2	2	4	2	0	0	0	2	6
Chum-punched	0	0	0	0	0	0	0	0	0
Chum-recaps	0	0	0	0	0	2	1	3	3
Rainbow Trout	11	24	35	15	0	21	24	60	95
Dolly Varden	8	38	46	0	0	0	5	5	51
Dolly-tagged	5	12	17	0	0	0	2	2	19
Whitefish	4	9	13	3	0	6	8	17	30
Peamouth Chub	0	2	2	10	0	2	11	23	25
Cutthroat Trout	6	6	12	0	0	0	3	3	15
Sculpin	5	0	5	0	0	0	4	4	9
Pikeminnow	1	1	2	1	0	1	2	4	6
Suckers	2	0	2	0	0	0	1	1	3
Redside Shiner	0	1	1	1	0	0	1	2	3

Nass Fishwheel Catches 2020 - All (May 31 - Aug 9)



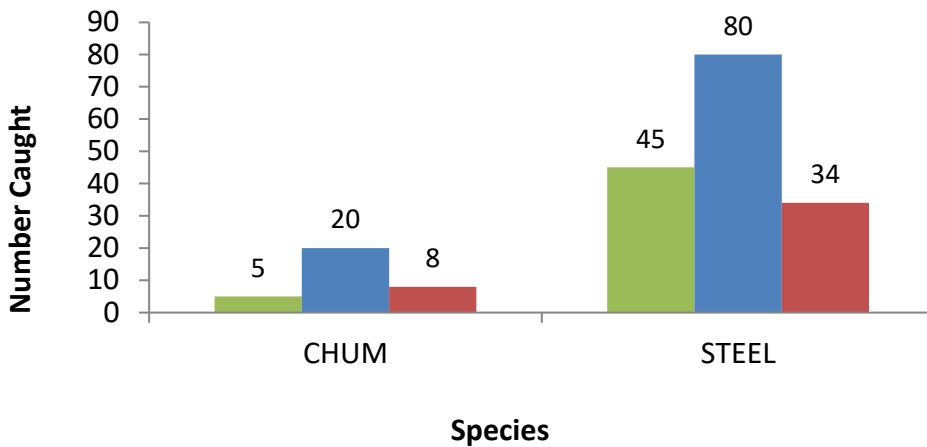
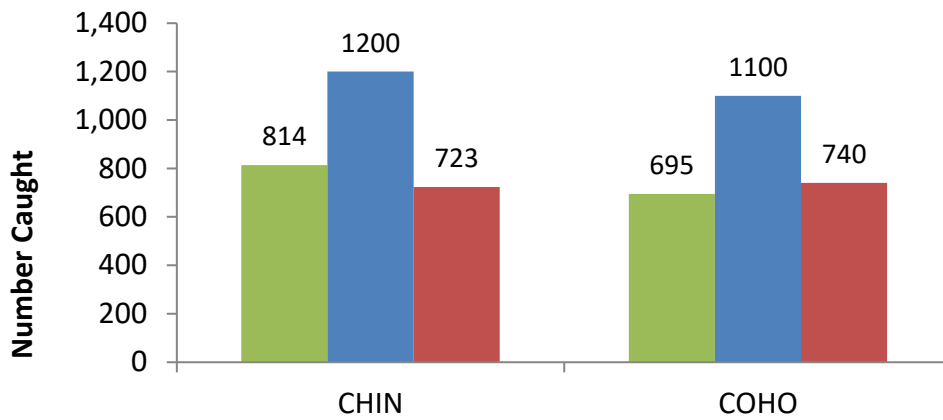
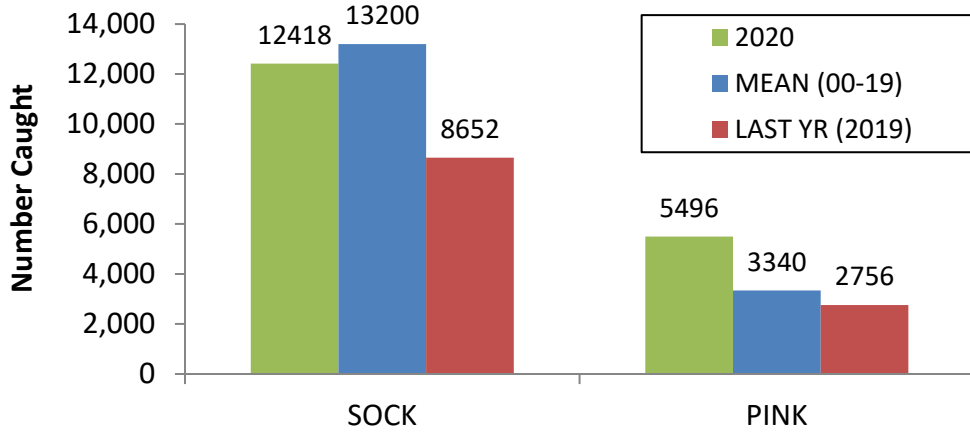
Chinook (all FWs)																							
Week Ending (Sat)	Stat wk	2000	2001	2002	2003	2004	2005	2006	2007	2008	2009	2010	2011	2012	2013	2014	2015	2016	2017	2018	2019	2020	00-19 Cum Mean
06-Jun	23	-	-	-	-	-	1	-	-	1	-	15	-	9	4	9	6	5	6	6	26	8	4
13-Jun	24	3	169	-	-	6	30	10	-	39	-	73	28	24	35	114	70	69	15	12	77	24	39
20-Jun	25	277	454	-	568	424	321	23	3	290	56	281	188	76	97	386	478	228	87	62	186	57	224
27-Jun	26	1,631	1,421	736	3,339	428	1,992	1,958	664	955	822	639	495	80	156	564	1,344	574	171	177	796	98	947
04-Jul	27	1,954	5,589	3,835	3,923	1,076	2,770	5,641	1,994	1,390	5,836	854	1,203	1,265	1,455	1,101	2,581	852	251	545	935	292	2,253
11-Jul	28	2,355	8,812	6,284	4,921	2,300	3,552	6,146	5,509	2,947	6,104	958	1,529	2,507	1,849	1,410	2,886	1,147	450	667	1,161	1,706	3,175
18-Jul	29	4,305	11,373	6,525	5,276	3,001	3,863	8,592	5,564	4,131	6,412	1,022	1,642	2,646	1,905	1,544	3,118	1,207	558	737	1,423	2,213	3,742
25-Jul	30	4,576	11,458	6,606	5,579	3,092	3,940	8,771	8,152	4,219	6,820	1,058	1,725	3,364	1,930	1,611	3,166	1,243	597	787	1,501	2,547	4,010
01-Aug	31	4,628	11,860	6,692	5,712	3,164	4,003	8,931	9,121	4,265	6,899	1,084	1,756	3,796	1,947	1,637	3,276	1,315	621	801	1,542	2,725	4,153
08-Aug	32	4,881	11,996	6,746	5,754	3,220	4,040	9,026	9,316	4,285	7,034	1,100	1,768	3,965	1,955	1,660	3,322	1,346	653	824	1,553	2,748	4,222
15-Aug	33	4,969	12,070	6,760	5,778	3,280	4,053	9,055	9,379	4,299	7,090	1,121	1,771	4,030	1,964	1,665	3,341	1,363	666	836	1,571		4,253
22-Aug	34	4,986	12,084	6,777	5,791	3,300	4,062	9,075	9,409	4,308	7,112	1,125	1,772	4,050	1,973	1,675	3,367	1,375	672	845	1,583		4,267
29-Aug	35	4,993	12,098	6,778	5,798	3,312	4,095	9,081	9,421	4,322	7,126	1,130	1,779	4,058	1,976	1,685	3,392	1,383	688	850	1,603		4,278
05-Sep	36	4,999	12,103	6,784	5,802	3,314	4,101	9,089	9,431	4,331	7,130	1,134	1,792	4,059	1,980	1,689	3,397	1,386	695	856	1,626		4,285
12-Sep	37	5,001	12,106	6,785	5,802	3,314	4,107	9,089	9,437	4,331	7,132	1,138	1,792	4,059	1,981	1,693	3,397	1,389	696	858	1,630		4,287
19-Sep	38	5,002	12,106	6,785	5,802	3,314	4,111	9,089	9,438	4,331	7,132	1,138	1,794	4,059	1,981	1,693	3,397	1,389	696	859	1,631		4,287
Grand Total		5,002	12,106	6,785	5,802	3,314	4,111	9,089	9,438	4,331	7,132	1,138	1,794	4,059	1,981	1,693	3,397	1,389	696	859	1,631	2,752	4,287
Sockeye (all FWs)																							
Week Ending (Sat)	Stat wk	2000	2001	2002	2003	2004	2005	2006	2007	2008	2009	2010	2011	2012	2013	2014	2015	2016	2017	2018	2019	2020	00-19 Cum Mean
06-Jun	23	-	-	-	-	-	-	-	-	7	5	10	1	179	23	33	12	10	7	2	8	2	15
13-Jun	24	4	130	-	-	46	43	12	-	93	5	48	79	509	311	680	131	81	20	12	80	18	114
20-Jun	25	433	484	-	1,507	934	676	107	26	749	565	344	917	908	1,220	3,567	1,405	205	259	141	652	36	755
27-Jun	26	3,232	1,635	5,168	5,920	1,191	3,138	1,936	1,214	4,653	3,489	1,957	2,677	1,123	5,242	7,589	4,583	1,095	1,030	835	2,443	165	3,008
04-Jul	27	7,217	3,874	17,629	9,581	4,614	8,347	7,525	3,600	8,553	8,822	3,518	5,054	15,799	24,051	13,705	10,821	2,365	2,855	3,236	4,423	1,116	8,279
11-Jul	28	13,877	6,673	31,153	15,454	14,338	12,567	14,124	6,767	16,657	12,283	7,881	7,741	21,513	26,539	16,587	16,580	4,879	7,752	5,162	7,009	9,289	13,277
18-Jul	29	19,067	12,191	35,667	20,671	20,687	16,755	20,990	7,156	22,195	17,206	10,681	14,137	24,738	28,021	19,395	22,500	7,609	11,113	6,991	10,012	13,849	17,389
25-Jul	30	21,208	15,132	41,182	27,655	24,373	21,095	25,858	16,895	25,664	21,113	13,156	23,128	38,547	31,293	23,428	27,403	11,679	14,181	10,030	12,581	20,300	22,280
01-Aug	31	22,744	25,158	48,601	36,940	28,086	26,082	33,119	25,061	28,310	24,552	16,633	29,560	49,267	34,131	26,394	39,195	18,413	18,756	13,314	16,020	28,142	28,017
08-Aug	32	27,862	29,355	52,663	41,714	32,420	29,180	38,949	31,407	30,085	34,100	19,948	32,004	56,660	36,383	29,401	48,769	24,325	25,819	18,423	19,359	32,497	32,941
15-Aug	33	29,803	31,182	55,063	44,953	38,616	31,862	42,402	35,644	31,580	40,019	23,173	33,254	60,286	37,865	32,090	56,655	29,889	31,998	21,944	23,650		36,596
22-Aug	34	30,477	31,816	57,336	46,745	41,213	33,507	46,441	37,055	33,540	41,726	24,655	33,974	61,794	38,653	34,697	63,066	33,552	36,114	24,307	25,389		38,803
29-Aug	35	31,060	32,100	57,737	47,350	42,819	38,699	48,906	38,036	34,263	42,719	25,159	35,797	62,219	38,964	36,935	67,738	36,131	40,409	25,954	30,613		40,680
05-Sep	36	31,968	32,666	58,598	47,556	43,470	39,880	50,769	38,536	34,697	43,264	25,382	37,918	62,334	39,157	38,066	70,099	38,285	43,689	27,378	35,261		41,949
12-Sep	37	32,780	32,806	58,728	47,556	43,782	40,138	50,769	38,882	34,702	43,426	25,663	37,993	62,384	39,184	38,330	70,737	38,677	44,152	27,669	35,882		42,212
19-Sep	38	33,191	32,821	58,728	47,556	43,782	40,271	50,769	38,934	34,702	43,426	25,692	38,048	62,385	39,184	38,345	70,737	38,677	44,152	27,709	35,894		42,250
Grand Total		33,191	32,821	58,728	47,556	43,782	40,271	50,769	38,934	34,702	43,426	25,692	38,048	62,385	39,184	38,345	70,737	38,677	44,152	27,709	35,894	32,497	42,250
Coho (all FWs)																							
Week Ending (Sat)	Stat wk	2000	2001	2002	2003	2004	2005	2006	2007	2008	2009	2010	2011	2012	2013	2014	2015	2016	2017	2018	2019	2020	00-19 Cum Mean
06-Jun	23	-	-	-	-	-	-	-	-	-	-	-	-	-	-	-	-	-	-	-	-	0	-
13-Jun	24	-	-	-	-	-	-	-	-	-	-	-	-	-	-	-	-	-	-	-	-	0	-
20-Jun	25	-	-	-	-	-	-	-	-	-	-	-	-	-	-	-	-	-	-	-	1	0	0
27-Jun	26	-	-	-	-	-	-	-	-	-	-	-	-	-	-	-	-	-	-	-	1	0	0
04-Jul	27	-	-	-	-	-	-	-	-	-	-	-	-	-	-	-	-	-	-	-	2	0	0
11-Jul	28	-	-	-	-	-	1	-	-	-	2	-	-	-	1	-	1	2	1	-	4	0	1
18-Jul	29	1	-	3	6	13	8	15	-	6	12	10	14	2	39	3	30	22	16	1	14	1	11
25-Jul	30	18	3	39	150	138	143	126	31	144	140	87	76	34	400	137	103	169	178	31	113	33	113
01-Aug	31	137	216	329	840	778	736	731	385	594	635	580	414	333	1,530	865	328	1,212	1,200	236	605	373	634
08-Aug	32	2,143	1,748	1,900	2,212	2,281	1,923	2,590	1,625	2,498	4,478	2,636	1,404	2,615	4,572	4,169	1,431	3,492	5,091	1,015	1,932	1,007	2,588
15-Aug	33	3,577	8,257	3,616	4,516	6,626	3,737	5,155	4,152	4,393	7,588	6,949	2,007	7,803	7,692	6,520	2,762	7,208	9,377	2,474	4,728		5,457
22-Aug	34	4,486	11,656	8,607	7,419	9,187	5,700	7,797	6,413	7,960	12,171	10,164	2,360	11,391	10,890	11,670	4,391	11,347	13,079	3,888	6,149		8,336
29-Aug	35	5,878	13,847	9,457	8,916	10,950	12,229	8,837	8,929	11,066	16,411	11,407	3,819	13,570	12,993	14,374	5,503	13,846	18,435	4,856	12,044		10,868
05-Sep	36	7,511	19,916	13,835	9,460	11,577	13,977	9,671	10,358	14,589	19,405	11,873	5,402	14,811	14,136	16,345	6,473	15,403	22,319	5,431	15,253		12,887
12-Sep	37	8,185	22,630	14,556	9,460	11,788	14,328	9,671	11,477	14,640	20,270	12,677	5,480	15,497	14,534	17,087	6,616	15,690	22,908	5,511	15,710		13,436
19-Sep	38	8,349	22,705	14,556	9,460	11,788	14,462	9,671	11,585	14,640	20,270	12,804	5,672	15,608	14,555	17,137	6,616	15,690	22,908	5,511	15,724		13,486
Grand Total		8,349	22,705	14,556	9,460	11,788	14,462	9,671	11,585	14,640	20,270	12,804	5,672	15,608	14,555	17,137	6,616	15,690	22,908	5,511	15,724	1,163	13,486

Steelhead (all FWs)																							
Week Ending (Sat)	Stat wk	2000	2001	2002	2003	2004	2005	2006	2007	2008	2009	2010	2011	2012	2013	2014	2015	2016	2017	2018	2019	2020	00-19 Cum Mean
06-Jun	23	-	-	-	-	-	1	-	-	-	-	5	-	2	1	3	2	1	1	-	9	2	1
13-Jun	24	-	6	-	-	1	2	2	-	5	-	12	7	11	5	7	9	1	3	1	12	2	4
20-Jun	25	1	9	-	-	3	5	2	-	6	7	15	13	11	7	8	21	4	11	4	13	2	7
27-Jun	26	2	10	-	-	3	8	6	2	6	10	16	21	11	7	10	21	4	13	4	14	2	8
04-Jul	27	2	10	2	1	4	8	6	3	6	10	16	27	17	7	11	23	4	14	6	16	2	10
11-Jul	28	4	10	6	1	4	9	6	6	6	10	16	27	18	7	13	24	14	15	10	17	3	11
18-Jul	29	9	12	8	2	4	11	7	7	8	10	18	30	18	7	20	38	16	15	22	21	4	14
25-Jul	30	18	14	14	10	10	19	11	7	26	13	31	45	23	20	53	41	29	25	80	25	9	26
01-Aug	31	32	42	67	50	41	40	25	13	81	27	73	74	40	48	106	85	221	58	151	46	40	66
08-Aug	32	195	132	242	125	105	90	66	57	163	123	136	112	133	108	298	191	446	151	285	84	66	162
15-Aug	33	399	370	286	250	296	141	128	156	213	427	360	183	391	182	425	279	592	294	457	137		298
22-Aug	34	533	552	634	359	384	168	243	272	368	729	573	210	749	294	719	461	754	412	798	162		469
29-Aug	35	608	677	662	500	570	591	375	456	530	1,121	792	434	1,034	457	1,181	624	911	645	930	274		669
05-Sep	36	979	1,098	830	583	631	687	466	607	840	1,552	879	891	1,305	571	1,382	714	1,027	912	1,031	613		880
12-Sep	37	1,130	1,417	1,100	583	656	699	466	732	844	1,667	1,132	903	1,511	610	1,470	778	1,070	982	1,071	705		976
19-Sep	38	1,198	1,435	1,100	583	656	714	466	774	844	1,667	1,180	960	1,525	612	1,472	778	1,070	982	1,078	710		990
Grand Total		1,198	1,435	1,100	583	656	714	466	774	844	1,667	1,180	960	1,525	612	1,472	778	1,070	982	1,078	710	66	990

Pinks (all FWs)																							
Week Ending (Sat)	Stat wk	2000	2001	2002	2003	2004	2005	2006	2007	2008	2009	2010	2011	2012	2013	2014	2015	2016	2017	2018	2019	2020	MEAN ODD YR (03-17)
06-Jun	23	-	-	-	-	-	-	-	-	-	-	-	-	-	-	-	-	-	-	-	-	0	-
13-Jun	24	-	-	-	-	-	-	-	-	-	-	-	-	-	-	-	-	-	-	-	-	0	-
20-Jun	25	-	-	-	-	-	-	-	-	-	-	-	-	-	-	-	-	-	-	-	-	0	-
27-Jun	26	-	-	-	-	-	-	-	-	-	-	-	-	-	-	-	-	-	-	-	-	0	-
04-Jul	27	-	1	-	4	4	14	1	-	-	6	1	1	-	6	-	28	-	1	-	13	0	5
11-Jul	28	-	13	4	139	32	63	5	1	1	22	9	15	-	145	4	137	33	21	6	45	1	52
18-Jul	29	41	78	53	2,188	352	1,097	42	1	40	262	38	197	-	504	91	552	151	167	57	381	30	463
25-Jul	30	151	209	196	10,580	2,017	5,245	182	132	102	2,723	105	1,000	15	3,594	1,355	882	822	1,790	453	1,319	688	2,326
01-Aug	31	261	5,888	1,359	21,147	7,962	9,492	728	3,009	291	5,248	376	3,873	258	8,164	4,446	1,998	4,625	6,636	1,321	4,788	4,722	5,884
08-Aug	32	3,215	15,089	6,021	26,235	16,794	14,029	1,603	8,639	698	18,875	860	7,475	1,314	14,786	9,055	3,878	8,283	16,128	3,426	8,167	7,568	11,279
15-Aug	33	7,135	22,620	8,540	29,255	30,750	16,161	2,053	14,380	1,081	31,635	2,957	8,607	3,614	19,857	11,025	5,016	10,622	23,204	5,416	13,444		15,785
22-Aug	34	8,661	26,897	12,820	31,384	33,765	17,261	2,563	16,122	1,441	36,023	3,950	8,906	5,857	22,482	15,508	5,980	12,052	27,269	6,971	15,037		18,378
29-Aug	35	9,194	29,166	13,227	33,118	35,277	19,371	2,738	17,213	1,683	40,419	4,336	9,505	6,937	24,033	20,110	6,361	12,726	33,400	7,532	17,773		20,691
05-Sep	36	10,090	35,803	15,415	33,560	35,538	19,676	2,817	17,495	1,919	41,769	4,447	10,443	7,444	24,617	23,090	6,457	13,102	37,238	7,695	19,080		22,299
12-Sep	37	10,173	42,315	15,893	33,560	35,605	19,762	2,817	17,655	1,932	42,120	4,598	10,449	7,682	24,797	23,997	6,476	13,197	37,748	7,717	19,228		23,138
19-Sep	38	10,194	42,508	15,893	33,560	35,605	19,781	2,817	17,662	1,932	42,120	4,610	10,637	7,694	24,801	24,038	6,476	13,197	37,748	7,718	19,230		23,253
Grand Total		10,194	42,508	15,893	33,560	35,605	19,781	2,817	17,662	1,932	42,120	4,610	10,637	7,694	24,801	24,038	6,476	13,197	37,748	7,718	19,230	8,241	23,280

Chum (all FWs)																							
Week Ending (Sat)	Stat wk	2000	2001	2002	2003	2004	2005	2006	2007	2008	2009	2010	2011	2012	2013	2014	2015	2016	2017	2018	2019	2020	00-19 Cum Mean
06-Jun	23	-	-	-	-	-	-	-	-	-	-	-	-	-	-	-	-	-	-	-	-	0	
13-Jun	24	-	-	-	-	-	-	-	-	-	-	-	-	-	-	-	-	-	-	-	-	0	0
20-Jun	25	-	-	-	-	-	-	-	-	-	-	-	-	-	-	-	-	-	-	-	-	0	0
27-Jun	26	-	-	-	-	-	-	-	-	-	-	-	-	-	-	-	-	-	-	-	-	0	0
04-Jul	27	-	-	2	-	-	-	1	-	-	1	2	-	1	1	-	3	-	-	4	-	1	1
11-Jul	28	-	-	5	1	-	-	1	-	1	1	2	2	1	3	2	3	-	1	4	-	3	1
18-Jul	29	1	3	6	4	1	1	2	-	9	1	4	5	1	3	2	5	-	2	4	2	3	3
25-Jul	30	2	6	8	18	8	13	5	-	15	8	12	12	3	5	8	5	2	5	11	4	3	8
01-Aug	31	3	14	13	42	17	32	12	13	21	11	21	27	7	9	13	12	27	16	13	7	7	17
08-Aug	32	17	26	16	75	40	70	34	32	24	16	27	54	13	11	22	24	48	27	19	9	8	30
15-Aug	33	35	52	20	93	95	76	49	72	28	36	41	69	23	15	30	32	93	32	28	22		47
22-Aug	34	63	77	34	109	112	81	89	81	31	50	55	77	38	20	41	60	117	37	42	25		62
29-Aug	35	70	92	35	157	189	121	117	101	37	77	66	98	70	38	58	103	146	41	54	37		85
05-Sep	36	178	115	45	175	230	138	139	115	52	97	70	144	96	49	76	130	184	61	77	125		115
12-Sep	37	219	157	54	175	242	142	139	126	52	108	73	144	103	52	83	141	228	68	82	166		128
19-Sep	38	240	162	54	175	242	144	139	132	52	108	75	156	106	52	83	141	228	68	87	166		131
Grand Total		240	162	54	175	242	144	139	132	52	108	75	156	106	52	83	141	228	68	87	166	8	131

Nass Fishwheel Catches 2020 - GW only (May 31 - Aug 9)



Chinook (GW wheels only)																								
Week Ending (Sat)	Stat wk	2000	2001	2002	2003	2004	2005	2006	2007	2008	2009	2010	2011	2012	2013	2014	2015	2016	2017	2018	2019	2020	94-19 Cum Mean	
06-Jun	23	-	-	-	-	-	1	-	-	1	-	8	-	9	4	9	6	5	6	6	22	8		
13-Jun	24	3	163	-	-	6	28	10	-	29	-	25	22	18	21	65	55	58	12	12	60	17		
20-Jun	25	272	428	-	455	271	198	23	3	94	56	83	75	66	50	133	283	112	51	39	108	38		
27-Jun	26	1,205	1,283	697	1,405	275	689	829	318	250	733	246	203	70	90	195	824	234	83	118	400	55		
04-Jul	27	1,416	3,354	1,458	1,510	660	856	1,464	971	382	1,115	281	401	707	485	296	1,263	347	105	230	460	179		
11-Jul	28	1,563	4,097	1,676	1,710	869	1,006	1,565	1,880	787	1,184	298	450	989	568	351	1,345	405	135	255	592	610		
18-Jul	29	1,859	4,375	1,704	1,771	987	1,058	1,733	1,889	877	1,224	306	488	1,030	580	378	1,410	419	157	274	682	697		
25-Jul	30	1,892	4,409	1,723	1,833	1,013	1,084	1,753	2,073	887	1,252	312	508	1,239	589	392	1,427	426	169	295	705	744		
01-Aug	31	1,908	4,478	1,735	1,861	1,032	1,095	1,767	2,148	898	1,268	319	516	1,310	594	403	1,450	442	179	301	719	800		
08-Aug	32	1,961	4,500	1,743	1,877	1,050	1,108	1,784	2,156	907	1,295	323	523	1,330	597	420	1,459	458	196	316	723	811		
15-Aug	33	1,991	4,520	1,749	1,888	1,081	1,114	1,797	2,171	913	1,308	330	526	1,353	601	425	1,469	470	205	323	734	1,309		
22-Aug	34	2,001	4,525	1,757	1,891	1,095	1,121	1,812	2,182	919	1,316	332	527	1,363	605	431	1,483	474	210	329	739	1,317		
29-Aug	35	2,004	4,529	1,757	1,896	1,102	1,145	1,817	2,190	932	1,326	333	532	1,367	608	440	1,505	479	220	332	754	1,324		
05-Sep	36	2,007	4,530	1,763	1,899	1,103	1,151	1,821	2,196	940	1,327	335	542	1,368	611	442	1,510	480	226	336	776	1,328		
12-Sep	37	2,007	4,531	1,764	1,899	1,103	1,157	1,821	2,201	940	1,329	338	542	1,368	612	446	1,510	483	226	338	779	1,328		
19-Sep	38	-	-	-	-	-	-	-	-	-	-	-	-	-	-	-	-	-	-	-	780	1,328		
Grand Total		2007	4531	1764	1899	1103	1157	1821	2201	940	1329	338	542	1368	612	446	1510	483	226	338	780	811		

Sockeye (GW wheels only)																								
Week Ending (Sat)	Stat wk	2000	2001	2002	2003	2004	2005	2006	2007	2008	2009	2010	2011	2012	2013	2014	2015	2016	2017	2018	2019	2020	94-19 Cum Mean	
06-Jun	23	-	-	-	-	-	-	-	-	7	5	9	1	179	23	33	12	10	7	2	8	2		
13-Jun	24	4	120	-	-	46	42	18	-	78	5	32	65	424	265	466	162	71	17	11	79	15		
20-Jun	25	426	428	-	1,471	745	562	113	52	467	511	248	517	922	947	1,685	1,295	162	192	134	636	26		
27-Jun	26	2,889	1,421	4,186	3,311	995	2,108	1,099	1,234	1,977	3,274	1,462	1,799	1,382	4,503	3,300	3,489	767	665	802	2,251	89		
04-Jul	27	9,254	2,995	10,908	5,015	3,330	4,224	3,496	3,431	3,862	4,937	2,157	3,369	9,005	10,221	4,582	5,589	1,480	1,570	2,154	3,663	812		
11-Jul	28	11,409	4,608	15,326	7,362	7,931	6,205	5,743	5,225	8,298	6,486	3,402	4,065	10,449	10,974	5,498	7,952	2,266	2,813	2,974	5,218	4,029		
18-Jul	29	12,775	7,277	17,181	9,904	10,642	8,180	7,631	5,716	10,157	8,031	4,197	6,893	12,640	11,514	6,593	9,505	3,251	3,581	3,637	6,628	5,517		
25-Jul	30	13,729	9,186	20,146	12,566	12,656	10,020	9,524	9,045	11,375	9,305	4,941	9,838	18,090	12,406	7,748	11,692	4,905	4,249	4,807	7,303	7,583		
01-Aug	31	14,666	12,247	22,636	15,044	13,859	11,079	11,533	11,626	12,244	11,347	5,723	11,402	21,231	12,751	8,634	15,149	6,260	5,299	6,153	7,994	10,160		
08-Aug	32	16,829	13,225	23,600	16,527	15,505	11,746	13,148	13,091	12,767	14,129	6,411	12,006	23,002	12,974	9,463	17,316	7,653	6,486	7,739	8,605	12,115		
15-Aug	33	17,431	13,591	24,206	17,378	16,963	12,487	14,245	13,722	13,261	14,876	6,793	12,323	23,862	13,148	10,270	19,192	8,976	7,528	8,661	9,526	13,740		
22-Aug	34	17,553	13,734	24,745	17,720	17,780	13,071	15,536	14,025	13,701	15,155	7,008	12,438	24,142	13,208	10,766	20,747	9,714	8,161	9,215	9,880	14,246		
29-Aug	35	17,629	13,829	24,947	17,822	18,039	14,045	16,023	14,174	13,881	15,333	7,077	12,881	24,210	13,284	11,192	22,422	10,360	8,859	9,580	11,504	14,649		
05-Sep	36	17,764	13,910	25,323	17,860	18,131	14,502	16,451	14,265	13,963	15,449	7,116	13,361	24,227	13,303	11,439	23,158	10,986	9,500	9,937	12,365	14,984		
12-Sep	37	17,824	13,933	25,362	17,860	18,176	14,760	16,451	14,320	13,964	15,563	7,155	13,367	24,236	13,312	11,613	23,519	11,181	9,693	10,066	12,576	14,984		
19-Sep	38	-	-	-	-	-	-	-	-	-	-	-	-	-	-	-	-	-	-	-	12,588	14,984		
Grand Total		17,824	13,933	25,362	17,860	18,176	14,760	16,451	14,320	13,964	15,563	7,155	13,367	24,236	13,312	11,613	23,519	11,181	9,693	10,066	12,588	12,115		

Steelhead (GW wheels only)																								
Week Ending (Sat)	Stat wk	2000	2001	2002	2003	2004	2005	2006	2007	2008	2009	2010	2011	2012	2013	2014	2015	2016	2017	2018	2019	2020	94-19 Cum Mean	
06-Jun	23	-	-	-	-	-	1	-	-	-	-	-	-	2	1	3	2	1	1	-	9	2		
13-Jun	24	-	6	-	-	1	2	2	-	4	-	-	-	7	5	7	9	1	1	-	12	2		
20-Jun	25	1	8	-	-	2	4	2	-	4	7	-	2	7	6	8	14	3	5	-	12	2		
27-Jun	26	1	8	-	-	2	5	4	2	4	10	-	6	7	6	10	14	3	5	-	12	2		
04-Jul	27	1	8	-	-	2	5	4	2	4	10	-	6	10	6	10	14	3	5	1	12	2		
11-Jul	28	2	8	-	-	2	5	4	5	4	10	-	6	11	6	11	15	8	5	3	12	3		
18-Jul	29	6	10	1	-	2	7	5	6	6	10	-	6	11	6	17	23	8	5	10	15	3		
25-Jul	30	11	11	4	7	6	12	7	6	16	12	-	9	15	11	38	25	16	9	49	16	7		
01-Aug	31	25	24	31	36	27	19	12	9	42	23	4	16	28	22	67	41	99	21	89	25	24		
08-Aug	32	111	64	61	72	64	31	31	22	74	78	14	25	85	25	154	80	212	55	180	34	43		
15-Aug	33	216	141	76	131	138	44	49	48	88	187	74	39	225	39	199	109	274	93	272	55	111		
22-Aug	34	263	208	137	175	182	53	88	78	152	288	119	50	372	53	297	189	333	130	390	63	164		
29-Aug	35	286	265	157	224	218	106	122	105	223	380	180	87	462	85	483	277	369	192	432	106	219		
05-Sep	36	394	359	261	249	236	142	147	143	290	486	202	199	553	115	547	327	418	277	466	262	275		
12-Sep	37	422	412	296	249	241	154	147	161	293	514	268	201	606	134	617	369	452	316	491	311	321		
19-Sep	38	-	-	-	-	-	-	-	-	-	-	-	-	-	-	-	-	-	-	-	316	321		
Grand Total		422	412	296	249	241	154	147	161	293	514	268	201	606	134	617	369	452	316	491	316	43		

Coho (GW wheels only)																							94-19	Mean
Week Ending (Sat)	Stat wk	2000	2001	2002	2003	2004	2005	2006	2007	2008	2009	2010	2011	2012	2013	2014	2015	2016	2017	2018	2019	2020	Cum	
06-Jun	23	-	-	-	-	-	-	-	-	-	-	-	-	-	-	-	-	-	-	-	-	0	0	
13-Jun	24	-	-	-	-	-	-	-	-	-	-	-	-	-	-	-	-	-	-	-	-	0	0	
20-Jun	25	-	-	-	-	-	-	-	-	-	-	-	-	-	-	-	-	-	-	-	1	0	0	
27-Jun	26	-	-	-	-	-	-	-	-	-	-	-	-	-	-	-	-	-	-	-	1	0	0	
04-Jul	27	-	-	-	-	-	-	-	-	-	-	-	-	-	-	-	-	-	-	-	1	0	0	
11-Jul	28	-	-	-	-	-	1	-	-	-	-	-	-	-	1	-	-	2	1	-	1	0	0	
18-Jul	29	1	-	2	6	10	6	12	-	6	7	6	7	2	30	2	10	19	11	1	2	1	6	
25-Jul	30	9	3	27	76	101	71	78	27	81	75	45	46	30	177	91	44	125	116	19	45	22	51	
01-Aug	31	83	150	171	256	428	219	408	153	315	400	314	186	215	537	514	160	436	554	133	244	244	250	
08-Aug	32	1,206	790	540	690	1,049	495	1,179	415	1,162	1,797	1,207	487	1,124	1,441	1,799	461	1,164	1,728	437	697	613	847	
15-Aug	33	1,750	2,683	1,281	1,304	2,197	1,355	2,267	906	2,172	2,637	2,289	669	2,987	2,387	2,731	793	2,177	2,704	845	1,355		1,687	
22-Aug	34	1,981	3,715	2,435	1,908	3,169	2,362	3,311	1,344	3,517	3,900	3,099	841	4,068	3,111	4,544	1,216	3,250	3,434	1,150	1,707		2,465	
29-Aug	35	2,297	4,322	3,018	2,283	3,516	3,914	3,581	1,673	4,525	5,254	3,342	1,351	4,629	3,781	5,373	1,609	3,860	4,435	1,348	3,571		3,087	
05-Sep	36	2,703	5,198	4,930	2,445	3,668	4,653	3,798	1,930	5,132	6,068	3,456	1,877	5,042	4,105	5,996	1,887	4,293	5,337	1,466	4,148		3,651	
12-Sep	37	2,790	5,495	5,067	2,445	3,726	5,004	3,798	2,167	5,150	6,348	3,705	1,898	5,311	4,350	6,608	1,958	4,456	5,572	1,513	4,349		3,865	
19-Sep	38	-	-	-	-	-	-	-	-	-	-	-	-	-	-	-	-	-	-	-	4,363		3,865	
Grand Total		2790	5495	5067	2445	3726	5004	3798	2167	5150	6348	3705	1898	5311	4350	6608	1958	4456	5572	1513	4363	613	3,865	

Pinks (GW wheels only)																							MEAN ODD YR (95-17)
Week Ending (Sat)	Stat wk	2000	2001	2002	2003	2004	2005	2006	2007	2008	2009	2010	2011	2012	2013	2014	2015	2016	2017	2018	2019	2020	
06-Jun	23	-	-	-	-	-	-	-	-	-	-	-	-	-	-	-	-	-	-	-	-	0	-
13-Jun	24	-	-	-	-	-	-	-	-	-	-	-	-	-	-	-	-	-	-	-	-	0	-
20-Jun	25	-	-	-	-	-	-	-	-	-	-	-	-	-	-	-	-	-	-	-	-	0	-
27-Jun	26	-	-	-	-	-	-	-	-	-	-	-	-	-	-	-	-	-	-	-	-	0	-
04-Jul	27	-	1	-	4	4	13	1	-	-	5	-	-	-	6	-	26	-	1	-	11	2	5
11-Jul	28	-	12	3	137	30	57	5	1	1	16	-	-	-	108	4	104	31	20	5	42	1	43
18-Jul	29	32	69	41	2,063	270	1,027	40	1	34	141	2	9	-	382	68	403	135	134	44	342	30	389
25-Jul	30	126	196	162	8,725	1,680	3,792	164	120	86	1,785	3	74	14	2,701	1,054	646	724	1,494	329	1,062	583	1,711
01-Aug	31	223	4,850	1,021	15,030	6,052	5,399	657	2,290	243	3,779	25	622	190	5,343	2,986	1,428	2,895	5,350	1,042	3,798	3,337	4,044
08-Aug	32	2,761	10,338	2,570	17,939	9,858	6,611	1,271	5,013	516	9,318	98	1,256	895	9,007	5,790	2,631	4,505	11,767	2,572	5,735	5,040	6,824
15-Aug	33	5,296	14,355	3,913	19,893	13,972	7,586	1,492	7,151	816	12,591	673	1,376	2,093	11,726	6,751	3,159	5,751	15,431	3,631	7,686		9,023
22-Aug	34	5,792	16,464	5,987	21,300	15,610	8,311	1,821	7,811	1,054	13,997	980	1,415	3,200	13,079	10,299	3,749	6,679	16,859	4,509	8,115		10,342
29-Aug	35	6,009	17,972	6,190	22,405	16,240	9,190	1,912	8,211	1,209	15,308	1,059	1,477	3,735	14,062	13,961	4,029	7,153	18,660	4,826	9,029		11,453
05-Sep	36	6,535	22,231	8,329	22,783	16,376	9,389	1,961	8,336	1,345	15,799	1,087	1,559	4,020	14,449	16,472	4,098	7,487	20,669	4,953	9,441		12,366
12-Sep	37	6,592	26,539	8,705	22,783	16,415	9,475	1,961	8,437	1,357	15,987	1,115	1,559	4,147	14,599	17,318	4,112	7,576	21,032	4,972	9,519		12,897
19-Sep	38	-	-	-	-	-	-	-	-	-	-	-	-	-	-	-	-	-	-	-	9,521		12,897
Grand Total		6,592	26,539	8,705	22,783	16,415	9,475	1,961	8,437	1,357	15,987	1,115	1,559	4,147	14,599	17,318	4,112	7,576	21,032	4,972	9,521	5,040	12,897

Chum (GW wheels only)																							94-19	Mean
Week Ending (Sat)	Stat wk	2000	2001	2002	2003	2004	2005	2006	2007	2008	2009	2010	2011	2012	2013	2014	2015	2016	2017	2018	2019	2020	Cum	
06-Jun	23	-	-	-	-	-	-	-	-	-	-	-	-	-	-	-	-	-	-	-	-	0	0	
13-Jun	24	-	-	-	-	-	-	-	-	-	-	-	-	-	-	-	-	-	-	-	-	0	0	
20-Jun	25	-	-	-	-	-	-	-	-	-	-	-	-	-	-	-	-	-	-	-	-	0	1	
27-Jun	26	-	-	-	-	-	-	-	-	-	-	-	-	-	-	-	1	-	-	3	-	1	1	
04-Jul	27	-	-	-	-	-	-	-	-	-	-	-	-	1	1	-	2	-	-	4	-	3	1	
11-Jul	28	-	-	1	-	-	-	-	-	1	-	-	1	1	2	-	2	-	-	4	-	3	1	
18-Jul	29	1	2	1	1	-	1	-	-	7	-	-	2	1	2	-	4	-	-	4	2	3	2	
25-Jul	30	2	5	3	12	7	8	1	-	10	4	-	4	3	3	4	4	2	2	9	4	5	5	
01-Aug	31	3	8	7	25	11	13	6	5	15	6	1	8	7	4	9	8	22	8	11	7	5	10	
08-Aug	32	17	16	9	42	25	25	20	11	18	11	4	10	12	4	16	16	38	15	16	8	5	19	
15-Aug	33	29	29	13	52	59	26	31	18	19	23	10	14	18	8	21	23	55	18	24	14		30	
22-Aug	34	46	45	22	62	74	27	47	21	22	28	14	16	26	12	31	50	77	21	32	16		45	
29-Aug	35	51	57	22	87	114	48	55	31	26	45	17	19	40	24	46	85	99	23	36	27		61	
05-Sep	36	142	77	32	99	140	62	69	36	38	53	18	22	53	31	57	107	135	36	57	97		84	
12-Sep	37	166	111	38	99	145	66	69	45	38	59	18	22	58	34	64	118	179	41	61	131		96	
19-Sep	38	-	-	-	-	-	-	-	-	-	-	-	-	-	-	-	-	-	-	-	131		96	
Grand Total		166	111	38	99	145	66	69	45	38	59	18	22	58	34	64	118	179	41	61	131	5	96	

In-season Nass Sockeye Escapement Estimates to Gitwinksihlkw - 2020 Nass River Fishwheels [Best estimates are bolded]

Table with columns: Date, Gitwinksihlkw (GW) Test Fishery Catch (Daily, Daily, Adj., Cum.), Fishwheel Tags (Daily, Daily, Cum., Prop.), Grease Harbour (FW3, 4, 5, 6, IS Fishery) (Catch, Cum., IS, Raw, Cum., Adj., Exp.), In-season Cum. Esc. at GW based on: (Historical catchability (q), Mean (94-19), Low q, Daily Water Level, Mark rec., In-season Cum. Estimate, Daily Esc.).

In-season Nass Sockeye Escapement Estimates to Gitwinksihlkw - 2020 Nass River Fishwheels [Best estimates are bolded]

Date	Gitwinksihlkw (GW) Test Fishery Catch ^{1,2}				Fishwheel Tags				Grease Harbour (FW3, 4, 5, 6, IS Fishery) ^{1,2}						In-season Cum. Esc. at GW based on:					In-season Cum. Estimate ⁵	Daily Esc.				
	Daily		Adj.	Cum.	Daily	Daily	Cum.	Prop.	Catch	Cum.	IS	Raw	Cum.	Adj.	Exp.	Historical catchability (q) ³			Daily Water			Mark rec.			
	FW1	FW2	Total	catch	catch	FW1	FW2	Total	Tag	Tag (incl. rcps)	catch	catch	Recaps	recaps	Recaps	Factor	Mean (94-19)					Level ⁴	(-10% TL)		
																	High q	Low q							
																	11.8%	4.5%	2.2%	4.6%	5.4%				
24-Jul-20	180	226	406	406	7113	65	110	175	4291	43%	695	12413			15	322	29	20.2	56,695	135,243	261,246	136,822	127,696	127,696	7,253
25-Jul-20	199	290	489	489	7602	100	164	264	4555	54%	640	13053			14	336	32	19.1	60,995	147,631	286,711	149,210	137,118	137,118	9,422
26-Jul-20	219	263	482	482	8084	119	129	248	4803	51%	682	13735			21	357	43	17.5	65,233	159,841	311,812	161,420	146,805	146,805	9,687
27-Jul-20	149	256	405	405	8489	75	111	186	4989	46%	875	14610			23	380	51	16.4	68,794	170,101	332,902	171,680	155,151	155,151	8,346
28-Jul-20	90	231	321	321	8810	72	140	212	5201	66%	663	15273			12	392	30	16.1	71,617	178,233	349,618	179,812	161,145	161,145	5,994
29-Jul-20	160	205	365	365	9175	88	105	193	5394	53%	756	16029			10	402	22	17.9	74,826	187,479	368,626	189,058	168,527	168,527	7,382
30-Jul-20	191	278	469	469	9644	107	140	247	5641	53%	1236	17265			29	431	57	19.3	78,950	199,360	393,049	200,939	180,322	180,322	11,795
31-Jul-20	148	268	416	416	10060	52	84	136	5777	33%	653	17918			18	449	35	20.1	82,608	209,899	414,713	211,477	189,679	189,679	9,357
1-Aug-20	69	50	119	178	10238	54	46	100	5877	84%	524	18442			11	460	21	20.6	84,174	214,410	423,987	215,989	194,129	194,129	4,451
2-Aug-20	39	26	65	65	10303	35	24	59	5936	91%	249	18691			7	467	13	18.7	84,746	216,057	427,372	216,561	195,796	195,796	1,667
3-Aug-20	79	248	327	327	10630	67	135	202	6138	62%	390	19081			7	474	11	20.2	87,621	224,341	444,401	224,844	202,068	202,068	6,272
4-Aug-20	176	229	405	405	11035	111	140	251	6389	62%	477	19558			9	483	13	25.1	91,498	235,418	467,973	235,922	209,138	209,138	7,070
5-Aug-20	82	164	246	246	11281	51	78	129	6518	52%	344	19902			13	496	20	22.5	93,853	242,146	482,291	242,650	213,155	213,155	4,017
6-Aug-20	100	168	268	268	11549	64	109	173	6691	65%	158	20060			2	498	4	25.0	96,419	249,476	497,889	245,216	217,530	217,530	4,376
7-Aug-20	111	207	318	318	11867	79	119	198	6889	62%	336	20396			5	503	8	25.6	99,463	258,174	516,398	253,913	222,723	222,723	5,192
8-Aug-20	91	235	326	326	12193	55	115	170	7059	52%	506	20902			17	520	30	19.2	102,838	267,749	537,370	263,488	228,046	228,046	5,323
9-Aug-20	112	191	303	303	12496	48	47	95	7154	31%	404	21306			14	534	30	17.5	105,975	276,648	556,862	272,387	232,993	232,993	4,947
Total	4179	8239	12418	12496		2596	4558	7154		58%	21306			0	534				105,975	276,648	556,862	272,387	232,993		232,993

¹ The GW fishwheels started on 31 May (FW1 and FW2). Three GH fishwheels started on 6 June (FW3, FW5, and FW6).

² Shaded dates indicate periods of non-operation (portion or whole day) of fishwheels due to high water levels or other factors. When fish passage is anticipated, adjustment to catch is estimated.

³ See below for exp. factors (EF) used (non-bolded are transition interpolation between periods) based on period catchability results from 1994-2019.

⁴ Daily water level estimates are using daily expansion factors (H, L or Avg.) adjusted for water levels experienced each day.

⁵ The in-season estimate is based on historic expansion factors adjusted by daily water levels until 15 or more recaps are captured at the GH fishwheels and weekly mark rates are finalized from catch and tag recoveries to generate a mark-recapture estimate.

Period	Avg.	Low	Low (98)	High	%Avg	%Low	%High	1998
1-27 June	21.9	32.3	33.5	11.4	4.6%	3.1%	8.8%	3.0%
28-30 Jun	19.0	31.4	33.5	9.4	5.3%	3.2%	10.6%	3.0%
1 July-14 July	16.2	30.4	33.4	7.5	6.2%	3.3%	13.4%	3.0%
15 July	20.8	41.2	64.5	8.1	4.8%	2.4%	12.3%	1.6%
16-31 July; 1-3 Ag	25.3	52.1	95.6	8.8	3.9%	1.9%	11.4%	1.0%
4-7 Aug	27.4	58.2	88.3	9.6	3.7%	1.7%	10.4%	1.1%
8-14 Aug	29.4	64.3	81.0	10.4	3.4%	1.6%	9.7%	1.2%
15 August	26.7	56.4	62.1	11.4	3.7%	1.8%	8.8%	1.6%
16-31 Aug; Sep	24.0	48.5	43.3	12.4	4.2%	2.1%	8.1%	2.3%

PLEASE NOTE THAT THE MARK RECAPTURE ESTIMATES ARE CONSIDERED FINAL TO: **04-Aug** VARIABLE FROM (SHADED): **05-Aug** TO **9-Aug**

In-season Chinook Escapement Estimates to Gitwinksihlkw - 2020 Nass River Fishwheels [Best Estimates are Bolded]

Date ²	Gitwinksihlkw catch					Grease Harbour catch					All Wheels		Tags Applied						Cumulative Escapement using (FW1 & FW2):					In-season Daily Estimate ⁸ Esc.												
	Test Fishery catch		Upstream fishwheels			Upstream fishwheels		Upstream fishwheels			Catch ¹		All Wheels					Daily %		Hist. catch index est. 94-19																
	FW1	FW2	Total	Adj	Cum.	FW3	FW5	FW6	Total	Cum.	Total	Cum.	FW1	FW2	FW3	FW5	FW6	Total	Cum.	tagged	High q ³	Mean ⁴	Low q ⁵		WL ⁶	SO MR ⁷										
																					13.1%	6.7%	2.1%		6.6%	6.5%										
31-May-20	0	0	0	0	0	0	0	0	0	0	0	0	0	0	0	0	0	0	0	0%	0	0	0	0	0	0	0	0	0	0	0	0	0	0		
01-Jun-20	0	0	0	0	0	0	0	0	0	0	0	0	0	0	0	0	0	0	0	0%	0	0	0	0	0	0	0	0	0	0	0	0	0	0	0	
02-Jun-20	1	0	1	1	1	0	0	0	0	0	1	1	0	1	0	0	0	1	1	100%	8	15	48	48				48				48		48		
03-Jun-20	0	2	2	2	3	0	0	0	0	0	2	3	0	2	0	0	0	2	3	100%	23	44	144	144				144				144		144		96
04-Jun-20	0	1	1	1	4	0	0	0	0	0	1	4	0	0	0	0	0	0	3	0%	31	59	192	192				192				192		48		
05-Jun-20	0	2	2	2	6	0	0	0	0	0	2	6	0	2	0	0	0	2	5	100%	46	89	288	288				288				288		96		
06-Jun-20	0	2	2	2	8	0	0	0	0	0	2	8	0	2	0	0	0	2	7	100%	61	119	384	384				384				384		96		
07-Jun-20	0	0	0	0	8	1	1	1	3	3	3	11	0	0	0	1	0	1	8	33%	61	119	384	384				384				384		0		
08-Jun-20	0	2	2	2	10	0	0	0	0	3	2	13	0	2	0	0	0	2	10	100%	77	148	481	414				414				414		30		
09-Jun-20	0	0	0	0	10	0	0	0	0	3	0	13	0	0	0	0	0	0	10	0%	77	148	481	414				414				414		0		
10-Jun-20	0	1	1	1	11	1	0	1	2	5	3	16	0	1	1	0	1	3	13	100%	84	163	529	462				462				462		48		
11-Jun-20	0	0	0	0	11	0	0	0	0	5	0	16	0	0	0	0	0	0	13	0%	84	163	529	462				462				462		0		
12-Jun-20	0	1	1	1	12	0	0	0	0	5	1	17	0	1	0	0	0	1	14	100%	92	178	577	510				510				510		48		
13-Jun-20	2	3	5	5	17	0	0	2	2	7	7	24	2	3	0	0	2	7	21	100%	130	252	817	584				584				584		74		
14-Jun-20	0	0	0	0	17	0	0	1	1	8	1	25	0	0	0	0	1	1	22	100%	130	252	817	584				584				584		0		
15-Jun-20	3	4	7	7	24	0	2	2	4	12	11	36	3	4	0	2	2	11	33	100%	184	356	1,153	688				688				688		104		
16-Jun-20	1	1	2	2	26	0	0	0	0	12	2	38	1	1	0	0	0	2	35	100%	199	385	1,249	718				718				718		30		
17-Jun-20	0	0	0	0	26	0	1	1	2	14	2	40	0	0	0	1	1	2	37	100%	199	385	1,249	718				718				718		0		
18-Jun-20	0	3	3	3	29	2	1	0	3	17	6	46	0	3	1	1	0	5	42	83%	222	430	1,393	762				762				762		44		
19-Jun-20	0	8	8	8	37	2	0	0	2	19	10	56	0	7	2	0	0	9	51	90%	283	548	1,778	823				823				823		61		
20-Jun-20	1	0	1	3	40	0	0	0	0	19	1	57	1	0	0	0	0	1	52	100%	306	593	1,922	846				846				846		23		
21-Jun-20	0	0	0	0	40	0	0	0	0	19	0	57	0	0	0	0	0	0	52	0%	306	593	1,922	846				846				846		0		
22-Jun-20	0	0	0	0	40	0	0	0	0	19	0	57	0	0	0	0	0	0	52	0%	306	593	1,922	846				846				846		0		
23-Jun-20	0	0	0	0	40	0	0	0	0	19	0	57	0	0	0	0	0	0	52	0%	306	593	1,922	846				846				846		0		
24-Jun-20	0	1	1	1	41	0	0	0	0	19	1	58	0	1	0	0	0	1	53	100%	314	608	1,970	861				861				861		15		
25-Jun-20	1	1	2	2	43	0	1	0	1	20	3	61	1	1	0	1	0	3	56	100%	329	637	2,066	891				891				891		30		
26-Jun-20	0	4	4	4	47	3	6	3	12	32	16	77	0	4	3	6	3	16	72	100%	360	697	2,258	950				950				950		59		
27-Jun-20	4	6	10	10	57	4	6	1	11	43	21	98	4	6	4	4	1	19	91	90%	437	845	2,739	1,431				1,431				1,431		481		
28-Jun-20	1	8	9	9	66	2	4	1	7	50	16	114	1	8	2	4	1	16	107	100%	505	978	3,171	1,564				1,564				1,564		133		
29-Jun-20	4	48	52	52	118	19	9	8	36	86	88	202	4	47	13	9	8	81	188	92%	904	1,749	5,670	2,335				2,335				2,335		771		
30-Jun-20	5	11	16	16	134	3	5	3	11	97	27	229	5	11	3	5	3	27	215	100%	1,026	1,986	6,439	2,572				2,572				2,572		237		
01-Jul-20	3	20	23	23	157	2	2	0	4	101	27	256	3	18	2	2	0	25	240	93%	1,202	2,327	7,544	2,913	2,913			2,913				2,913		341		
02-Jul-20	5	15	20	20	177	3	6	1	10	111	30	286	5	15	3	6	1	30	270	100%	1,356	2,624	8,505	3,066	3,136			3,136				3,136		222		
03-Jul-20	1	3	4	4	181	1	1	0	2	113	6	292	1	3	1	1	0	6	276	100%	1,386	2,683	8,697	3,097	3,223			3,223				3,223		87		
04-Jul-20	0	0	0	0	181	0	0	0	0	113	0	292	0	0	0	0	0	0	276	0%	1,386	2,683	8,697	3,097	3,223			3,223				3,223		0		
05-Jul-20	0	0	0	0	181	0	0	0	0	113	0	292	0	0	0	0	0	0	276	0%	1,386	2,683	8,697	3,097	3,223			3,223				3,223		0		
06-Jul-20	1	3	4	4	185	0	1	1	2	115	6	298	1	3	0	1	1	6	282	100%	1,417	2,742	8,889	3,128	3,256			3,256				3,256		33		
07-Jul-20	14	50	64	64	249	4	6	2	12	127	76	374	13	47	4	5	2	71	353	93%	1,907	3,691	11,964	4,076	3,732			3,732				3,732		476		
08-Jul-20	30	76	106	106	355	34	72	12	118	245	224	598	25	76	32	63	12	208	561	93%	2,719	5,263	17,058	5,648	4,544			4,544				4,544		812		
09-Jul-20	32	77	109	109	464	57	183	89	329	574	438	1036	27	73	55	171	85	411	972	94%	3,554	6,878	22,295	7,264	5,822			5,822				5,822		1,277		
10-Jul-20	7	95	102	102	566	75	156	137	368	942	470	1506	6	70	70	145	109	400	1372	85%	4,335	8,391	27,196	8,776	7,122			7,122				7,122		1,300		
11-Jul-20	7	39	46	46	612	51	60	43	154	1096	200	1706	7	37	44	55	36	179	1551	90%	4,687	9,072	29,407	9,458	7,699			7,699				7,699		577		
12-Jul-20	4	12	16	16	628	12	31	21	64	1160	80	1786	3	10	10	28	20	71	1622	89%	4,810	9,310	30,175	9,695	7,926			7,926				7,926		227		
13-Jul-20	7	18	25	25	653	45	46	38	129	1289	154	1940	7	18	38	38	35	136	1758	88%	5,001	9,680	31,377	10,065	8,850			8,850				8,850		924		
14-Jul-20	11	16	27	27	680	51	48	58	157	1446	184	2124	9	16	49	47	53	174	1932	95%	5,208	10,080	32,674	10,466	9,989			9,989				9,989		1,139		
15-Jul-20	0	13	13	13	693	11	11	30	52	1498	65	2189	0	12	11	10	26	59	1991	91%	5,308	10,273	33,299	10,658	10,431			10,431				10,431		442		

In-season Chinook Escapement Estimates to Gitwinksihlkw - 2020 Nass River Fishwheels [Best Estimates are Bolded]

Date ²	Gitwinksihlkw catch				Grease Harbour catch				All Wheels		Tags Applied				Cumulative Escapement using (FW1 & FW2):					In-season Estimate ⁸	Daily Esc.						
	Test Fishery catch		Upstream fishwheels		Catch ¹		All Wheels				Daily %		Hist. catch index est. 94-19														
	FW1	FW2	Total	Adj	Cum.	FW3	FW5	FW6	Total	Cum.	Total	Cum.	FW1	FW2	FW3	FW5	FW6	Total	Cum.			tagged	High q ³	Mean ⁴	Low q ⁵	WL ⁶	MR ⁷
																					13.1%	6.7%	2.1%	6.6%	6.5%		
16-Jul-20	0	4	4	4	697	0	4	6	10	1508	14	2203	0	4	0	3	6	13	2004	93%	5,338	10,332	33,491	10,689	10,569	10,569	138
17-Jul-20	0	0	0	0	697	0	2	2	4	1512	4	2207	0	0	0	2	2	4	2008	100%	5,338	10,332	33,491	10,689	10,569	10,569	0
18-Jul-20	0	2	2	2	699	1	1	2	4	1516	6	2213	0	2	1	1	2	6	2014	100%	5,354	10,362	33,587	10,704	10,606	10,606	37
19-Jul-20	0	5	5	5	704	5	2	3	10	1526	15	2228	0	5	5	2	3	15	2029	100%	5,392	10,436	33,827	10,743	10,691	10,691	85
20-Jul-20	1	5	6	6	710	19	10	4	33	1559	39	2267	1	5	17	8	3	34	2063	87%	5,438	10,525	34,116	10,788	10,785	10,785	93
21-Jul-20	0	5	5	5	715	5	7	2	14	1573	19	2286	0	5	3	7	2	17	2080	89%	5,476	10,599	34,356	10,827	10,853	10,853	69
22-Jul-20	2	3	5	5	720	6	4	0	10	1583	15	2301	2	3	6	2	0	13	2093	87%	5,514	10,673	34,596	10,865	10,916	10,916	63
23-Jul-20	2	6	8	8	728	36	38	27	101	1684	109	2410	2	5	35	37	27	106	2199	97%	5,576	10,792	34,981	10,984	11,014	11,014	98
24-Jul-20	4	6	10	10	738	30	12	22	64	1748	74	2484	4	4	30	10	19	67	2266	91%	5,652	10,940	35,461	11,132	11,156	11,156	141
25-Jul-20	5	3	8	8	746	24	14	17	55	1803	63	2547	4	2	23	14	14	57	2323	90%	5,714	11,059	35,845	11,250	11,282	11,282	126
26-Jul-20	3	13	16	16	762	13	11	14	38	1841	54	2601	2	11	11	11	11	46	2369	85%	5,836	11,296	36,614	11,488	11,551	11,551	269
27-Jul-20	0	6	6	6	768	8	8	12	28	1869	34	2635	0	6	5	8	11	30	2399	88%	5,882	11,385	36,903	11,577	11,656	11,656	105
28-Jul-20	0	3	3	3	771	1	1	1	3	1872	6	2641	0	3	1	1	1	6	2405	100%	5,905	11,429	37,047	11,621	11,701	11,701	45
29-Jul-20	0	1	1	1	772	5	4	0	9	1881	10	2651	0	1	3	4	0	8	2413	80%	5,913	11,444	37,095	11,636	11,718	11,718	17
30-Jul-20	1	10	11	11	783	12	5	11	28	1909	39	2690	1	8	9	3	8	29	2442	74%	5,997	11,607	37,623	11,799	11,985	11,985	266
31-Jul-20	2	17	19	19	802	5	2	2	9	1918	28	2718	1	15	4	1	1	22	2464	79%	6,143	11,889	38,536	12,081	12,366	12,366	381
01-Aug-20	0	0	0	0	802	4	1	2	7	1925	7	2725	0	0	3	1	0	4	2468	57%	6,143	11,889	38,536	12,081	12,366	12,366	0
02-Aug-20	0	0	0	0	802	0	0	0	0	1925	0	2725	0	0	0	0	0	0	2468	0%	6,143	11,889	38,536	12,081	12,366	12,366	0
03-Aug-20	0	1	1	1	803	0	0	2	2	1927	3	2728	0	1	0	0	0	1	2469	33%	6,150	11,904	38,584	12,095	12,382	12,382	16
04-Aug-20	0	1	1	1	804	0	1	0	1	1928	2	2730	0	1	0	1	0	2	2471	100%	6,158	11,919	38,632	12,110	12,395	12,395	14
05-Aug-20	0	4	4	4	808	1	0	2	3	1931	7	2737	0	4	1	0	1	6	2477	86%	6,188	11,978	38,825	12,170	12,445	12,445	50
06-Aug-20	1	0	1	1	809	0	0	0	0	1931	1	2738	1	0	0	0	0	1	2478	100%	6,196	11,993	38,873	12,177	12,458	12,458	12
07-Aug-20	0	1	1	1	810	2	0	0	2	1933	3	2741	0	1	1	0	0	2	2480	67%	6,204	12,008	38,921	12,185	12,470	12,470	12
08-Aug-20	0	3	3	3	813	0	0	4	4	1937	7	2748	0	2	0	0	4	6	2486	86%	6,227	12,052	39,065	12,229	12,508	12,508	37
09-Aug-20	1	2	3	3	816	0	0	1	1	1938	4	2752	1	2	0	0	1	4	2490	100%	6,250	12,097	39,209	12,274	12,545	12,545	37
Totals	167	647	814	816		560	786	592	1938		2752		148	595	506	722	519	2490		90%	6,250	12,097	39,209	12,274	12,545		12,545

¹ The GW fishwheels started on 31 May (FW1 and FW2). Three GH fishwheels started on 6 June (FW3, FW5, and FW6).
² Shaded dates indicate periods of non-operation (portion or whole day) of fishwheels due to high water levels or other factors. When fish passage is anticipated, adjustment to catch is estimated.
³ Low catch-index expansion estimates ("High q") based on high catchability/ideal water levels at FW1 and FW2 that were derived from 2001 expansion factor (7.66 or 13.06%).
⁴ Average catch-index expansion estimates based on mean catchability at FW1 and FW2 from 1994 to 2019 expansion factors (14.82 or 6.75%).
⁵ High catch-index estimates ("Low q") based on low catchability/water levels at FW1 and FW2 that were derived from expansion factors from 2010 (q: 60.90 or 1.6%).
⁶ Cumulative GW adj. catch is expanded by historical catch index factors based on daily water levels (WL) mark-recapture rates to estimate cumulative escapement to GW.
⁷ Cumulative GW adj. catch is expanded by historical catch index factors based on in-season sockeye mark-recapture rates (SO MR) to estimate cumulative escapement to GW.
⁸ In-season estimate is using an in-season sockeye catch rate method to estimate the cumulative Chinook run size passage in 2020.

In-season Coho Escapement Estimates to Gitwinksihlkw - 2020 Nass River Fishwheels [Best Estimates are Bolded]

Date ²	Gitwinksihlkw Test Fishery Catch ¹			Fishwheel Tags (GW only)			Grease Harbour (FW3-6 incl. recaps & IS fisher)					All Wheels		Est. cumulative escapement at GW											
	FW1	FW2	Total	Adj. catch	Cum	FW1	FW2	Total	Cum. tagged	Prop. tagged	FW Catch	Cum. catch	Raw GW recaps	Cum. GW recaps	Adj. GW recaps	Total	Cum.	Catch-index Est. Range (historical)				MR method			
																		High q (12) ³	Mean (94-19) ⁴	Low q (11) ⁵	Daily Water Level ⁶	SO MR	CO MR ⁷	Best Est.	Daily Esc.
14-Jul-20	1	0	1	1	1	1	0	1	1	100%	0	0	0	0	1	1	13	21	39	39	16	16	16		
15-Jul-20	0	0	0	0	1	0	0	0	1	0%	0	0	0	0	0	1	13	21	39	39	16	16	0		
16-Jul-20	0	0	0	0	1	0	0	0	1	0%	0	0	0	0	0	1	13	21	39	39	16	16	0		
17-Jul-20	0	0	0	0	1	0	0	0	1	0%	0	0	0	0	1	13	21	39	39	16	16	0			
18-Jul-20	0	0	0	0	1	0	0	0	1	0%	0	0	0	0	1	13	21	39	39	16	16	0			
19-Jul-20	1	1	2	2	3	1	1	2	3	100%	0	0	0	0	2	3	38	63	116	64	82	82	67		
20-Jul-20	0	0	0	0	3	0	0	0	3	0%	0	0	0	0	0	3	38	63	116	64	82	82	0		
21-Jul-20	0	0	0	0	3	0	0	0	3	0%	1	1	0	0	1	4	38	63	116	64	82	82	0		
22-Jul-20	0	3	3	3	6	0	3	3	6	100%	0	1	0	0	3	7	77	127	232	128	156	156	73		
23-Jul-20	0	2	2	2	8	0	2	2	8	100%	4	5	0	0	6	13	103	169	309	170	198	198	43		
24-Jul-20	3	1	4	4	12	3	1	4	12	100%	3	8	0	0	7	20	154	253	463	254	279	279	81		
25-Jul-20	7	3	10	10	22	7	3	10	22	100%	4	12	1	1	13	33	282	464	849	465	470	470	191		
26-Jul-20	13	4	17	17	39	11	3	14	36	82%	0	12	0	1	17	50	500	823	1,505	824	768	768	298		
27-Jul-20	2	8	10	10	49	1	8	9	45	90%	8	20	0	1	18	68	628	1,034	1,891	1,035	932	932	164		
28-Jul-20	5	12	17	17	66	5	12	17	62	100%	6	26	0	1	23	91	846	1,393	2,548	1,394	1,206	1,206	274		
29-Jul-20	11	11	22	22	88	10	11	21	83	95%	6	32	0	1	28	119	1,128	1,858	3,397	1,859	1,599	1,599	393		
30-Jul-20	63	18	81	81	169	56	15	71	154	88%	27	59	0	1	108	227	2,166	3,568	6,523	3,568	3,160	3,160	1,561		
31-Jul-20	29	18	47	47	216	25	14	39	193	83%	47	106	1	2	93	320	2,768	4,560	8,337	4,561	4,104	4,104	945		
01-Aug-20	27	1	28	45	261	24	1	25	218	56%	25	131	0	2	53	373	3,345	5,510	10,074	5,511	5,032	5,032	927		
02-Aug-20	12	2	14	14	275	12	2	14	232	100%	16	147	1	3	29	402	3,524	5,805	10,615	5,690	5,293	5,293	261		
03-Aug-20	21	25	46	46	321	20	20	40	272	87%	18	165	1	4	63	465	4,114	6,776	12,390	6,661	6,223	6,223	930		
04-Aug-20	33	35	68	68	389	31	32	63	335	93%	35	200	0	4	103	568	4,985	8,212	15,015	8,097	7,933	7,933	1,710		
05-Aug-20	21	24	45	45	434	19	21	40	375	89%	32	232	1	5	76	644	5,562	9,162	16,752	9,046	8,946	8,946	1,012		
06-Aug-20	11	21	32	32	466	10	17	27	402	84%	13	245	0	5	45	689	5,972	9,837	17,987	9,457	9,745	9,745	800		
07-Aug-20	28	26	54	54	520	24	18	42	444	78%	37	282	3	8	88	777	6,664	10,977	20,071	10,597	11,130	11,130	1,385		
08-Aug-20	47	63	110	110	630	38	45	83	527	75%	124	406	4	12	230	1007	8,074	13,299	24,317	12,919	13,240	13,240	2,110		
09-Aug-20	46	36	82	82	712	39	25	64	591	78%	78	484	4	16	156	1163	9,125	15,030	27,482	14,650	14,671	14,671	1,431		
Total	381	314	695	712		337	254	591		85%	484		16		1163								14,671		

¹ The GW fishwheels started on 31 May (FW1 and FW2). The GH fishwheels started on 6 June (FW3, FW5, and FW6).

² Shaded dates indicate periods of non-operation (portion or whole day) of fishwheels due to high water levels or other factors. When fish passage is anticipated, adjustment to catch is estimated.

³ Low catch-index estimates ("High q") based on high catchability/ideal water levels at FW1 and FW2 that were derived from 2012 expansion factor (12.82 or 7.80%).

⁴ Average catch-index estimates based on mean catchability at FW1 and FW2 from 1994 to 2019 expansion factors (21.11 or 4.74%).

⁵ High catch-index estimates ("Low q") based on low catchability/water levels at FW1 and FW2 that were derived from expansion factors from 2018 (q: 38.60 or 2.59%).

⁶ Daily water level method estimate is based on cumulative GW adj. catch expanded by historical catch index factors based on daily water levels to estimate cumulative escapement to GW.

⁷ In-season estimate is using daily expansion factors based on daily water levels until 12 or more coho recaps are captured at the GH fishwheels then estimates are based on mark recapture.

Catches of Steelhead - 2020 Nass River Fishwheels

In-season Run Size Estimates for Summer Run (SR) Steelhead

Date ²	Gitwinksihlkw Catch (SR=summer run) ¹					Grease Harbour Catch (SR=summer run) ¹					All Wheels catch (SR=summer run; All=includes catch before 1 July)			Adipose fin marked (SR)			Cum. escapement estimates using (FW1 & FW2):				Best Estimate			
	FW1	FW2	Total	Adj. catch	SR Cum	FW3	FW4	FW5	FW6	Total	SR Cum	SR Total	SR Cum	All Cum	Total	Cum marked	Daily % tagged	High q (04) ³	Mean 94-19 ⁴	Low q (97) ⁵	Daily Water Level ⁶	In-season SK/CO MR est ^{7,8}	Cum.	Daily
																		5.9%	2.7%	1.2%	2.3%	4.7%		
1-Jul-20	0	0	0	0	0	0	0	0	0	0	0	0	0	2	0	0	0%	0	0	0	0		0	0
2-Jul-20	0	0	0	0	0	0	0	0	0	0	0	0	0	2	0	0	0%	0	0	0	0		0	0
3-Jul-20	0	0	0	0	0	0	0	0	0	0	0	0	0	2	0	0	0%	0	0	0	0		0	0
4-Jul-20	0	0	0	0	0	0	0	0	0	0	0	0	0	2	0	0	0%	0	0	0	0		0	0
5-Jul-20	0	0	0	0	0	0	0	0	0	0	0	0	0	2	0	0	0%	0	0	0	0		0	0
6-Jul-20	0	0	0	0	0	0	0	0	0	0	0	0	0	2	0	0	0%	0	0	0	0		0	0
7-Jul-20	0	0	0	0	0	0	0	0	0	0	0	0	0	2	0	0	0%	0	0	0	0		0	0
8-Jul-20	0	0	0	0	0	0	0	0	0	0	0	0	0	2	0	0	0%	0	0	0	0		0	0
9-Jul-20	0	0	0	0	0	0	0	0	0	0	0	0	0	2	0	0	0%	0	0	0	0		0	0
10-Jul-20	0	0	0	0	0	0	0	0	0	0	0	0	0	2	0	0	0%	0	0	0	0		0	0
11-Jul-20	0	1	1	1	1	0	0	0	0	0	0	1	1	3	1	1	100%	20	44	98	44	12	12	12
12-Jul-20	0	0	0	0	1	0	0	0	0	0	0	0	1	3	0	1	0%	20	44	98	44	12	12	0
13-Jul-20	0	0	0	0	1	0	0	0	1	1	1	1	2	4	1	2	100%	20	44	98	44	12	12	0
14-Jul-20	0	0	0	0	1	0	0	0	0	0	1	0	2	4	0	2	0%	20	44	98	44	12	12	0
15-Jul-20	0	0	0	0	1	0	0	0	0	0	1	0	2	4	0	2	0%	20	44	98	44	12	12	0
16-Jul-20	0	0	0	0	1	0	0	0	0	0	1	0	2	4	0	2	0%	20	44	98	44	12	12	0
17-Jul-20	0	0	0	0	1	0	0	0	0	0	1	0	2	4	0	2	0%	20	44	98	44	12	12	0
18-Jul-20	0	0	0	0	1	0	0	0	0	0	1	0	2	4	0	2	0%	20	44	98	44	12	12	0
19-Jul-20	0	0	0	0	1	0	0	0	0	0	1	0	2	4	0	2	0%	20	44	98	44	12	12	0
20-Jul-20	0	0	0	0	1	0	0	0	0	0	1	0	2	4	0	2	0%	20	44	98	44	12	12	0
21-Jul-20	0	0	0	0	1	0	0	0	0	0	1	0	2	4	0	2	0%	20	44	98	44	12	12	0
22-Jul-20	0	0	0	0	1	0	0	0	0	0	1	0	2	4	0	2	0%	20	44	98	44	12	12	0
23-Jul-20	1	1	2	2	3	0	0	0	0	0	1	2	4	6	2	4	100%	60	131	295	131	54	54	43
24-Jul-20	1	0	1	1	4	0	0	0	1	1	2	2	6	8	1	5	50%	80	175	394	175	75	75	20
25-Jul-20	0	1	1	1	5	0	0	0	0	0	2	1	7	9	0	5	0%	100	219	492	219	94	94	19
26-Jul-20	0	0	0	0	5	0	0	0	0	0	2	0	7	9	0	5	0%	100	219	492	219	94	94	0
27-Jul-20	2	1	3	3	8	1	0	0	2	3	5	6	13	15	4	9	67%	161	350	787	350	143	143	49
28-Jul-20	1	1	2	2	10	0	0	0	1	1	6	3	16	18	1	10	33%	201	438	984	438	175	175	32
29-Jul-20	1	2	3	3	13	0	0	0	1	1	7	4	20	22	3	13	75%	261	569	1,279	569	229	229	54
30-Jul-20	1	4	5	5	18	0	0	0	0	0	7	5	25	27	5	18	100%	362	788	1,771	788	325	325	96
31-Jul-20	0	4	4	4	22	0	0	0	3	3	10	7	32	34	4	22	57%	442	963	2,164	963	405	405	80
1-Aug-20	0	0	0	2	24	2	0	0	4	6	16	6	38	40	2	24	33%	482	1,050	2,361	963	447	447	41
2-Aug-20	0	0	0	0	24	0	0	0	0	0	16	0	38	40	0	24	0%	482	1,050	2,361	963	447	447	0
3-Aug-20	0	3	3	3	27	0	0	0	0	0	16	3	41	43	3	27	100%	542	1,181	2,656	1,094	507	507	61
4-Aug-20	0	7	7	7	34	1	0	0	1	2	18	9	50	52	7	34	78%	683	1,488	3,345	1,400	683	683	176
5-Aug-20	1	3	4	4	38	0	0	2	1	3	21	7	57	59	6	40	86%	764	1,663	3,739	1,575	773	773	90
6-Aug-20	0	0	0	0	38	0	0	0	0	0	21	0	57	59	0	40	0%	764	1,663	3,739	1,575	773	773	0
7-Aug-20	0	1	1	1	39	0	0	0	0	0	21	1	58	60	1	41	100%	784	1,706	3,837	1,619	799	799	26
8-Aug-20	1	3	4	4	43	0	0	0	2	2	23	6	64	66	2	43	33%	864	1,882	4,231	1,794	876	876	77
9-Aug-20	0	2	2	2	45	1	0	0	2	3	26	5	69	71	3	46	60%	904	1,969	4,427	1,882	911	911	35
Total	9	34	43	45		5	0	2	19	26		69	71	46		67%								911

¹ The GW fishwheels started on 31 May (FW1 and FW2). The GH fishwheels started on 6 June (FW3, FW5, and FW6).

² Shaded dates indicate periods of non-operation (portion or whole day) of fishwheels due to high water levels or other factors. When fish passage is anticipated, adjustment to catch is estimated.

³ Low catch-index expansion estimates ("High q") based on high catchability/ideal water levels at FW1 and FW2 that were derived from the 2004 steelhead expansion factor (16.92 or 5.91%).

⁴ Average catch-index estimates based on mean catchability at FW1 and FW2 from 1994 to 2019 steelhead expansion factors (36.86 or 2.71%).

⁵ High catch-index expansion estimates ("Low q") based on low catchability/water levels at FW1 and FW2 that were derived from the 1995 steelhead expansion factor (82.87 or 1.21%).

⁶ Daily water level method estimate is based on cumulative GW adj. catch expanded by historical catch index factors based on daily water levels to estimate cumulative escapement to GW.

⁷ In-season estimate is using daily expansion factors based on daily water levels until 12 or more Coho recaps are captured at the GH fishwheels then estimates are based on mark recapture.

⁸ All estimates are multiplied by 1.19 which is the mean difference between fishwheel index and summer-run steelhead mark-recapture estimates.